

Product datasheet for **TA337040**

EDG8 (S1PR5) Rabbit Polyclonal Antibody

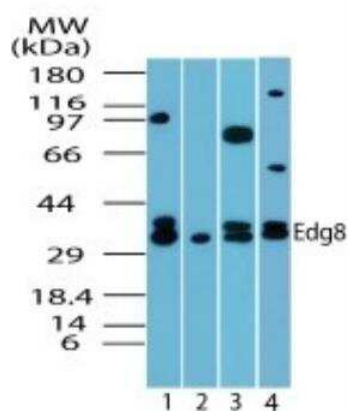
Product data:

Product Type:	Primary Antibodies
Applications:	IHC, WB
Recommended Dilution:	Immunohistochemistry, Immunohistochemistry-Paraffin: 5-10 ug/ml, Western Blot: 1-3 ug/ml
Reactivity:	Human, Mouse, Rat, Canine, Primate
Host:	Rabbit
Isotype:	IgG
Clonality:	Polyclonal
Immunogen:	A synthetic peptide corresponding to amino acids 15-55 of human Edg8 was used as the immunogen, GenBank no NP_110387.
Formulation:	PBS containing 0.05% BSA, 0.05% Sodium Azide. Store at 4C short term. Aliquot and store at -20C long term. Avoid freeze-thaw cycles.
Concentration:	lot specific
Purification:	Protein G purified
Conjugation:	Unconjugated
Storage:	Store at -20°C as received.
Stability:	Stable for 12 months from date of receipt.
Gene Name:	sphingosine-1-phosphate receptor 5
Database Link:	NP_110387 Entrez Gene 60399 Rat Entrez Gene 94226 Mouse Entrez Gene 53637 Human Q9H228
Synonyms:	Edg-8; EDG8; S1P5; SPPR-1; SPPR-2
Protein Families:	Druggable Genome, GPCR, Transmembrane
Protein Pathways:	Neuroactive ligand-receptor interaction

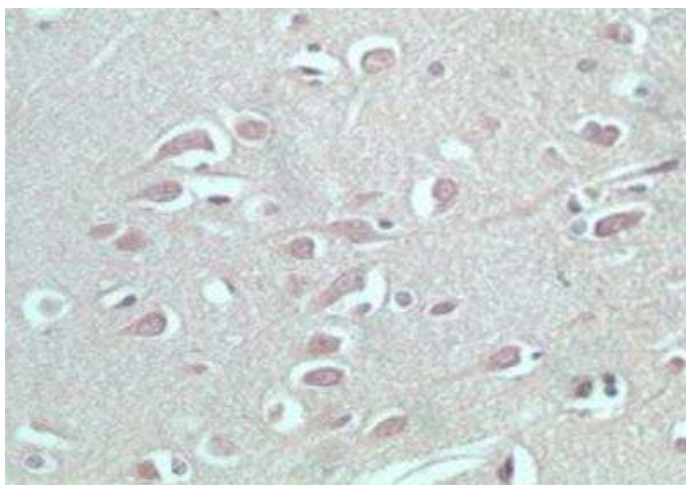


[View online »](#)

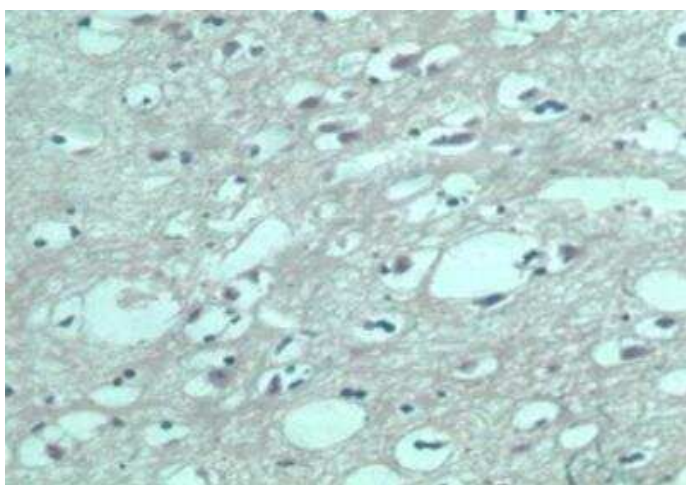
Product images:



Western Blot: S1P5/EDG-8 Antibody TA337040 - Analysis of EDG8 in human brain lysate in the 1) absence and 2) presence of immunizing peptide, 3) mouse, 4) rat using TA337040 at 5 ug/ml, 2 ug/ml and 2 ug/ml.



Immunohistochemistry-Paraffin: S1P5/EDG-8 Antibody TA337040 - Staining of normal human brain using TA337040 at 5 ug/ml.



Immunohistochemistry-Paraffin: S1P5/EDG-8
Antibody TA337040 - Staining of normal human
brain using control (rabbit Ig) at 5 ug/ml.