

Product datasheet for **TA337038**

ATG4B Rabbit Polyclonal Antibody

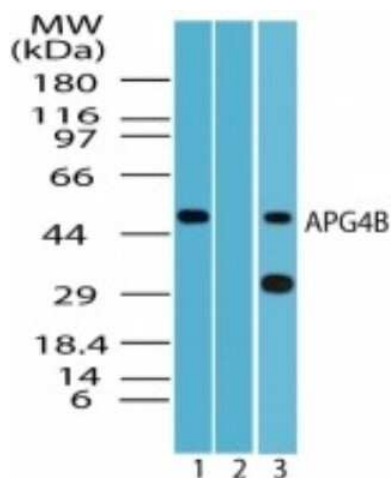
Product data:

Product Type:	Primary Antibodies
Applications:	IHC, WB
Recommended Dilution:	Immunohistochemistry, Immunohistochemistry-Paraffin: 10 ug/ml, Western Blot: 1-3 ug/ml
Reactivity:	Human, Mouse, Rat
Host:	Rabbit
Isotype:	IgG
Clonality:	Polyclonal
Immunogen:	A portion of amino acid 350-400 of human APG4B was used as the immunogen.
Formulation:	PBS containing 0.05% BSA, 0.05% Sodium Azide. Store at 4C short term. Aliquot and store at -20C long term. Avoid freeze-thaw cycles.
Concentration:	lot specific
Purification:	Protein G purified
Conjugation:	Unconjugated
Storage:	Store at -20°C as received.
Stability:	Stable for 12 months from date of receipt.
Gene Name:	autophagy related 4B cysteine peptidase
Database Link:	NP_847896 Entrez Gene 66615 Mouse Entrez Gene 316640 Rat Entrez Gene 23192 Human Q9Y4P1
Synonyms:	APG4B; AUTL1
Protein Families:	Protease
Protein Pathways:	Regulation of autophagy

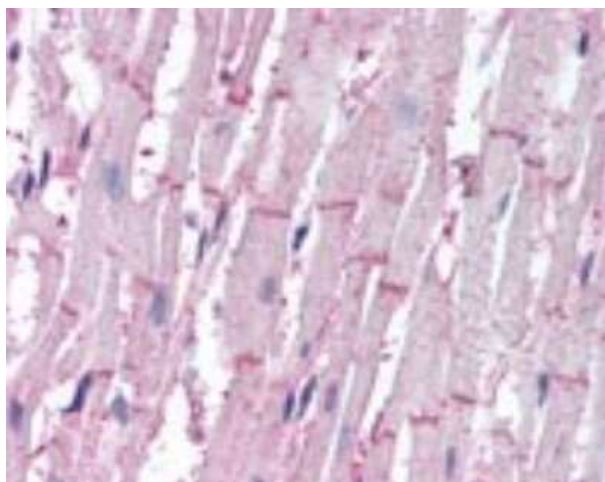


[View online »](#)

Product images:



Western Blot: ATG4B Antibody TA337038 - Analysis of APG4B in HeLa cell lysate in the 1) absence, and 2) presence of immunizing peptide and 3) RAW cell lysate using TA337038 at 2 ug/ml.



Immunohistochemistry-Paraffin: ATG4B Antibody TA337038 - Analysis of human heart using TA337038 at 10 ug/ml.