

## Product datasheet for **TA337037**

### ST2 (IL1RL1) Rabbit Polyclonal Antibody

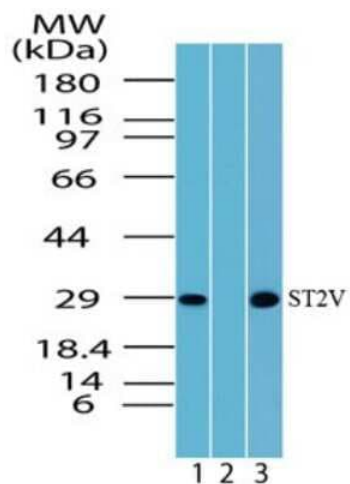
#### Product data:

Product Type:	Primary Antibodies
Applications:	WB
Recommended Dilution:	Western Blot: 3-5 ug/ml
Reactivity:	Human, Mouse
Host:	Rabbit
Isotype:	IgG
Clonality:	Polyclonal
Immunogen:	A synthetic peptide corresponding to amino acids 207-238 of human ST2V was used as immunogen, GenBank no BAA85894.
Formulation:	PBS containing 0.05% BSA, 0.05% Sodium Azide. Store at 4C short term. Aliquot and store at -20C long term. Avoid freeze-thaw cycles.
Concentration:	lot specific
Purification:	Protein G purified
Conjugation:	Unconjugated
Storage:	Store at -20°C as received.
Stability:	Stable for 12 months from date of receipt.
Gene Name:	interleukin 1 receptor like 1
Database Link:	<a href="#">NP_003847</a> <a href="#">Entrez Gene 17082 Mouse</a> <a href="#">Entrez Gene 9173 Human</a> <a href="#">Q01638</a>
Synonyms:	DER4; FIT-1; IL33R; ST2; ST2L; ST2V; T1
Protein Families:	Druggable Genome, Secreted Protein, Transmembrane



[View online »](#)

## Product images:



Western Blot: IL1RL1 Antibody TA337037 - Analysis of IL1RL1 in Daudi cell lysate in the 1) absence and 2) presence of immunizing peptide and 3) NIH 3T3 using TA337037 at 5 ug/ml and 3 ug/ml, respectively.