

Product datasheet for **TA337035**

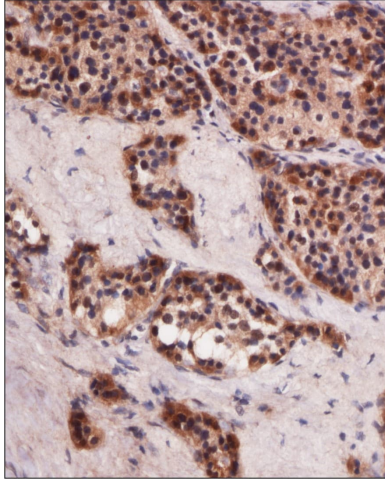
MNX1 Rabbit Polyclonal Antibody

Product data:

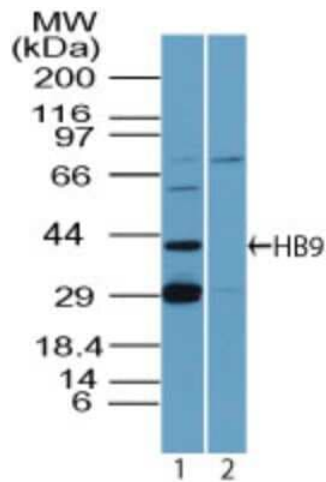
| | |
|------------------------------|--|
| Product Type: | Primary Antibodies |
| Applications: | ICC/IF, IHC, WB |
| Recommended Dilution: | Immunohistochemistry: 1:200, Immunocytochemistry/ Immunofluorescence: 1-5 ug/ml, Western Blot: 0.5-2 ug/ml, Immunohistochemistry-Paraffin: 1:200 |
| Reactivity: | Human, Mouse, Rat |
| Host: | Rabbit |
| Clonality: | Polyclonal |
| Immunogen: | A portion of amino acids 330-380 of mouse HB9 was used as the immunogen. |
| Formulation: | PBS containing 0.05% BSA, 0.05% Sodium Azide. Store at 4C short term. Aliquot and store at -20C long term. Avoid freeze-thaw cycles. |
| Concentration: | lot specific |
| Purification: | Protein A purified |
| Conjugation: | Unconjugated |
| Storage: | Store at -20°C as received. |
| Stability: | Stable for 12 months from date of receipt. |
| Gene Name: | motor neuron and pancreas homeobox 1 |
| Database Link: | NP_005506 Entrez Gene 15285 Mouse Entrez Gene 682076 Rat Entrez Gene 3110 Human P50219 |
| Synonyms: | HB9; HLXB9; HOXHB9; SCRA1 |
| Protein Families: | Druggable Genome, ES Cell Differentiation/IPS |
| Protein Pathways: | Maturity onset diabetes of the young |



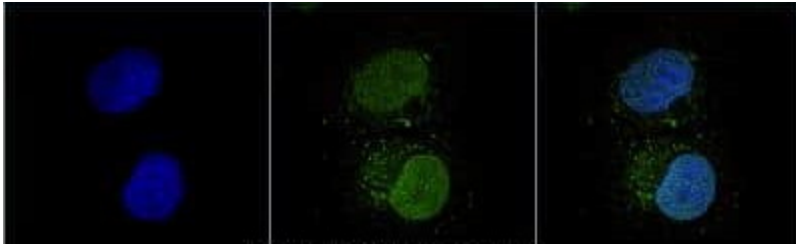
[View online »](#)

Product images:

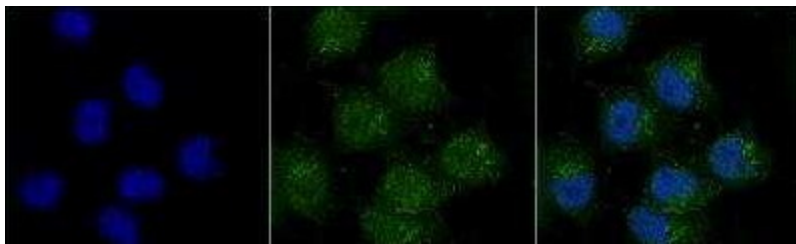
Analysis of a FFPE tissue section of human pancreas using 1:200 dilution of MNX1/HLXB9 antibody. The staining was developed using HRP labeled anti-rabbit secondary antibody and DAB reagent, and nuclei of cells were counter-stained with hematoxylin.



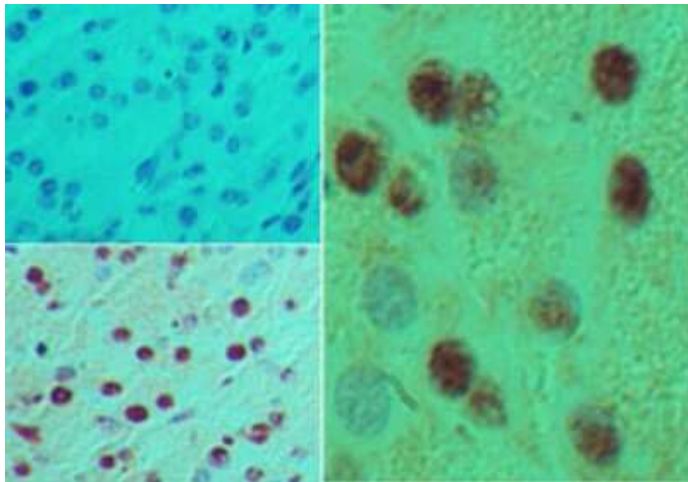
Western Blot: MNX1/HLXB9 Antibody TA337035 - Analysis of MNX1/HLXB9 in MOLT-4 cell lysates in the 1) absence and 2) presence of immunizing peptide using this antibody at 5 ug/ml. Goat anti-rabbit Ig HRP secondary antibody and PicoTect ECL substrate solution were used for this test.



Immunocytochemistry/Immunofluorescence: MNX1/HLXB9 Antibody TA337035 - MCF7 cells were fixed in 4% paraformaldehyde for 10 minutes and permeabilized in 0.05% Triton X-100 in PBS for 5 minutes. The cells were incubated with anti-MNX1/HLXB9 TA337035 at 1 ug/ml for 60 minutes at room temperature and detected with an anti-rabbit Dylight 488 (Green) at a 1:1000 dilution for 60 minutes. Nuclei were counterstained with DAPI (Blue). Cells were imaged using a 100X objective and digitally deconvolved.



Immunocytochemistry/Immunofluorescence: MNX1/HLXB9 Antibody TA337035 - Neuro2a cells were fixed in 4% paraformaldehyde for 10 minutes and permeabilized in 0.05% Triton X-100 in PBS for 5 minutes. The cells were incubated with anti-MNX1/HLXB9 TA337035 at 1 ug/ml for 60 minutes at room temperature and detected with an anti-rabbit Dylight 488 (Green) at a 1:1000 dilution for 60 minutes. Nuclei were counterstained with DAPI (Blue). Cells were imaged using a 100X objective and digitally deconvolved.



Immunohistochemistry-Paraffin: MNX1/HLXB9 Antibody TA337035 - Analysis of MNX1/HLXB9 in FFPE mouse pancreas tissue using an isotype control (top left) and this antibody (bottom left, right) at 5 ug/ml.