

## Product datasheet for **TA337034**

### Embigin homolog (EMB) Rabbit Polyclonal Antibody

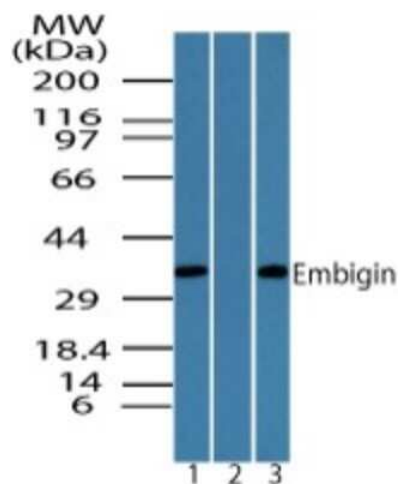
#### Product data:

Product Type:	Primary Antibodies
Applications:	WB
Recommended Dilution:	Western Blot: 0.25-2 ug/ml
Reactivity:	Human, Mouse
Host:	Rabbit
Clonality:	Polyclonal
Immunogen:	A portion of amino acids 130-180 of human Embigin was used as the immunogen for this antibody.
Formulation:	PBS containing 0.05% BSA, 0.05% Sodium Azide. Store at -20C. Avoid freeze-thaw cycles.
Concentration:	lot specific
Purification:	Protein A purified
Conjugation:	Unconjugated
Storage:	Store at -20°C as received.
Stability:	Stable for 12 months from date of receipt.
Gene Name:	embigin
Database Link:	<a href="#">NP_940851</a> <a href="#">Entrez Gene 13723 Mouse</a> <a href="#">Entrez Gene 133418 Human</a> <a href="#">Q6PCB8</a>
Synonyms:	GP70
Protein Families:	Transmembrane



[View online »](#)

## Product images:



Western Blot: Embigin/EMB Antibody TA337034 - Analysis of Embigin/EMB in MCF7 lysate in the 1) absence and 2) presence of immunizing peptide and 3) RAW lysate using Embigin/EMB antibody at 0.25 ug/ml.