

Product datasheet for **TA337032**

IFRD1 Rabbit Polyclonal Antibody

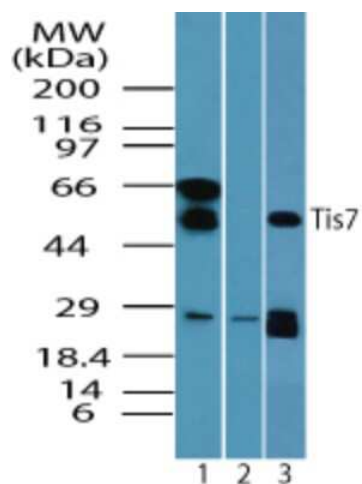
Product data:

Product Type:	Primary Antibodies
Applications:	IHC, WB
Recommended Dilution:	Immunohistochemistry, Immunohistochemistry-Paraffin: 5 ug/ml, Western Blot: 1.0-4.0 ug/ml
Reactivity:	Human, Bovine, Canine, Porcine, Primate
Host:	Rabbit
Clonality:	Polyclonal
Immunogen:	A portion of amino acids 70-120 of human Tis7 was used as the immunogen.
Formulation:	PBS containing 0.05% BSA, 0.05% Sodium Azide. Store at 4C short term. Aliquot and store at -20C long term. Avoid freeze-thaw cycles.
Concentration:	lot specific
Purification:	Protein A purified
Conjugation:	Unconjugated
Storage:	Store at -20°C as received.
Stability:	Stable for 12 months from date of receipt.
Gene Name:	interferon related developmental regulator 1
Database Link:	NP_001541 Entrez Gene 3475 Human O00458
Synonyms:	PC4; TIS7

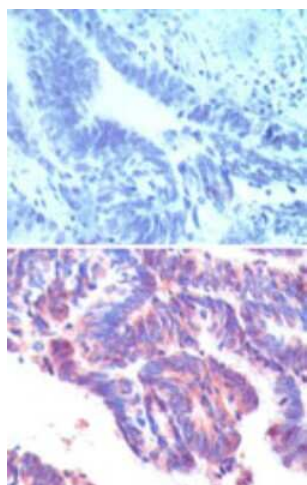


[View online »](#)

Product images:



Western Blot: IFRD1 Antibody TA337032 - Analysis of Tis7 in HeLa cell lysate in the 1) absence 2) presence of immunizing peptide and 3) RAW cell lysate using this antibody. 0 ug/ml, 1.0 ug/ml and 4.0 ug/ml respectively.



Immunohistochemistry-Paraffin: IFRD1 Antibody TA337032 - Immunohistochemical analysis of IFRD1 in formalin-fixed, paraffin-embedded human rectum tissue using an isotype control (top) and TA337032 (bottom) at 5 ug/ml.