

Product datasheet for **TA337030**

DLL3 Rabbit Polyclonal Antibody

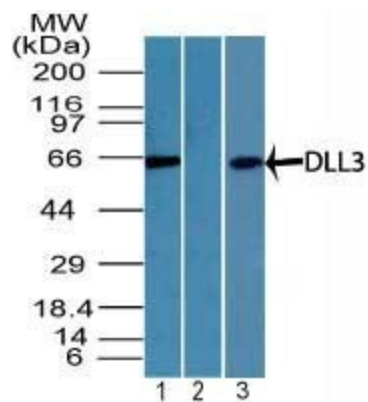
Product data:

Product Type:	Primary Antibodies
Applications:	IHC, WB
Recommended Dilution:	WB: 3-5 ug/ml, IHC-P: 5 ug/ml
Reactivity:	Human, Mouse, Primate
Host:	Rabbit
Clonality:	Polyclonal
Immunogen:	A portion of amino acid 100 to 150 of human DLL3 was used as immunogen for the antibody.
Formulation:	PBS containing 0.05% BSA, 0.05% Sodium Azide. Store at 4C short term. Aliquot and store at -20C long term. Avoid freeze-thaw cycles.
Concentration:	lot specific
Purification:	Protein A purified
Conjugation:	Unconjugated
Storage:	Store at -20°C as received.
Stability:	Stable for 12 months from date of receipt.
Gene Name:	delta like canonical Notch ligand 3
Database Link:	NP_058637 Entrez Gene 13389 MouseEntrez Gene 10683 Human
Synonyms:	SCDO1
Protein Families:	Cancer stem cells, Druggable Genome, ES Cell Differentiation/IPS, Stem cell relevant signaling - DSL/Notch pathway, Transmembrane
Protein Pathways:	Notch signaling pathway

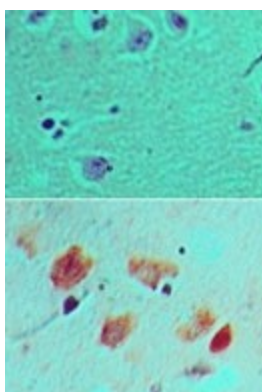


[View online »](#)

Product images:



Western Blot: DLL3 Antibody TA337030 - Analysis of DLL3 in mouse embryo brain lysate in the 1) absence and 2) presence of immunizing peptide and 3) T98G cell lysate using DLL3 antibody at 3 and 5 ug/ml respectively. Goat anti-rabbit Ig HRP secondary ant



Immunohistochemistry-Paraffin: DLL3 Antibody TA337030 - Formalin-fixed, paraffin-embedded human brain tissue probed with an isotype control (top) and DLL3 antibody (bottom) at 5 ug/ml.