

Product datasheet for **TA337028**

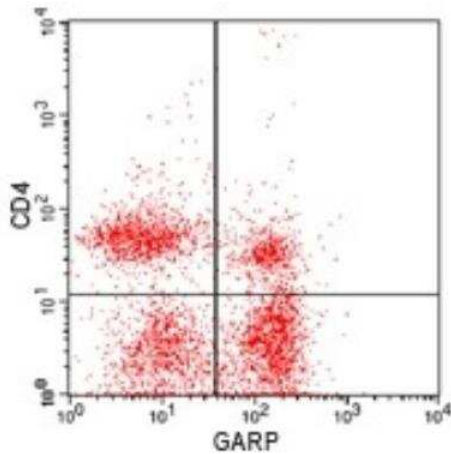
LRR32 Rabbit Polyclonal Antibody

Product data:

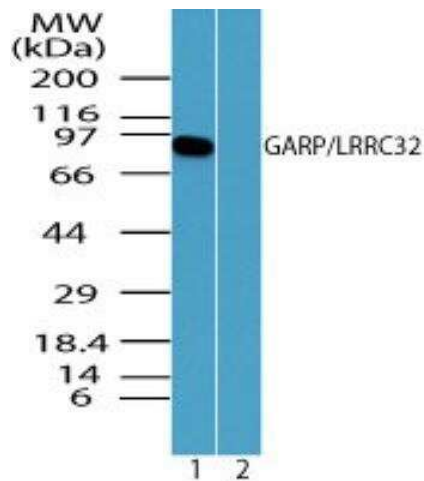
| | |
|-----------------------|---|
| Product Type: | Primary Antibodies |
| Applications: | FC, WB |
| Recommended Dilution: | Flow Cytometry: 1-3 ug/ml, Western Blot: 0.5-1.0 ug/ml |
| Reactivity: | Human, Mouse, Rat, Primate |
| Host: | Rabbit |
| Clonality: | Polyclonal |
| Immunogen: | A portion of amino acids 250-300 of human GARP/LRR32 was used as the immunogen. |
| Formulation: | PBS containing 0.05% BSA, 0.05% Sodium Azide. Store at 4C short term. Aliquot and store at -20C long term. Avoid freeze-thaw cycles. |
| Concentration: | lot specific |
| Purification: | Protein A purified |
| Conjugation: | Unconjugated |
| Storage: | Store at -20°C as received. |
| Stability: | Stable for 12 months from date of receipt. |
| Gene Name: | leucine rich repeat containing 32 |
| Database Link: | NP_005503 Entrez Gene 293135 Rat Entrez Gene 434215 Mouse Entrez Gene 2615 Human Q14392 |
| Synonyms: | D11S833E; GARP |
| Protein Families: | Transmembrane |



[View online »](#)

Product images:


Flow Cytometry: LRRC32/GARP Antibody TA337028 - BALB/c splenocytes stained with anti-GARP (TA337028), with a FITC conjugated secondary (20302), and anti-mouse CD4 PE (IMG-5922D). Viable cells in the lymphocyte gate were used for analysis. Novus's cell surface flow kit (10084K) was used for this test .



Western Blot: LRRC32/GARP Antibody TA337028 - Analysis of GARP/LRRC32 in mouse thymus lysate in the (1) absence and (2) presence of immunizing peptide using this antibody. 5 ug/ml. Goat anti-rabbit Ig HRP secondary antibody and PicoTect ECL substrate solution were used for this test.