

Product datasheet for **TA337022**

Sumo 3 (SUMO3) Rabbit Polyclonal Antibody

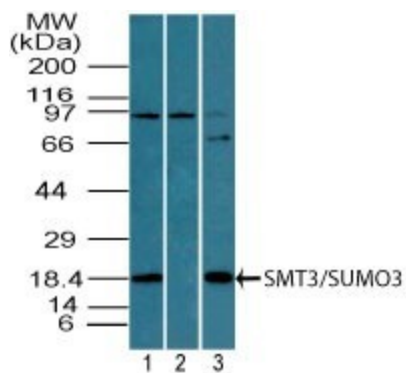
Product data:

Product Type:	Primary Antibodies
Applications:	WB
Recommended Dilution:	WB: 2-4 ug/ml
Reactivity:	Human, Mouse, Equine, Primate
Host:	Rabbit
Clonality:	Polyclonal
Immunogen:	A portion of amino acids 50-95 of human SUMO3 (SMT3) was used as the immunogen for this antibody.
Formulation:	PBS containing 0.05% BSA, 0.05% Sodium Azide. Store at 4C short term. Aliquot and store at -20C long term. Avoid freeze-thaw cycles.
Concentration:	lot specific
Purification:	Protein A purified
Conjugation:	Unconjugated
Storage:	Store at -20°C as received.
Stability:	Stable for 12 months from date of receipt.
Gene Name:	small ubiquitin-like modifier 3
Database Link:	NP_008867 Entrez Gene 20610 Mouse Entrez Gene 6612 Human P55854
Synonyms:	SMT3A; Smt3B; SMT3H1; SUMO-3
Protein Families:	Druggable Genome



[View online »](#)

Product images:



Western Blot: Sumo 3 Antibody TA337022 - Analysis of SUMO3 (SMT3) in human testis lysate in the 1) absence, 2) presence of immunizing peptide and 3) mouse testis lysate using SUMO3 antibody at 2 ug/ml. Goat anti-rabbit Ig HRP secondary antibody and Pico