

## Product datasheet for **TA337020**

### CUEDC2 Rabbit Polyclonal Antibody

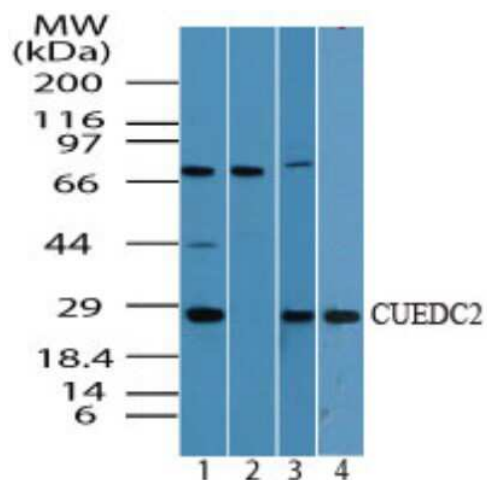
#### Product data:

Product Type:	Primary Antibodies
Applications:	WB
Recommended Dilution:	Western Blot: 0.5-1.0 ug/ml
Reactivity:	Human, Mouse, Bovine, Canine, Equine, Porcine, Primate
Host:	Rabbit
Clonality:	Polyclonal
Immunogen:	A portion of amino acid 250-300 of human CUEDC2 was used as the immunogen.
Formulation:	PBS containing 0.05% BSA, 0.05% Sodium Azide. Store at 4C short term. Aliquot and store at -20C long term. Avoid freeze-thaw cycles.
Concentration:	lot specific
Purification:	Protein A purified
Conjugation:	Unconjugated
Storage:	Store at -20°C as received.
Stability:	Stable for 12 months from date of receipt.
Gene Name:	CUE domain containing 2
Database Link:	<a href="#">NP_076945</a> <a href="#">Entrez Gene 67116 Mouse</a> <a href="#">Entrez Gene 79004 Human</a> <a href="#">Q9H467</a>
Synonyms:	bA18114.5; C10orf66



[View online »](#)

## Product images:



Western Blot: CUEDC2 Antibody TA337020 - analysis of CUEDC2 in MCF7 cell lysate in the 1) absence and 2) presence of immunizing peptide, 3) NIH 3T3 cell lysate, and 4) human spleen cell lysate using this antibody. 5 ug/ml.