

Product datasheet for **TA337019**

EDG1 (S1PR1) Rabbit Polyclonal Antibody

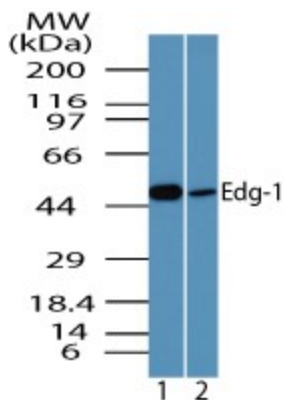
Product data:

Product Type:	Primary Antibodies
Applications:	WB
Recommended Dilution:	WB: 2-4 ug/ml
Reactivity:	Human
Host:	Rabbit
Clonality:	Polyclonal
Immunogen:	A portion of amino acids 340-400 of human EDG-1 was used as the immunogen for this antibody.
Formulation:	PBS containing 0.05% BSA, 0.05% Sodium Azide. Store at -20C. Avoid freeze-thaw cycles.
Concentration:	lot specific
Purification:	Protein A purified
Conjugation:	Unconjugated
Storage:	Store at -20°C as received.
Stability:	Stable for 12 months from date of receipt.
Gene Name:	sphingosine-1-phosphate receptor 1
Database Link:	NP_001391 Entrez Gene 1901 Human P21453
Synonyms:	CD363; CHEDG1; D1S3362; ECGF1; EDG-1; EDG1; S1P1
Protein Families:	Druggable Genome, GPCR, Transmembrane
Protein Pathways:	Neuroactive ligand-receptor interaction

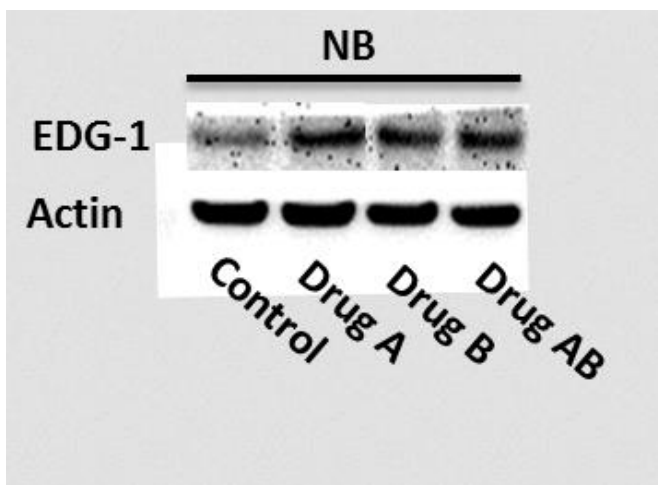


[View online »](#)

Product images:



Western Blot: EDG1 Antibody TA337019 - Analysis of EDG-1 using EDG-1 polyclonal antibody. Human lung lysate in the 1) absence and 2) presence of immunizing peptide probed using EDG-1 antibody at 2 ug/ml.



Western Blot: EDG1 Antibody TA337019 - EDG1 levels in human neuroblastoma with various drugs and control. Image from verified customer review.