

Product datasheet for **TA337011**

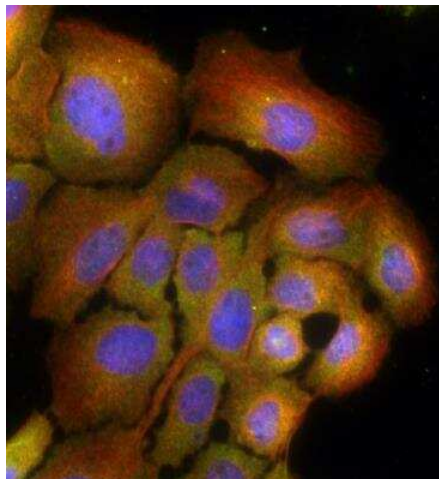
RAB7 (RAB7A) Rabbit Polyclonal Antibody

Product data:

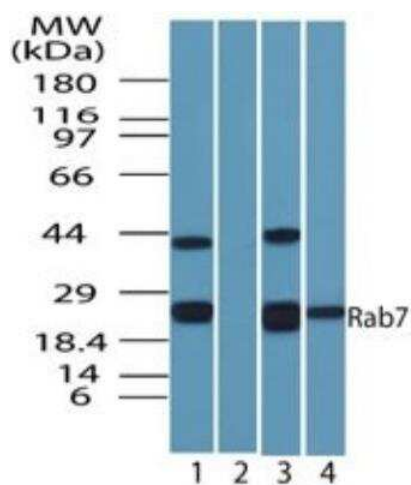
Product Type:	Primary Antibodies
Applications:	ICC/IF, IHC, WB
Recommended Dilution:	Immunohistochemistry, Immunocytochemistry/ Immunofluorescence: 2-5 ug/ml, Immunohistochemistry-Paraffin: 10 ug/ml, Western Blot: 0.5-1 ug/ml
Reactivity:	Human, Mouse, Rat, Bovine, Canine, Chicken, Primate
Host:	Rabbit
Clonality:	Polyclonal
Immunogen:	A portion of amino acids 90-140 of human Rab7 protein was used as the immunogen for this antibody.
Formulation:	PBS containing 0.05% BSA, 0.05% Sodium Azide. Store at -20C. Avoid freeze-thaw cycles.
Concentration:	lot specific
Purification:	Peptide affinity purified
Conjugation:	Unconjugated
Storage:	Store at -20°C as received.
Stability:	Stable for 12 months from date of receipt.
Gene Name:	RAB7A, member RAS oncogene family
Database Link:	NP_004628 Entrez Gene 29448 Rat Entrez Gene 7879 Human P51149
Synonyms:	PRO2706; RAB7
Protein Families:	Druggable Genome



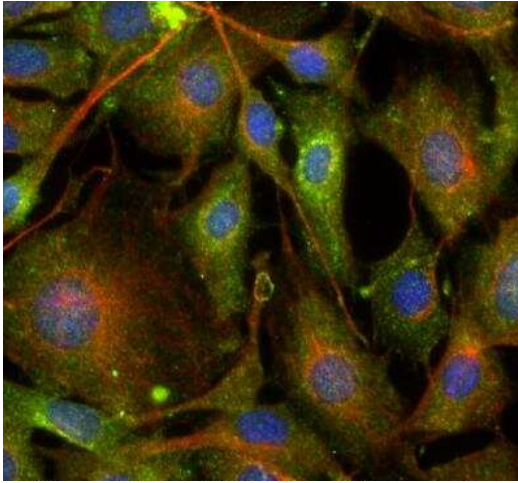
[View online »](#)

Product images:

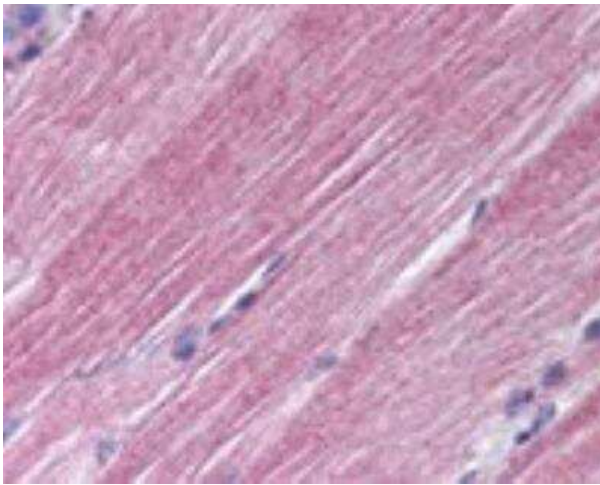
Immunocytochemistry/Immunofluorescence: Rab7a Antibody TA337011 - A431 cells were fixed for 10 minutes using 10% formalin and then permeabilized for 5 minutes using 1X PBS + 0.05% Triton-X100. The cells were incubated with anti-Rab7A at 2 ug/ml overnight at 4C and detected with an anti-rabbit Dylight 488 (Green) at a 1:500 dilution. Alpha tubulin (DM1A) NB100-690 was used as a co-stain at a 1:1000 dilution and detected with an anti-mouse Dylight 550 (Red) at a 1:500 dilution. Nuclei were counterstained with DAPI (Blue). Cells were imaged using a 40X objective.



Western Blot: Rab7a Antibody TA337011 - Analysis of human Rab7 in HeLa lysate in the 1) absence and 2) presence of immunizing peptide 3) mouse NIH 3T3 and 4) RAW using Rab7 at 0.25 ug/ml.



Immunocytochemistry/Immunofluorescence: Rab7a Antibody TA337011 - NIH3T3 cells were fixed for 10 minutes using 10% formalin and then permeabilized for 5 minutes using 1X PBS + 0.05% Triton-X100. The cells were incubated with anti-Rab7A at 2ug/ml overnight at 4C and detected with an anti-rabbit Dylight 488 (Green) at a 1:500 dilution. Alpha tubulin (DM1A) NB100-690 was used as a co-stain at a 1:1000 dilution and detected with an anti-mouse Dylight 550 (Red) at a 1:500 dilution. Nuclei were counterstained with DAPI (Blue). Cells were imaged using a 40X objective.



Immunohistochemistry-Paraffin: Rab7a Antibody TA337011 - Analysis of human skeletal muscle using RAB7A antibody at 10 ug/ml.