

## Product datasheet for **TA337010**

### RIP3 (RIPK3) Rabbit Polyclonal Antibody

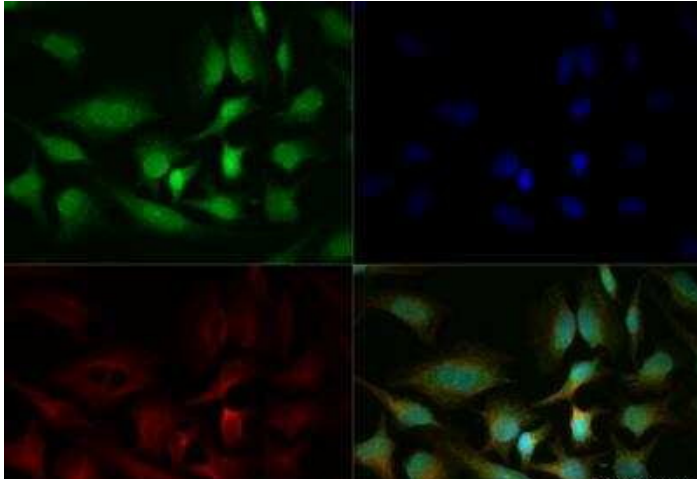
#### Product data:

Product Type:	Primary Antibodies
Applications:	ICC/IF, IHC, IP, WB
Recommended Dilution:	Immunohistochemistry, Immunocytochemistry/ Immunofluorescence: 1:20-1:500, Immunohistochemistry-Paraffin: 10 ug/ml, Western Blot: 3-7 ug/ml, Immunoprecipitation
Reactivity:	Human, Primate
Host:	Rabbit
Clonality:	Polyclonal
Immunogen:	A synthetic peptide corresponding to amino acids 497-522 (isoform CRA_a, 518 amino acids) and 298-335 (isoform CRA_b, 319 amino acids) of human RIP3 was used as immunogen for this antibody.
Formulation:	PBS containing 0.05% BSA, 0.05% Sodium Azide. Store at -20C. Avoid freeze-thaw cycles.
Concentration:	lot specific
Purification:	Peptide affinity purified
Conjugation:	Unconjugated
Storage:	Store at -20°C as received.
Stability:	Stable for 12 months from date of receipt.
Gene Name:	receptor interacting serine/threonine kinase 3
Database Link:	<a href="#">NP_006862</a> <a href="#">Entrez Gene 11035 Human</a> <a href="#">Q9Y572</a>
Synonyms:	RIP3
Protein Families:	Druggable Genome, Protein Kinase
Protein Pathways:	Cytosolic DNA-sensing pathway

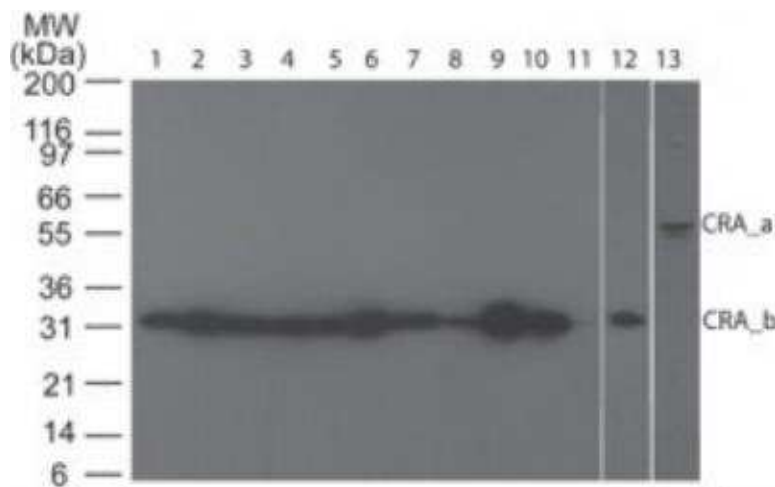


[View online »](#)

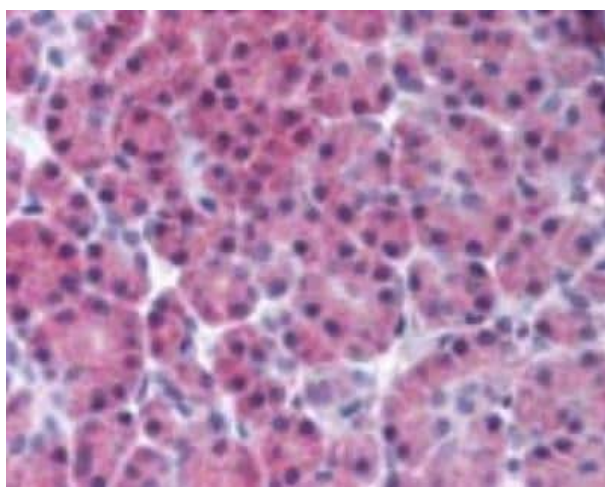
**Product images:**



Immunocytochemistry/Immunofluorescence: RIPK3/RIP3 Antibody TA337010 - HeLa cells were fixed for 10 minutes using 10% formalin and then permeabilized for 5 minutes using 1X TBS + 0.5% Triton X-100. The cells were incubated with RIPK3/RIP3 Antibody TA337010 at a 1:200 dilution overnight at 4C and detected with DyLight 488 (Green) at a 1:500 dilution. Alpha tubulin was used at a 1:1000 dilution as a co-stain and detected with DyLight 550 (Red) at a 1:500 dilution. Nuclei were detected with DAPI (Blue) at 2.0ug/ml in 1X PBS. Cells were imaged using a 40X objective.



Western Blot: RIPK3/RIP3 Antibody TA337010 - Analysis of RIP3 using polyclonal RIPK3/RIP3 antibody TA337010. Human tissue blot probed with 5 ug/ml of RIP3 antibody: 1) brain, 2) heart, 3) small intestine, 4) kidney, 5) liver, 6) lung, 7) skeletal muscle, 8) stomach, 9) spleen, 10) ovary, 11) testis, 12) placenta probed at 5 ug/ml, 13) Ramos cell lysate probed at 7 ug/ml. Theoretical molecular weight 56.7 kDa.



Immunohistochemistry-Paraffin: RIPK3/RIP3 Antibody TA337010 - Analysis of RIP3 using polyclonal RIPK3/RIP3 Antibody TA337010. Human pancreas probed with RIPK3/RIP3 antibody at 10 ug/ml.