

Product datasheet for TA337003

c Maf (MAF) Rabbit Polyclonal Antibody

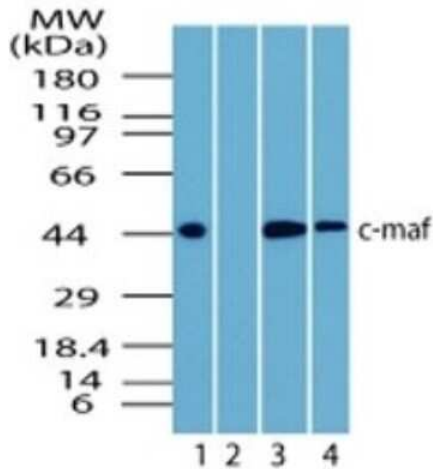
Product data:

Product Type:	Primary Antibodies
Applications:	IHC, WB
Recommended Dilution:	Immunohistochemistry-Paraffin: 1-2 ug/ml, Western Blot: 2-4 ug/ml, Immunohistochemistry
Reactivity:	Human, Mouse, Rat, Bovine
Host:	Rabbit
Clonality:	Polyclonal
Immunogen:	A synthetic peptide corresponding to amino acids 75-110 of human c-maf was used as the immunogen, GenBank no. NP_001026974.1 .
Formulation:	PBS, 0.05% Sodium Azide. Store at 4C short term. Aliquot and store at -20C long term. Avoid freeze-thaw cycles.
Concentration:	lot specific
Purification:	Immunogen affinity purified
Conjugation:	Unconjugated
Storage:	Store at -20°C as received.
Stability:	Stable for 12 months from date of receipt.
Gene Name:	MAF bZIP transcription factor
Database Link:	NP_001026974 Entrez Gene 17132 Mouse Entrez Gene 54267 Rat Entrez Gene 4094 Human O75444
Synonyms:	c-MAF; CCA4; CTRCT21
Protein Families:	Druggable Genome, Transcription Factors

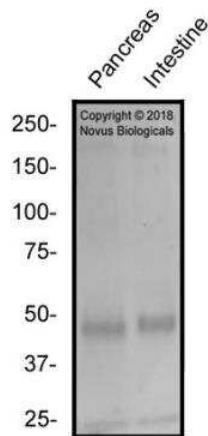


[View online »](#)

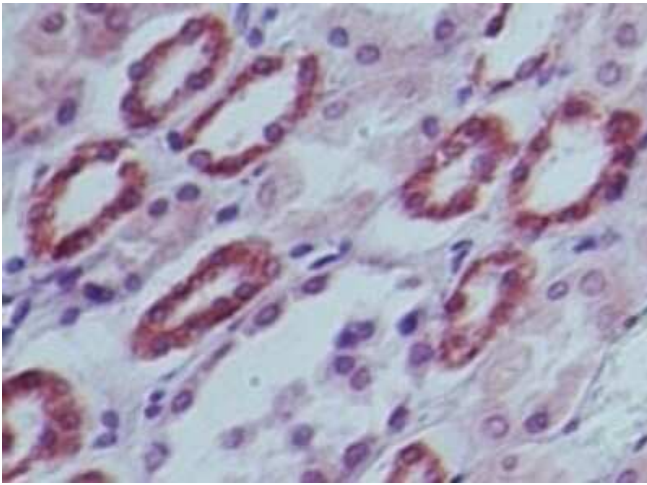
Product images:



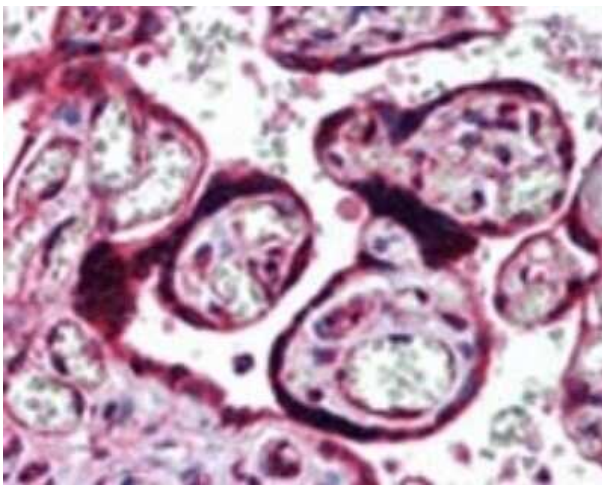
Western Blot: c-Maf Antibody TA337003 - Analysis of Lysate from human brain in the 1) absence, 2) presence of immunizing peptide, 3) mouse brain and 4) rat brain probed at 3 ug/ml.



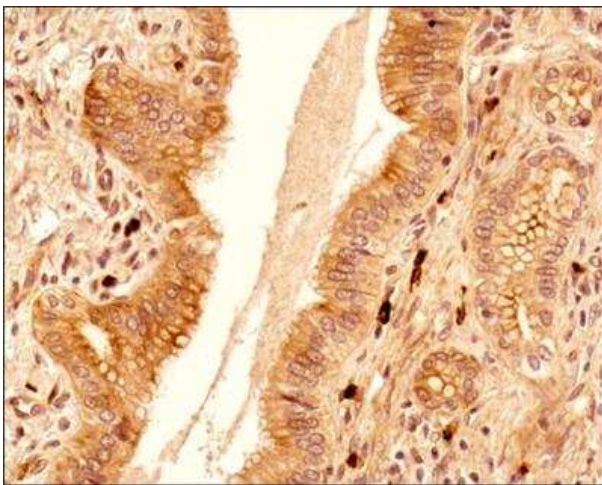
Western Blot: c-Maf Antibody TA337003 - Total protein from Human Pancreas and Human Small Intestine was separated on a 7.5% gel by SDS-PAGE, transferred to PVDF membrane and blocked in 5% non-fat milk in TBST. The membrane was probed with 2.0 ug/ml anti-cMaf in 1% block buffer and detected with an anti-rabbit HRP secondary antibody using chemiluminescence.



Immunohistochemistry-Paraffin: c-Maf Antibody TA337003 - Staining of Human kidney probed with c-maf antibody at 10 ug/ml.



Immunohistochemistry-Paraffin: c-Maf Antibody TA337003 - Staining of Human placenta probed with c-maf antibody at 10 ug/ml.



Immunohistochemistry-Paraffin: c-Maf Antibody TA337003 - IHC analysis of a formalin fixed paraffin embedded (FFPE) tissue section of human liver cancer using c-MAF antibody at 2ug/ml concentration (1:500 dilution). The primary antibody binding to c-MAF protein was detected using HRP conjugated anti-rabbit secondary antibody with DAB reagent, and the sections were further counterstained with hematoxylin for labeling cellular nuclei. This c-MAF antibody showed a very strong nuclear and moderate to strong staining in the endothelial cells (blood vessels) and in a subset of apparently infiltrating inflammatory cells. Weak to moderate cytoplasmic and nuclear staining was observed in liver cancer cells and the cells of tumor stroma including fibroblasts.