

Product datasheet for **TA336999**

MEK1 (MAP2K1) Rabbit Polyclonal Antibody

Product data:

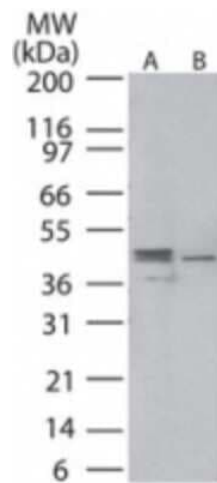
Product Type:	Primary Antibodies
Applications:	WB
Recommended Dilution:	Western Blot: 5 ug/ml
Reactivity:	Human, Mouse, Rat, Bovine, Canine, Chicken, Drosophila
Host:	Rabbit
Clonality:	Polyclonal
Immunogen:	A portion of amino acids 200-250, containing phospho serine residues at positions 218 and 222, of human MEK1 was used as the immunogen.
Formulation:	PBS, 30% glycerol, 0.1% Sodium Azide. Store at -20C. Avoid freeze-thaw cycles.
Concentration:	lot specific
Purification:	Immunogen affinity purified
Conjugation:	Unconjugated
Storage:	Store at -20°C as received.
Stability:	Stable for 12 months from date of receipt.
Gene Name:	mitogen-activated protein kinase kinase 1
Database Link:	NP_002746 Entrez Gene 26395 MouseEntrez Gene 170851 RatEntrez Gene 5604 Human Q02750
Synonyms:	CFC3; MAPKK1; MEK1; MKK1; PRKMK1
Protein Families:	Druggable Genome, Protein Kinase



[View online »](#)

Protein Pathways:

Acute myeloid leukemia, B cell receptor signaling pathway, Bladder cancer, Chemokine signaling pathway, Chronic myeloid leukemia, Colorectal cancer, Dorso-ventral axis formation, Endometrial cancer, ErbB signaling pathway, Fc epsilon RI signaling pathway, Fc gamma R-mediated phagocytosis, Focal adhesion, Gap junction, Glioma, GnRH signaling pathway, Insulin signaling pathway, Long-term depression, Long-term potentiation, MAPK signaling pathway, Melanogenesis, Melanoma, Natural killer cell mediated cytotoxicity, Neurotrophin signaling pathway, Non-small cell lung cancer, Oocyte meiosis, Pancreatic cancer, Pathways in cancer, Prion diseases, Progesterone-mediated oocyte maturation, Prostate cancer, Regulation of actin cytoskeleton, Renal cell carcinoma, T cell receptor signaling pathway, Thyroid cancer, Toll-like receptor signaling pathway, Vascular smooth muscle contraction, VEGF signaling pathway

Product images:

Western Blot: MEK1 Antibody TA336999 - Analysis of MEK1/MEK2 phosphorylation in A375 whole cell lysate. Lane A shows phospho MEK1/MEK2 (upper band), and the weakly detected nonphosphorylated form (lower band), using MEK1 phospho antibody at 3 ug/ml. Lane B shows the nonphosphorylated form of MEK1/2 using this antibody.