

Product datasheet for **TA336998**

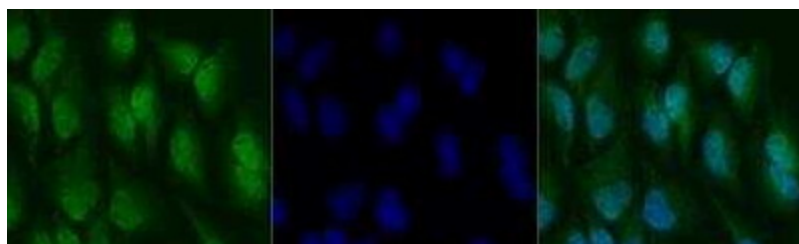
NF-kB p65 (RELA) Rabbit Polyclonal Antibody

Product data:

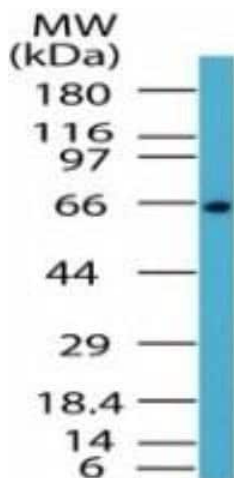
Product Type:	Primary Antibodies
Applications:	ICC/IF, IHC, WB
Recommended Dilution:	Immunohistochemistry, Immunocytochemistry/ Immunofluorescence: 5 ug/ml, Western Blot: 1-3 ug/ml, Immunohistochemistry-Paraffin: 10 ug/ml
Reactivity:	Human, Mouse, Bovine, Equine, Primate
Host:	Rabbit
Clonality:	Polyclonal
Immunogen:	A portion of the NFkB p65 NLS nuclear localization signal (NLS) (amino acids DTDDRHRIEEKRRKKT) was used as the immunogen for this antibody.
Formulation:	PBS, 30% glycerol, 0.1% Sodium Azide. Store at -20C. Avoid freeze-thaw cycles.
Concentration:	lot specific
Purification:	Immunogen affinity purified
Conjugation:	Unconjugated
Storage:	Store at -20°C as received.
Stability:	Stable for 12 months from date of receipt.
Gene Name:	RELA proto-oncogene, NF-kB subunit
Database Link:	NP_068810 Entrez Gene 19697 Mouse Entrez Gene 5970 Human Q04206
Synonyms:	NFKB3; p65
Protein Families:	Druggable Genome, Transcription Factors
Protein Pathways:	Acute myeloid leukemia, Adipocytokine signaling pathway, Apoptosis, B cell receptor signaling pathway, Chemokine signaling pathway, Chronic myeloid leukemia, Cytosolic DNA-sensing pathway, Epithelial cell signaling in Helicobacter pylori infection, MAPK signaling pathway, Neurotrophin signaling pathway, NOD-like receptor signaling pathway, Pancreatic cancer, Pathways in cancer, Prostate cancer, RIG-I-like receptor signaling pathway, Small cell lung cancer, T cell receptor signaling pathway, Toll-like receptor signaling pathway



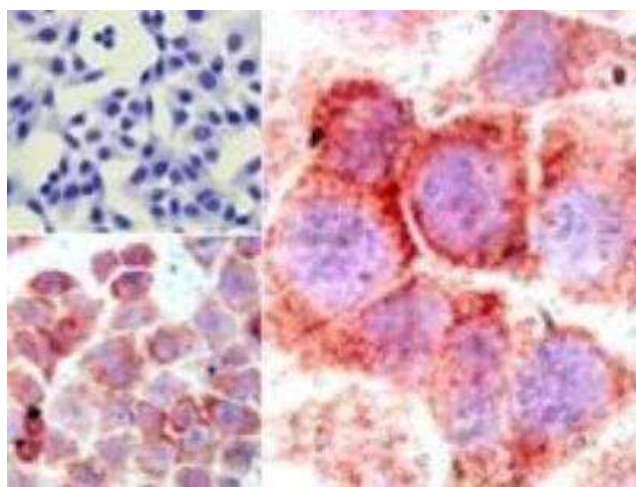
[View online »](#)

Product images:


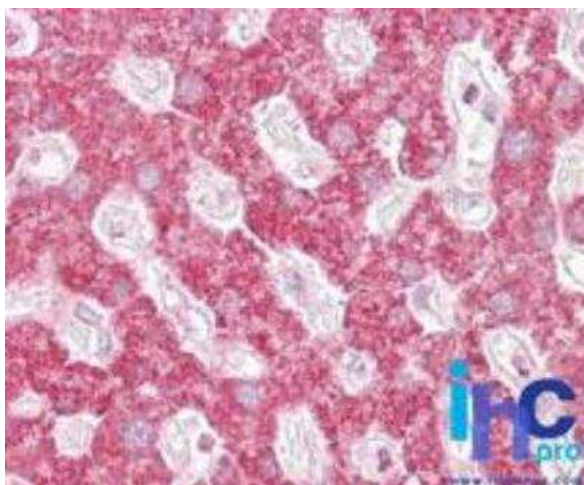
Immunocytochemistry/Immunofluorescence: RelA/NFkB p65 NLS Antibody TA336998 - HeLa cells were fixed for 10 minutes using 10% formalin and then permeabilized for 5 minutes using 1X PBS + 0.5% Triton-X100. The cells were incubated with anti-RelA/NFkB p65 NLS Antibody at 5 ug/ml overnight at 4C and detected with an anti-rabbit Dylight 488 (Green) at a 1:500 dilution. Nuclei were counterstained with DAPI (Blue). Cells were imaged using a 40X objective.



Western Blot: RelA/NFkB p65 NLS Antibody TA336998 - NFkB p65 NLS Antibody TA336998 - NFkB p65 NLS Antibody analysis of p65 NLS in Jurkat lysate using p65 NLS antibody at 1 ug/ml. Goat anti-rabbit Ig HRP secondary antibody and PicoTect ECL substrate solution were used for this test.



Immunohistochemistry-Paraffin: RelA/NFkB p65 NLS Antibody TA336998 - NFkB p65 NLS Antibody analysis of p65 NLS in formalin-fixed, paraffin-embedded human HeLa cells (top left) and LPS-stimulated HeLa cells (bottom left, right) using p65 NLS antibody at 5 ug/ml.



Immunohistochemistry-Paraffin: RelA/NFkB p65 NLS Antibody TA336998 - NFkB p65 NLS Antibody
Formalin-fixed, paraffin-embedded human liver stained with p65 NLS antibody at 10 ug/ml. Staining of formalin-fixed tissues is enhanced by boiling tissue sections in 10 mM sodium citrate buffer, pH 6.0 for 10-20 min followed by cooling at RT for 20 min.