

Product datasheet for **TA336995**

UBA6 Rabbit Polyclonal Antibody

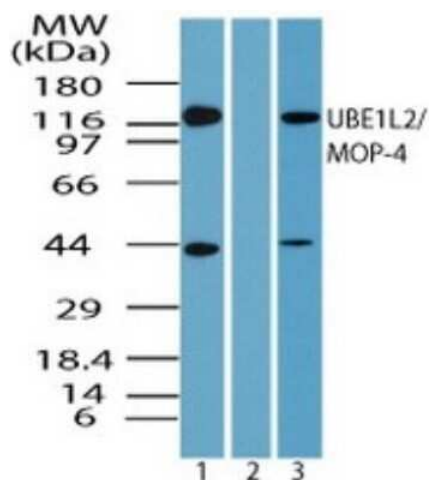
Product data:

Product Type:	Primary Antibodies
Applications:	IHC, WB
Recommended Dilution:	Immunohistochemistry, Western Blot: 0.5-2.0 ug/ml, Immunohistochemistry-Paraffin: 1:10-1:500
Reactivity:	Human
Host:	Rabbit
Clonality:	Polyclonal
Immunogen:	A portion of amino acids 775-825 of human UBE1L2 was used as the immunogen for this antibody.
Formulation:	PBS, 30% glycerol, 0.1% Sodium Azide. Store at -20C. Avoid freeze-thaw cycles.
Concentration:	lot specific
Purification:	Immunogen affinity purified
Conjugation:	Unconjugated
Storage:	Store at -20°C as received.
Stability:	Stable for 12 months from date of receipt.
Gene Name:	ubiquitin like modifier activating enzyme 6
Database Link:	NP_060697 Entrez Gene 55236 Human A0AVT1
Synonyms:	E1-L2; MOP-4; UBE1L2
Protein Pathways:	Ubiquitin mediated proteolysis



[View online »](#)

Product images:



Western Blot: FLJ10808 Antibody TA336995 - Analysis of FLJ10808 in Daudi cell lysate in the 1) absence and 2) presence of immunizing peptide and 3) RAW using FLJ10808 antibody at 1.0 ug/ml and 0.5 ug/ml respectively.