

Product datasheet for **TA336989**

AMPD1 Rabbit Polyclonal Antibody

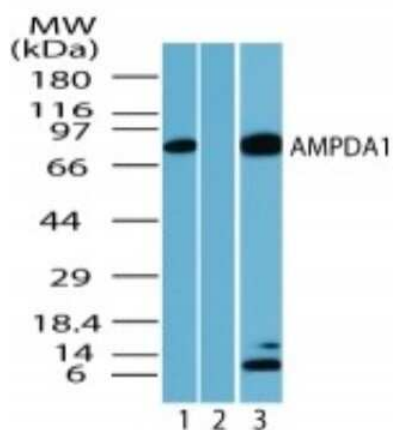
Product data:

Product Type:	Primary Antibodies
Applications:	IHC, WB
Recommended Dilution:	Immunohistochemistry, Western Blot: 0.5-2 ug/ml, Immunohistochemistry-Paraffin: 10 ug/ml
Reactivity:	Human, Mouse, Rat, Bovine, Canine, Primate
Host:	Rabbit
Clonality:	Polyclonal
Immunogen:	A portion of amino acids 140-190 of human AMPDA1 was used as the immunogen.
Formulation:	PBS, 0.05% Sodium Azide. Store at 4C short term. Aliquot and store at -20C long term. Avoid freeze-thaw cycles.
Concentration:	lot specific
Purification:	Immunogen affinity purified
Conjugation:	Unconjugated
Storage:	Store at -20°C as received.
Stability:	Stable for 12 months from date of receipt.
Gene Name:	adenosine monophosphate deaminase 1
Database Link:	NP_000027 Entrez Gene 25028 RatEntrez Gene 229665 MouseEntrez Gene 270 Human P23109
Synonyms:	MAD; MADA; MMDD
Protein Families:	Druggable Genome
Protein Pathways:	Metabolic pathways, Purine metabolism

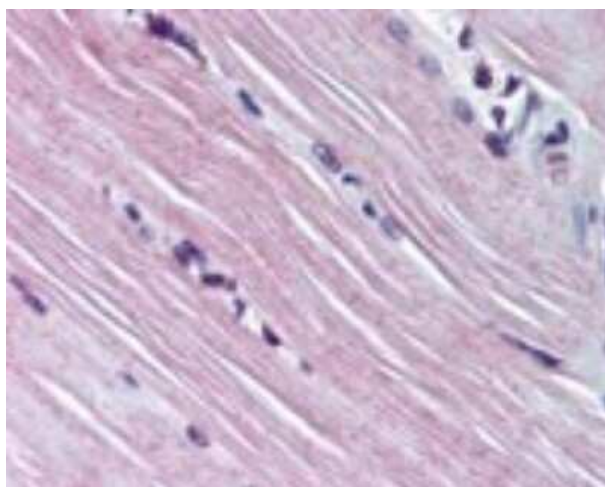


[View online »](#)

Product images:



Western Blot: AMPD1 Antibody TA336989 - Analysis of human AMPD1 in mouse skeletal muscle lysate in the 1) absence, 2) presence of immunizing peptide and 3) rat skeletal muscle using TA336989 at 1 ug/ml.



Immunohistochemistry-Paraffin: AMPD1 Antibody TA336989 - Analysis of human skeletal muscle using TA336989 at 10 ug/ml.