

## Product datasheet for **TA336980**

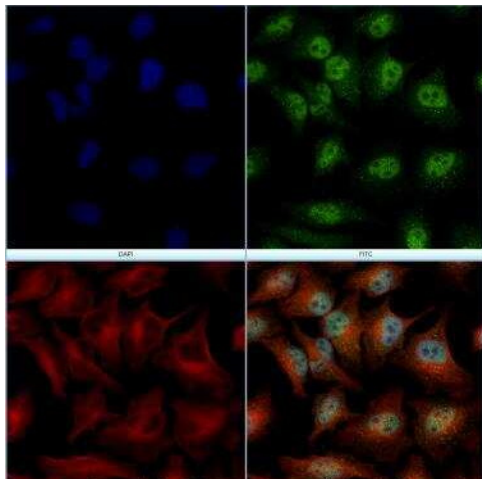
### SR1 (SRI) Rabbit Polyclonal Antibody

#### Product data:

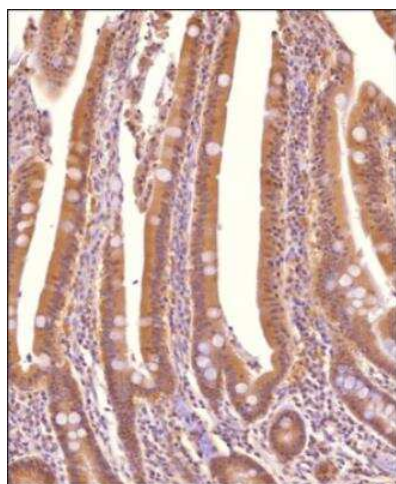
Product Type:	Primary Antibodies
Applications:	ICC/IF, IHC, WB
Recommended Dilution:	Western Blot: 0.5-2 ug/ml, Immunohistochemistry: 1:200, Immunohistochemistry-Paraffin: 1:200, Immunocytochemistry/ Immunofluorescence: 2-5 ug/ml
Reactivity:	Human, Mouse, Bovine, Canine, Equine, Primate
Host:	Rabbit
Clonality:	Polyclonal
Immunogen:	A synthetic peptide corresponding to amino acids 45-76 of human Sorcin was used as immunogen, GenBank no NP-003121.
Formulation:	PBS, 0.05% Sodium Azide. Store at 4C short term. Aliquot and store at -20C long term. Avoid freeze-thaw cycles.
Concentration:	lot specific
Purification:	Immunogen affinity purified
Conjugation:	Unconjugated
Storage:	Store at -20°C as received.
Stability:	Stable for 12 months from date of receipt.
Gene Name:	sorcin
Database Link:	<a href="#">NP_003121</a> <a href="#">Entrez Gene 109552 Mouse</a> <a href="#">Entrez Gene 6717 Human</a> <a href="#">P30626</a>
Synonyms:	CP-22; CP22; SCN; V19
Protein Families:	Druggable Genome



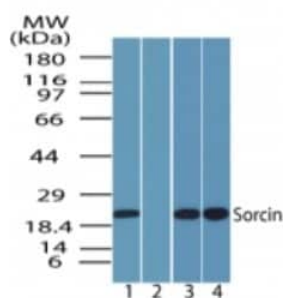
[View online »](#)

**Product images:**

Immunocytochemistry/Immunofluorescence: SRI Antibody TA336980 - HeLa cells were fixed for 10 minutes using 4% PFA and then permeabilized for 5 minutes using 1X PBS + 0.5% Triton-X100. The cells were incubated with anti-SRI at 2 ug/ml overnight at 4C and detected with an anti-rabbit Dylight 488 (Green) at a 1:500 dilution. Alpha tubulin (DM1A) NB100-690 was used as a co-stain at a 1:1000 dilution and detected with an anti-mouse Dylight 550 (Red) at a 1:500 dilution. Nuclei were counterstained with DAPI (Blue). Cells were imaged using a 40X objective.



Immunohistochemistry-Paraffin: SRI Antibody TA336980 - Analysis of a FFPE tissue section of human small intestine using 1:200 dilution of TRIM41 antibody (TA336980). The staining was developed using HRP labeled anti-rabbit secondary antibody and DAB reagent, and nuclei of cells were counter-stained with hematoxylin. Cytoplasmic staining of the glandular cells was observed.



Western Blot: SR1 Antibody TA336980 - Analysis of human Sorcin in human brain lysate in the 1) absence, 2) presence of immunizing peptide, 3) mouse brain and 4) rat brain using this antibody.