

Product datasheet for **TA336973**

RAD17 Rabbit Polyclonal Antibody

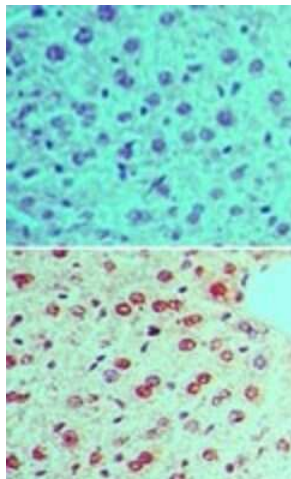
Product data:

Product Type:	Primary Antibodies
Applications:	IHC, WB
Recommended Dilution:	Western Blot: 0.025-1 ug/ml, Immunohistochemistry-Paraffin: 5 ug/ml, Immunohistochemistry
Reactivity:	Human, Mouse, Primate
Host:	Rabbit
Clonality:	Polyclonal
Immunogen:	A portion of human Rad17 protein containing a phosphorylated serine residue at position 645 was used as the immunogen.
Formulation:	PBS, 30% glycerol, 0.1% Sodium Azide. Store at -20C. Avoid freeze-thaw cycles.
Concentration:	lot specific
Purification:	Immunogen affinity purified
Conjugation:	Unconjugated
Storage:	Store at -20°C as received.
Stability:	Stable for 12 months from date of receipt.
Gene Name:	RAD17 checkpoint clamp loader component
Database Link:	NP_579922 Entrez Gene 19356 Mouse Entrez Gene 5884 Human O75943
Synonyms:	CCYC; HRAD17; R24L; RAD17SP; RAD24
Protein Families:	Druggable Genome

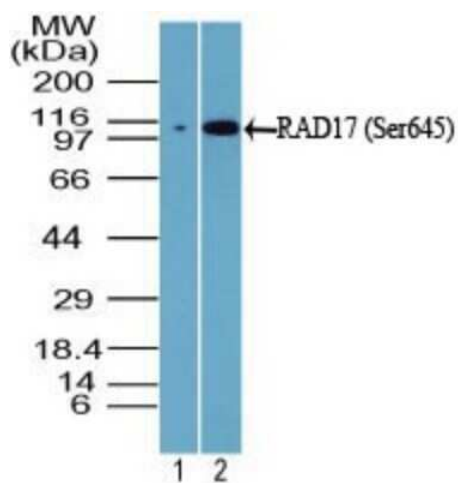


[View online »](#)

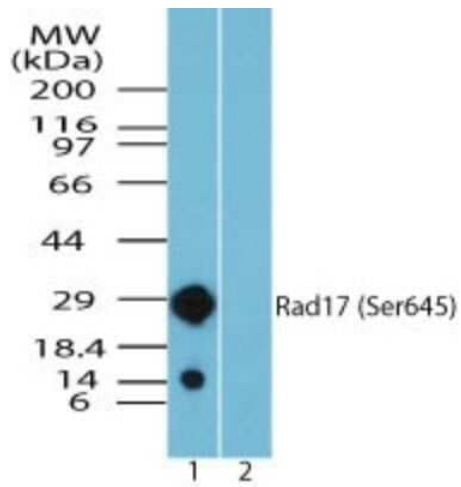
Product images:



Immunohistochemistry-Paraffin: Rad17 [p Ser645] Antibody TA336973 - Analysis of phosphorylated Rad17 in formalin-fixed, paraffin-embedded mouse liver tissue using an isotype control (top) and this antibody (bottom) at 5 ug/ml.



Western Blot: Rad17 [p Ser645] Antibody TA336973 - analysis of phosphorylated Rad17 (Ser645) in 1) untreated PANC-1 cells (a human pancreatic carcinoma) and 2) UV-treated PANC-1 cells using this antibody at 0.5 ug/ml.



Western Blot: Rad17 [p Ser645] Antibody TA336973 - Western blot analysis of phosphorylated Rad17 (Ser645) in recombinant fusion protein containing 1) a phosphorylated serine at position 645 and 2) an unphosphorylated serine at position 645 using TA336973 at 0.025 ug/ml.