

Product datasheet for **TA336971**

ROR gamma (RORC) Mouse Monoclonal Antibody [Clone ID: 4G419]

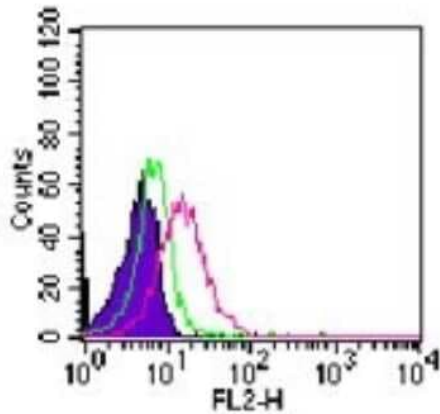
Product data:

Product Type:	Primary Antibodies
Clone Name:	4G419
Applications:	FC, WB
Recommended Dilution:	Flow Cytometry: 0.25-0.5 ug/10 ⁶ cells, Western Blot: 5 ug/ml
Reactivity:	Human, Mouse, Primate
Host:	Mouse
Isotype:	IgG1, kappa
Clonality:	Monoclonal
Immunogen:	A portion of amino acids 1-50 of human ROR gamma was used as the immunogen.
Formulation:	PBS, 0.05% sodium Azide. Store at 4C short term. Aliquot and store at -20C long term. Avoid freeze-thaw cycles.
Concentration:	lot specific
Purification:	Affinity purified
Conjugation:	Unconjugated
Storage:	Store at -20°C as received.
Stability:	Stable for 12 months from date of receipt.
Gene Name:	RAR related orphan receptor C
Database Link:	NP_005051 Entrez Gene 19885 Mouse Entrez Gene 6097 Human P51449
Synonyms:	NR1F3; RORG; RZR-GAMMA; RZRG; TOR
Protein Families:	Druggable Genome, Transcription Factors

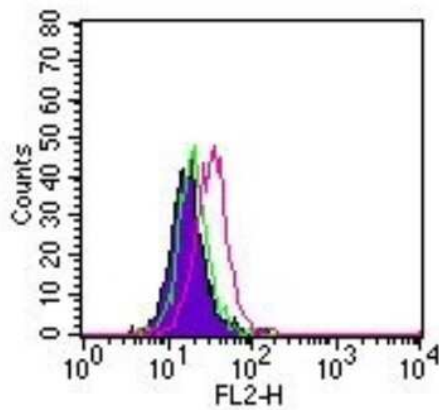


[View online »](#)

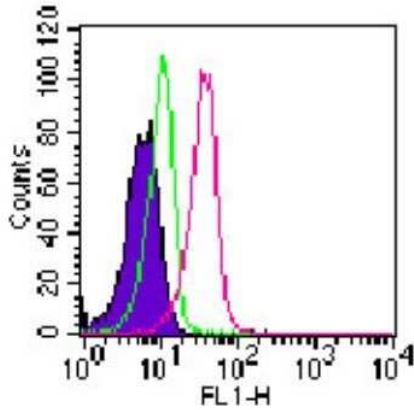
Product images:



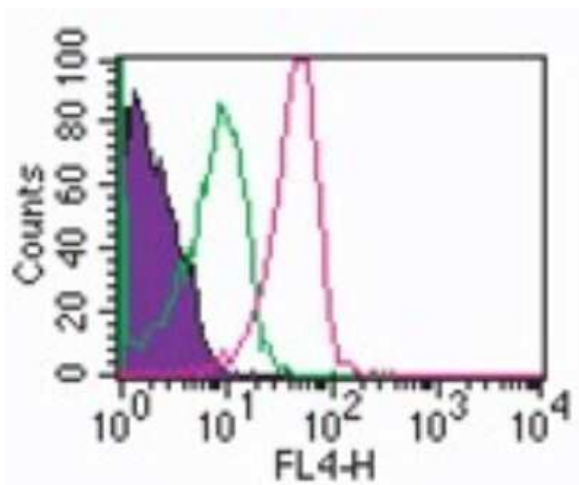
Flow Cytometry: ROR gamma/RORC/NR1F3 Antibody (4G419) TA336971 - Intracellular analysis of ROR gamma in human lymphocytes using 0.25 ug of this antibody. Shaded histogram represents cells without antibody; green represents isotype control antibody ; red represents ROR gamma antibody.



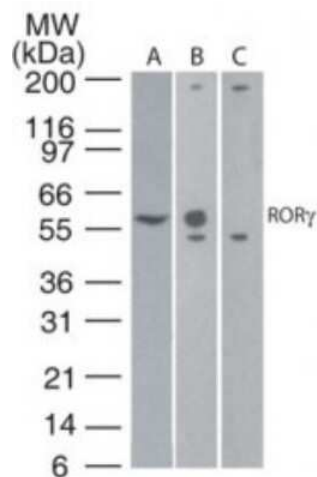
Flow Cytometry: ROR gamma/RORC/NR1F3 Antibody (4G419) TA336971 - Intracellular flow cytometric analysis of ROR gamma in human monocytes using 0.25 ug of ROR gamma antibody. Shaded histogram represents cells without antibody; green represents isotype control antibody (Novus, 20109); red represents ROR gamma antibody.



Flow Cytometry: ROR gamma/RORC/NR1F3 Antibody (4G419) TA336971 - Analysis using the FITC conjugate of TA336971. Staining of ROR gamma in human lymphocytes using 10 ul (0.25 ug) of ROR gamma antibody. Shaded histogram represents cells without antibody; green represents isotype control antibody; red represents ROR gamma



Flow Cytometry: ROR gamma/RORC/NR1F3 Antibody (4G419) TA336971 - Analysis using the Allophycocyanin conjugate of TA336971. Staining of ROR gamma in human lymphocytes using 10 ul (0.25 ug) of ROR gamma antibody. Shaded histogram represents cells without antibody; green represents isotype control antibody was used for this test.



Western Blot: ROR gamma/RORC/NR1F3 Antibody (4G419) TA336971 - Analysis in (A) human thymus lysate, (B) transfected 293 cell lysate, and (C) untransfected 293 cell lysate. Dilution: 5 ug/ml.