

## Product datasheet for **TA336970**

### RGS18 Rabbit Polyclonal Antibody

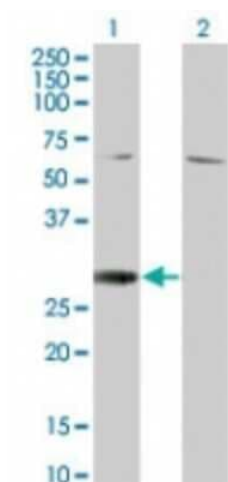
#### Product data:

Product Type:	Primary Antibodies
Applications:	ICC/IF, WB
Recommended Dilution:	Immunocytochemistry/ Immunofluorescence: 1: 100, Western Blot: 1:250-1: 1000
Reactivity:	Human
Host:	Rabbit
Clonality:	Polyclonal
Immunogen:	Within the range of amino acids 30-62 of human RGS18 protein were used as the immunogen.
Formulation:	Store at -20C. Avoid freeze-thaw cycles.
Concentration:	lot specific
Purification:	Whole antisera
Conjugation:	Unconjugated
Storage:	Store at -20°C as received.
Stability:	Stable for 12 months from date of receipt.
Gene Name:	regulator of G-protein signaling 18
Database Link:	<a href="#">NP_570138</a> <a href="#">Entrez Gene 64407 Human</a> <a href="#">Q9NS28</a>
Synonyms:	RGS13



[View online »](#)

## Product images:



Western Blot: RGS18 Antibody TA336970 -  
Western blot analysis of RGS18 in 1) transfected  
293T cells and 2) untransfected 293T cells using  
TA336970 at 1:500.