

Product datasheet for **TA336967**

MAP1LC3A Rabbit Polyclonal Antibody

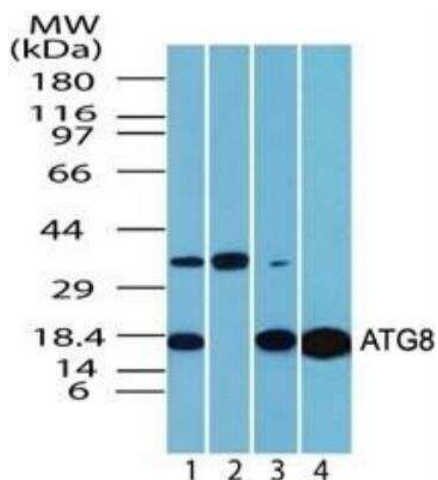
Product data:

Product Type:	Primary Antibodies
Applications:	IHC, WB
Recommended Dilution:	Western Blot: 1:1000, Immunohistochemistry-Paraffin: 5 - 10 ug/mL, Immunohistochemistry
Reactivity:	Human, Mouse, Rat, Bovine, Opossum, Primate
Host:	Rabbit
Isotype:	IgG
Clonality:	Polyclonal
Immunogen:	A portion of amino acids 1-50 of human ATG8 (LC3, MAP1LC3A, APG8) was used as the immunogen.
Formulation:	PBS containing 0.05% BSA, 0.05% Sodium Azide. Store at 4C short term. Aliquot and store at -20C long term. Avoid freeze-thaw cycles.
Concentration:	lot specific
Purification:	Protein G purified
Conjugation:	Unconjugated
Storage:	Store at -20°C as received.
Stability:	Stable for 12 months from date of receipt.
Gene Name:	microtubule associated protein 1 light chain 3 alpha
Database Link:	NP_115903 Entrez Gene 66734 Mouse Entrez Gene 362245 Rat Entrez Gene 84557 Human Q9H492
Synonyms:	ATG8E; LC3; LC3A; MAP1ALC3; MAP1BLC3

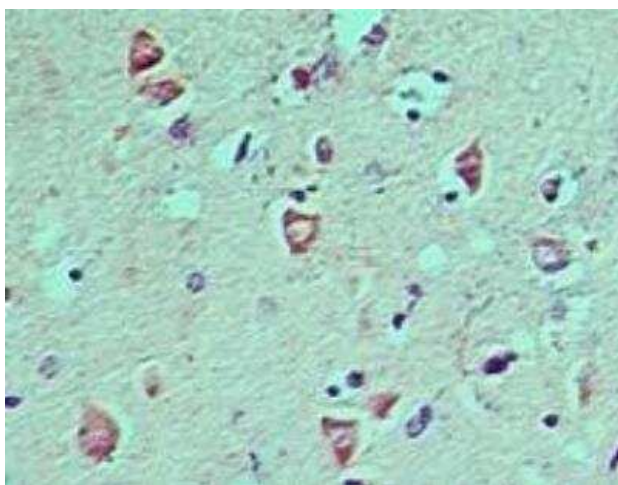


[View online »](#)

Product images:



Western Blot: LC3A Antibody TA336967 - Lysate from human brain in the 1) absence, 2) presence of immunizing peptide, 3) mouse brain and 4) rat brain probed with ATG8 antibody at 1 ug/mL.



Immunohistochemistry-Paraffin: LC3A Antibody TA336967 - Staining of Human brain probed with ATG8 antibody at 5 ug/ml.