

Product datasheet for **TA336966**

SOX2 Rabbit Polyclonal Antibody

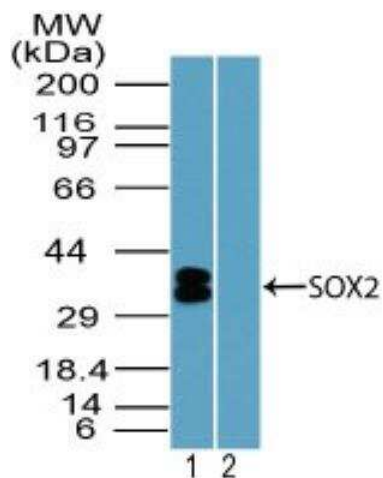
Product data:

Product Type:	Primary Antibodies
Applications:	ICC/IF, IHC, WB
Recommended Dilution:	Western Blot: 1-3 ug/ml, Immunohistochemistry-Paraffin: 20 ug/ml, Immunocytochemistry/Immunofluorescence, Immunohistochemistry
Reactivity:	Human, Mouse, Chicken, Feline, Porcine, Primate
Host:	Rabbit
Clonality:	Polyclonal
Immunogen:	A portion of amino acids 100-150 of human SOX2 was used as the immunogen for the antibody.
Formulation:	PBS, 30% glycerol, 0.1% Sodium Azide. Store at -20C. Avoid freeze-thaw cycles.
Concentration:	lot specific
Purification:	Immunogen affinity purified
Conjugation:	Unconjugated
Storage:	Store at -20°C as received.
Stability:	Stable for 12 months from date of receipt.
Gene Name:	SRY-box 2
Database Link:	NP_003097 Entrez Gene 20674 Mouse Entrez Gene 6657 Human P48431
Synonyms:	ANOP3; MCOPS3
Note:	Staining of formalin-fixed tissues is enhanced by boiling tissue sections in 10 mM sodium citrate buffer, pH 6.0 for 10-20 min followed by cooling at RT for 20 min.
Protein Families:	Adult stem cells, Cancer stem cells, Embryonic stem cells, ES Cell Differentiation/IPS, Induced pluripotent stem cells, Transcription Factors

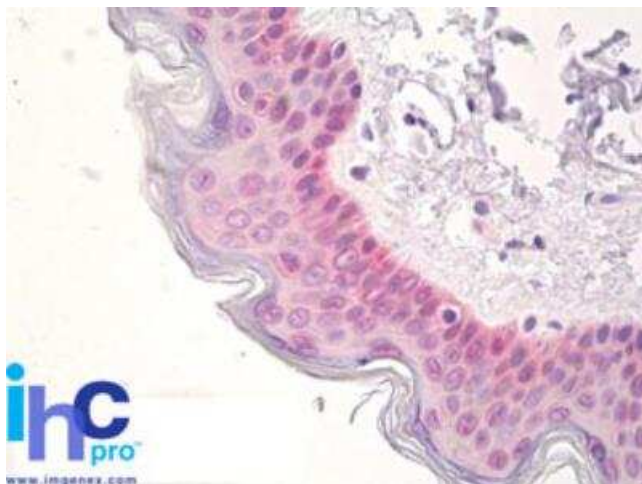


[View online »](#)

Product images:



Western Blot: SOX2 Antibody TA336966 - Analysis of SOX2 in mouse embryo brain lysate in the 1) absence and 2) presence of immunizing peptide using this antibody. Goat anti-rabbit Ig HRP secondary antibody and PicoTect ECL substrate solution were used for this test.



Immunohistochemistry-Paraffin: SOX2 Antibody TA336966 - FFPE human skin stained with SOX2 antibody at 20 ug/ml.