

Product datasheet for **TA336954**

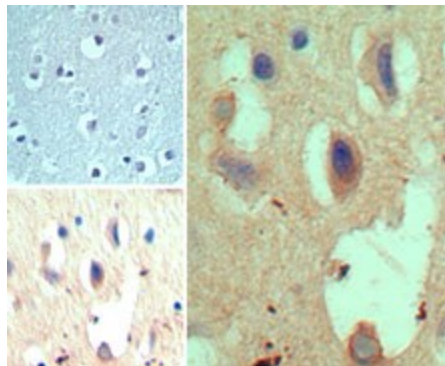
HES1 Rabbit Polyclonal Antibody

Product data:

Product Type:	Primary Antibodies
Applications:	IHC
Recommended Dilution:	IHC-P: 1: 1000-1:2000
Reactivity:	Human, Mouse, Rat, Bovine, Primate
Host:	Rabbit
Clonality:	Polyclonal
Immunogen:	A portion of amino acids 230-280 of human HES1 was used as the immunogen.
Formulation:	Store at -20C. Avoid freeze-thaw cycles.
Concentration:	lot specific
Purification:	Whole antisera
Conjugation:	Unconjugated
Storage:	Store at -20°C as received.
Stability:	Stable for 12 months from date of receipt.
Gene Name:	hes family bHLH transcription factor 1
Database Link:	NP_005515 Entrez Gene 15205 MouseEntrez Gene 29577 RatEntrez Gene 3280 Human Q14469
Synonyms:	bHLHb39; HES-1; HHL; HRY
Protein Families:	Adult stem cells, Cancer stem cells, Druggable Genome, ES Cell Differentiation/IPS, Stem cell relevant signaling - DSL/Notch pathway, Transcription Factors
Protein Pathways:	Maturity onset diabetes of the young, Notch signaling pathway



[View online »](#)

Product images:

Immunohistochemistry-Paraffin: Hes1 Antibody TA336954 - Analysis of HES1 in formalin-fixed paraffin-embedded human brain tissue using an isotype control (top left) and this antibody (bottom left, right) at 1:2000.