

Product datasheet for **TA336947**

ABCG5 Mouse Monoclonal Antibody [Clone ID: 1B5E10]

Product data:

Product Type:	Primary Antibodies
Clone Name:	1B5E10
Applications:	ELISA, FC, IF, IHC, WB
Recommended Dilution:	Flow Cytometry: 1:200 - 1:400, ELISA: 1:10000, Immunohistochemistry: 1:200 - 1:2000, Western Blot: 1:500 - 1:2000, Immunohistochemistry-Paraffin: 1:200 - 1:2000, ICC/IF (Negative)
Reactivity:	Human
Host:	Mouse
Isotype:	IgG1
Clonality:	Monoclonal
Immunogen:	Partial recombinant human ABCG5 (between residues 300-500) expressed in E. coli [UniProt Q9H222].
Formulation:	PBS, 0.03% Sodium Azide. Store at 4C short term. Aliquot and store at -20C long term. Avoid freeze-thaw cycles.
Concentration:	lot specific
Purification:	Ammonium sulfate precipitation
Conjugation:	Unconjugated
Storage:	Store at -20°C as received.
Stability:	Stable for 12 months from date of receipt.
Gene Name:	ATP binding cassette subfamily G member 5
Database Link:	NP_071881 Entrez Gene 64240 Human Q9H222



[View online »](#)

Background:

ABCG5 is a member of the superfamily of ATP-binding cassette (ABC) transporters. ABC proteins transport various molecules across extra- and intra-cellular membranes. ABC proteins are divided into seven distinct subfamilies (ABC1, MDR/TAP, MRP, ALD, OABP, GCN20, White). ABCG5 is a member of the White subfamily. It functions as a half-transporter to limit intestinal absorption and promote biliary excretion of sterols. ABCG5 is expressed in a tissue-specific manner in the liver, colon, and intestine. Mutations in this protein may contribute to sterol accumulation and atherosclerosis, and they have been observed in patients with sitosterolemia (1).

Synonyms:

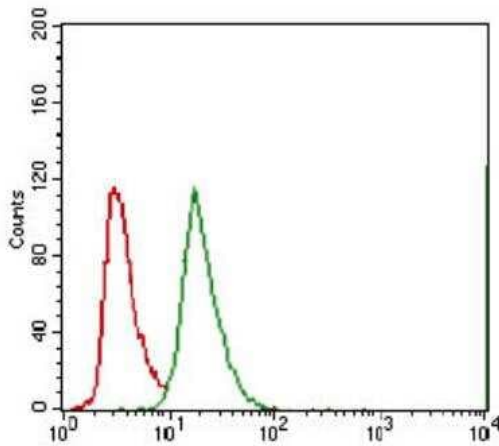
STSL

Protein Families:

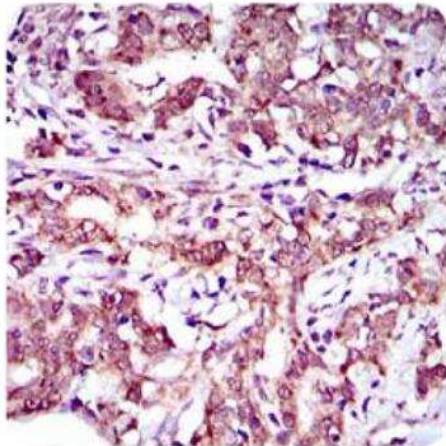
Druggable Genome, Transmembrane

Protein Pathways:

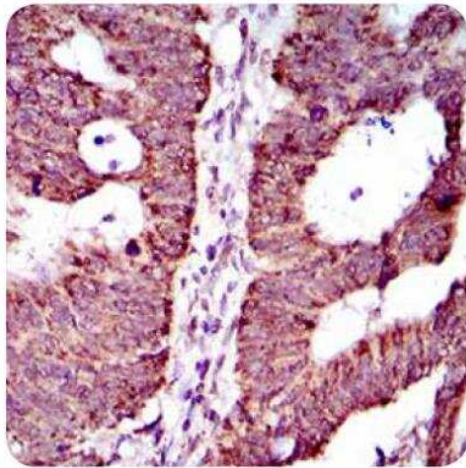
ABC transporters

Product images:

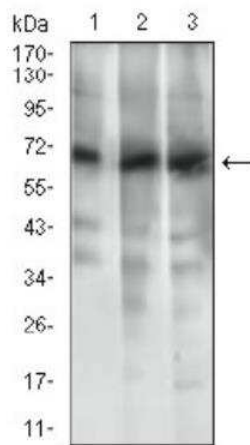
Flow Cytometry: ABCG5 Antibody (1B5E10) TA336947 - Flow cytometry analysis of A549 cells using ABCG5 mouse mAb (green) and negative control (red).



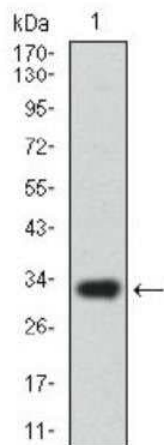
Immunohistochemistry: ABCG5 Antibody (1B5E10) TA336947 - IHC analysis of paraffin-embedded human cervical cancer tissues with DAB staining.



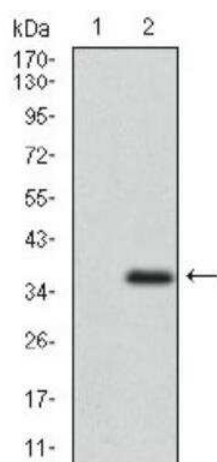
Immunohistochemistry: ABCG5 Antibody (1B5E10) TA336947 - IHC analysis of paraffin-embedded rectum cancer tissues using ABCG5 mouse mAb with DAB staining.



Western Blot: ABCG5 Antibody (1B5E10) TA336947 - Western blot analysis of ABCG5 in (1) HL7702, (2) RAJI and (3) Jurkat cell lysate.



Western Blot: ABCG5 Antibody (1B5E10) TA336947 - Western blot analysis of ABCG5 in human ABCG5 recombinant protein. (Expected MW is 32.7 kDa)



Western Blot: ABCG5 Antibody (1B5E10)
TA336947 - Western blot analysis of ABCG5 in (1)
HEK293 and (2) ABCG5 hlgGfc transfected
HEK293 cell lysate.