

Product datasheet for **TA336946**

SCP3 (SYCP3) Mouse Monoclonal Antibody [Clone ID: 6F9C5]

Product data:

Product Type:	Primary Antibodies
Clone Name:	6F9C5
Applications:	ELISA, FC, ICC/IF, IHC, WB
Recommended Dilution:	ELISA: 1:10000, Immunocytochemistry/ Immunofluorescence: 1:200 - 1:1000, Immunohistochemistry: 1:200 - 1:1000, Immunohistochemistry-Paraffin: 1:200 - 1:1000, Western Blot: 1:500 - 1:2000, Flow Cytometry: 1:200 - 1:400
Reactivity:	Human
Host:	Mouse
Isotype:	IgG1
Clonality:	Monoclonal
Immunogen:	Partial recombinant human SCP3 (between residues 1-200) expressed in E. coli [UniProt Q8IZU3]
Formulation:	PBS, 0.03% Sodium Azide. Store at 4C short term. Aliquot and store at -20C long term. Avoid freeze-thaw cycles.
Concentration:	lot specific
Purification:	Ammonium sulfate precipitation
Conjugation:	Unconjugated
Storage:	Store at -20°C as received.
Stability:	Stable for 12 months from date of receipt.
Gene Name:	synaptonemal complex protein 3
Database Link:	NP_710161 Entrez Gene 50511 Human Q8IZU3



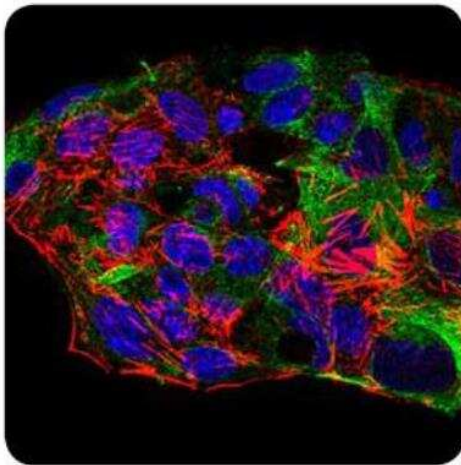
[View online »](#)

Background:

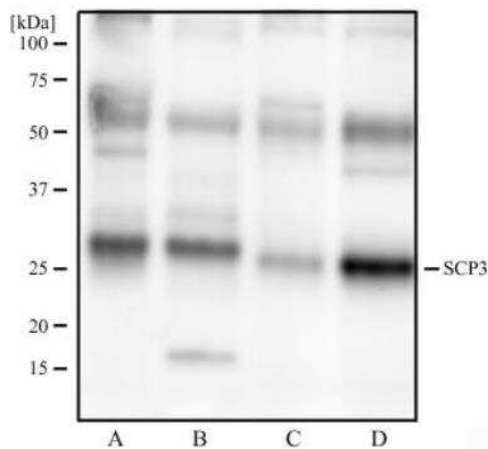
SCP3 (Synaptonemal complex protein 3) is a DNA-binding nuclear protein that belongs to XLR/SYCP3 family and is an essential structural component of the transverse filaments of synaptonemal complexes formed between homologous chromosomes during meiotic prophase. Synaptonemal complex develops during prophase of first meiosis, wherein it allows the synapse as well as recombination between maternal - paternal chromosome, and SCP3 is essential to hold cohesin complex between homologous chromosomes, which avoid premature segregation thereby preventing aneuploidies. SCP3 is involved in phosphorylation of HORMAD1 and HORMAD2. It is essential to development of testis (where it is primarily localized) and defective SCP3 may leads to spermatogenic failure type 4 (SPGF4). SCP3 deficient mouse depicts high numbers of aneuploidies in oocytes and offspring. SCP3 is also expressed in certain malignancies including human acute lymphatic leukemias, cervical cancer cells, lung cancer cells etc.

Synonyms:

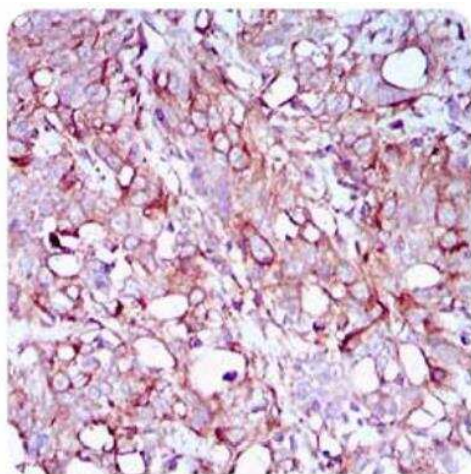
COR1; SCP3; SPGF4

Product images:

Immunocytochemistry/Immunofluorescence:
SCP3/SYCP3 Antibody (6F9C5) TA336946 -
Analysis of HepG2 cells using SCP3 mouse mAb
(green). DRAQ5 fluorescent DNA dye (blue). Actin
filaments have been labelled with Alexa Fluor-
555 phalloidin (red).



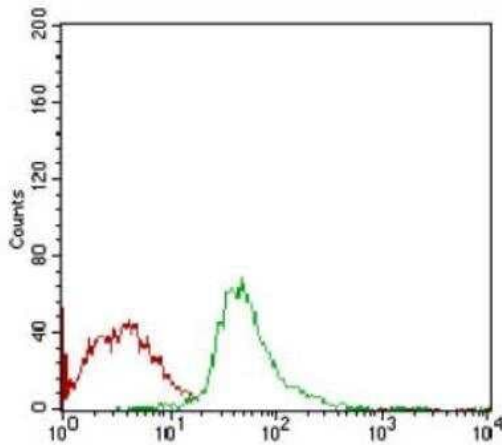
Western Blot: SCP3/SYCP3 Antibody (6F9C5) TA336946 - Analysis of human testis tissue (A), human ovary tissue (B), mouse testis tissue (C), and mouse ovary tissue (D) using SCP3 antibody at 2 ug/ml.



Immunohistochemistry: SCP3/SYCP3 Antibody (6F9C5) TA336946 - Analysis of paraffin-embedded human cervical cancer tissues with DAB staining.



Immunohistochemistry: SCP3/SYCP3 Antibody (6F9C5) TA336946 - Analysis of paraffin-embedded kidney tissues using SYCP3 mouse mAb with DAB staining.



Flow Cytometry: SCP3/SYCP3 Antibody (6F9C5)
TA336946 - Analysis of Jurkat cells using SCP3
mouse mAb (green) and negative control (red).