

Product datasheet for **TA336944**

Annexin A1 (ANXA1) Mouse Monoclonal Antibody [Clone ID: 2F1]

Product data:

| | |
|-----------------------|--|
| Product Type: | Primary Antibodies |
| Clone Name: | 2F1 |
| Applications: | ELISA, ICC/IF, IHC, WB |
| Recommended Dilution: | Immunocytochemistry/ Immunofluorescence, ELISA: 1:10000, Immunohistochemistry: 1:200 - 1:1000, Western Blot: 1:500 - 1:2000, Immunohistochemistry-Paraffin: 1:200 - 1:1000 |
| Reactivity: | Human, Mouse, Primate |
| Host: | Mouse |
| Isotype: | IgG1 |
| Clonality: | Monoclonal |
| Immunogen: | Partial recombinant human Annexin A1 (between residues 100-300) expressed in E. coli [UniProt P04083] |
| Formulation: | PBS, 0.03% Sodium Azide. Store at 4C short term. Aliquot and store at -20C long term. Avoid freeze-thaw cycles. |
| Concentration: | lot specific |
| Purification: | Ammonium sulfate precipitation |
| Conjugation: | Unconjugated |
| Storage: | Store at -20°C as received. |
| Stability: | Stable for 12 months from date of receipt. |
| Gene Name: | annexin A1 |
| Database Link: | NP_000691 Entrez Gene 16952 Mouse Entrez Gene 301 Human P04083 |

Background: Annexin I belongs to a family of Ca(2+)-dependent phospholipid binding proteins which have a molecular weight of approximately 35,000 to 40,000 and are preferentially located on the cytosolic face of the plasma membrane. Annexin I protein has an apparent relative molecular mass of 40 kDa, with phospholipase A2 inhibitory activity. Since phospholipase A2 is required for the biosynthesis of the potent mediators of inflammation, prostaglandins and leukotrienes, annexin I may have potential anti-inflammatory activity. [provided by RefSeq]

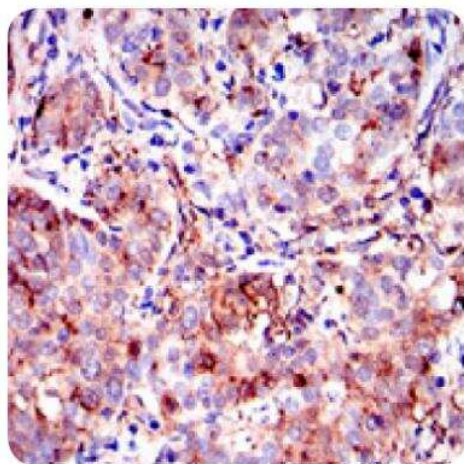


[View online »](#)

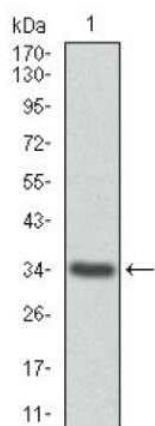
Synonyms: ANX1; LPC1

Protein Families: Druggable Genome

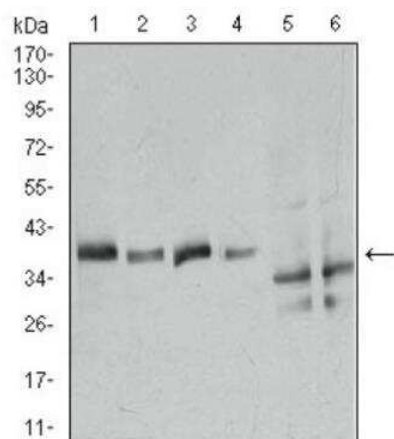
Product images:



Immunohistochemistry: Annexin A1 Antibody (2F1) TA336944 - IHC analysis of paraffin embedded human cervical cancer tissues with DAB staining.



Western Blot: Annexin A1 Antibody (2F1) TA336944 - WB detection of ANXA1 in human ANXA1 recombinant protein.



Western Blot: Annexin A1 Antibody (2F1) TA336944 - WB analysis of ANXA1 in (1) Hela, (2) A549, (3) K562, (4) NIH3T3, (5) C6, and (6) COS7 cell lysate.