

Product datasheet for **TA336941**

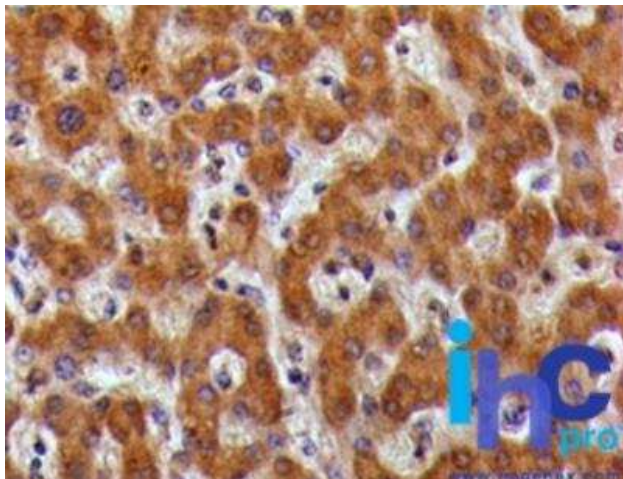
CRLF2 Mouse Polyclonal Antibody

Product data:

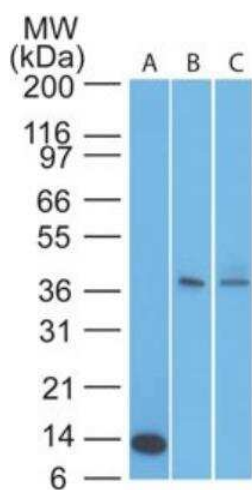
Product Type:	Primary Antibodies
Applications:	IHC, WB
Recommended Dilution:	Immunohistochemistry: 1:10-1:500, Western Blot: 1-5 ug/ml, Immunohistochemistry-Paraffin: 5-7 ug/ml
Reactivity:	Human
Host:	Mouse
Isotype:	IgG2a, kappa
Clonality:	Polyclonal
Immunogen:	Amino acids 119-231 of human TSLPR protein were used as the immunogen for the antibody.
Formulation:	PBS containing 0.05% BSA, 0.05% Sodium Azide. Store at 4C short term. Aliquot and store at -20C long term. Avoid freeze-thaw cycles.
Concentration:	lot specific
Purification:	Protein G purified
Conjugation:	Unconjugated
Storage:	Store at -20°C as received.
Stability:	Stable for 12 months from date of receipt.
Gene Name:	cytokine receptor-like factor 2
Database Link:	NP_071431 Entrez Gene 64109 Human Q9HC73
Synonyms:	CRL2; CRLF2Y; TSLPR
Note:	TSLPR is a glycoprotein with two major isoforms of 359 amino acids and 255 amino acids. In western blotting, bands may be visualized between 27 kD and ~50 kD.
Protein Families:	Druggable Genome, Secreted Protein, Transmembrane
Protein Pathways:	Cytokine-cytokine receptor interaction, Jak-STAT signaling pathway



[View online »](#)

Product images:

Immunohistochemistry-Paraffin: TSLP R/CRLF2 Antibody TA336941 - Formalin-fixed, paraffin-embedded normal human liver tissue (IMH-343) stained with CRLF2 antibody (5 ug/ml), peroxidase-conjugate and DAB chromogen.



Western Blot: TSLP R/CRLF2 Antibody TA336941 - Analysis of TSLPR in an A) partial recombinant protein (0.1 ug/ml), B) human muscle and C) liver lysate (2 ug/ml) using TSLPR antibody.