

Product datasheet for **TA336934**

TORC2 (CRTC2) Rabbit Polyclonal Antibody

Product data:

Product Type:	Primary Antibodies
Applications:	ICC/IF, IHC, Simple Western, WB
Recommended Dilution:	Immunohistochemistry: 1:100, Immunocytochemistry/ Immunofluorescence: 1:20 - 1:100, Western Blot: 1.0 - 2.0 ug/ml, Immunohistochemistry-Paraffin: 1:100, Simple Western: 1:100
Reactivity:	Human, Mouse
Host:	Rabbit
Clonality:	Polyclonal
Immunogen:	A synthetic peptide made to a C-terminal portion of the human Torc2 protein (between residues 600-693) [UniProt Q53ET0]
Formulation:	PBS, 0.05% Sodium Azide. Store at 4C short term. Aliquot and store at -20C long term. Avoid freeze-thaw cycles.
Concentration:	lot specific
Purification:	Immunogen affinity purified
Conjugation:	Unconjugated
Storage:	Store at -20°C as received.
Stability:	Stable for 12 months from date of receipt.
Gene Name:	CREB regulated transcription coactivator 2
Database Link:	NP_859066 Entrez Gene 74343 Mouse Entrez Gene 200186 Human Q53ET0



[View online »](#)

Background:

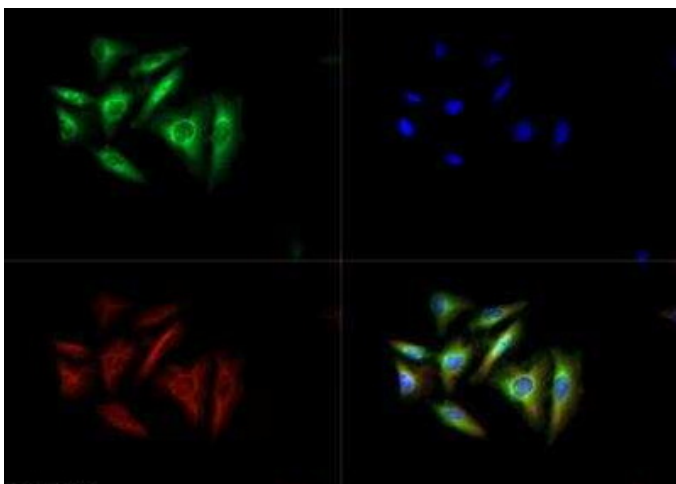
CREB-regulated transcription coactivator 2 (CRTC2), also known as transducer of regulated cAMP response element-binding protein 2, Torc2, or transducer of CREB protein 2, is a transcriptional coactivator for both CREB and the human T-cell leukemia virus type I (HTLV-1). In its dephosphorylated state, Torc2 becomes an activator in the SIK/TORC signaling pathway, and acts as a central regulator of cAMP dependent gluconeogenic gene expression in the LKB1/AMPK/TORC2 pathway. While Torc2 is normally found in the nucleus, it is translocated to the cytoplasm upon phosphorylation. Torc2 is abundantly expressed in the thymus but can also be found in the spleen, ovary, lung and muscle (where it acts as an inducer of mitochondrial biogenesis). Current research suggests that Torc2 responds to plasma membrane stress by facilitating changes in cellular lipid synthesis, thus altering the composition of the plasma membrane (PMID: 22504275). Other research indicates that Torc2 plays a role in regulating cancer cell migration, invasion, and metastasis (PMID: 21339740).

Synonyms:

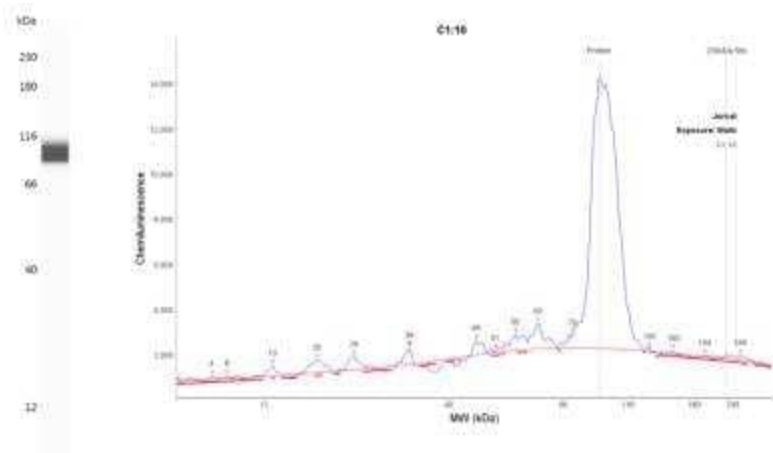
TORC-2; TORC2

Note:

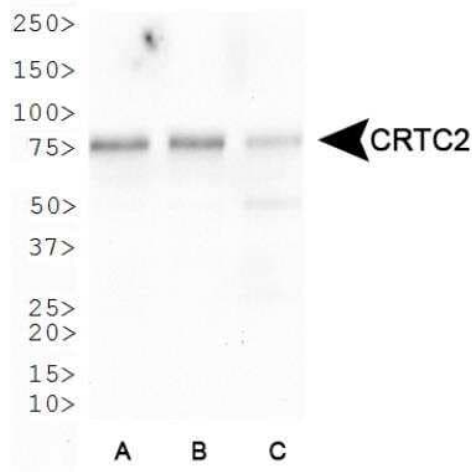
This Torc2 antibody is useful for Western blot, Immunocytochemistry/Immunofluorescence, and Immunohistochemistry on paraffin embedded sections. In Western blot a band was observed ~ 85 kDa. In ICC/IF cytoplasmic staining was observed in HeLa cells. Prior to immunostaining paraffin tissues, antigen retrieval with sodium citrate buffer (pH 6.0) is recommended.

Product images:

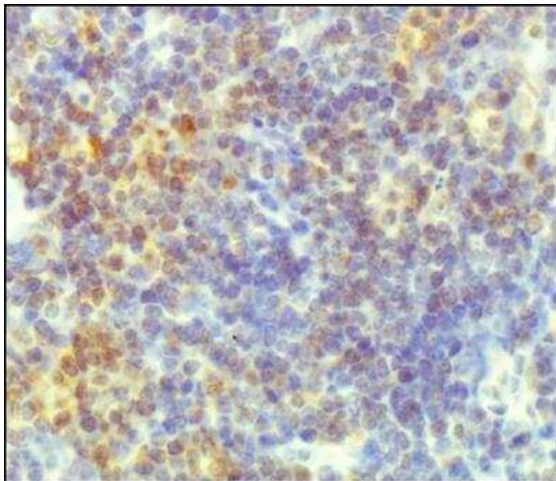
Immunocytochemistry/Immunofluorescence:
TORC2 Antibody TA336934 - Torc2 Antibody TA336934 - Torc2 antibody was tested in HeLa cells with DyLight 488 (green). Nuclei and alpha-tubulin were counterstained with DAPI (blue) and DyLight 550 (red).



Simple Western: TORC2 Antibody TA336934 - Lane view shows a specific band for TORC1 at a dilution of 1:100 in Jurkat cell lysate at 200 ug/mL. Electropherogram image of corresponding Simple Western lane view at WES molecular weight of 94 kDa. Image from an internal validation.



Western Blot: Torc2 Antibody TA336934 - Western blot analysis of Torc2 in A. Raji, B. Hek293 and C. Jurkat cell lysates.



Immunohistochemistry: Torc2 Antibody TA336934 - IHC staining of Torc2 in mouse thymus.