

Product datasheet for **TA336931**

IDH2 Rabbit Polyclonal Antibody

Product data:

Product Type:	Primary Antibodies
Applications:	ICC/IF, IHC, WB
Recommended Dilution:	Immunocytochemistry/ Immunofluorescence: 1:250 - 1:500, Immunohistochemistry-Paraffin: 1:100 - 1:500, Immunohistochemistry: 1:100 - 1:500, Western Blot: 1 - 2 ug/mL
Reactivity:	Human, Mouse, Rat
Host:	Rabbit
Clonality:	Polyclonal
Immunogen:	A synthetic peptide made to a C-terminal portion of the human IDH2 protein (between residues 375-452) [UniProt P48735].
Formulation:	PBS, 0.05% Sodium Azide. Store at 4C short term. Aliquot and store at -20C long term. Avoid freeze-thaw cycles.
Concentration:	lot specific
Purification:	Immunogen affinity purified
Conjugation:	Unconjugated
Storage:	Store at -20°C as received.
Stability:	Stable for 12 months from date of receipt.
Gene Name:	isocitrate dehydrogenase (NADP(+)) 2, mitochondrial
Database Link:	NP_002159 Entrez Gene 269951 Mouse Entrez Gene 361596 Rat Entrez Gene 3418 Human P48735

Background: Isocitrate dehydrogenase 2, also known as IDH, IDP, oxalosuccinate decarboxylase, IDPM, and mNADP-IDH, catalyzes the oxidative decarboxylation of isocitrate to 2-oxoglutarate. IDH2 is imperative for metabolic regulation and energy production, primarily via the citric acid cycle. In addition, IDH2 has been implicated in tight interactions with the pyruvate dehydrogenase complex. IDH2 is localized in the mitochondria and is found in stems, roots and leaves. Recent research has found that mutations in IDH2 can block histone demethylation and result in an inability for cells to differentiate in gliomas (PMID: 22343901). Further studies have also linked IDH2 to both gallbladder and bile duct cancer (PMID: 22180306).



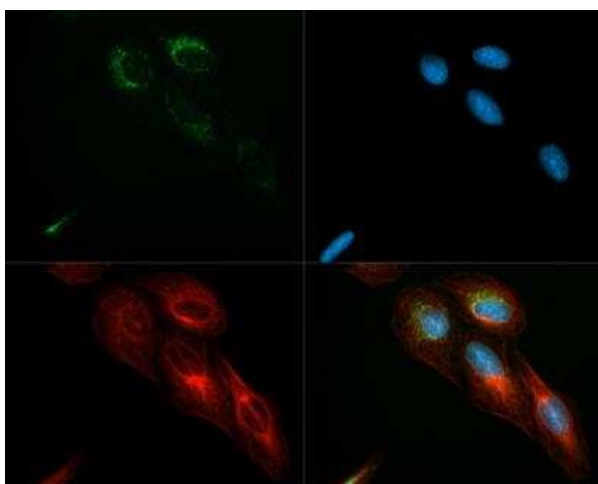
[View online »](#)

Synonyms: D2HGA2; ICD-M; IDH; IDHM; IDP; IDPM; mNADP-IDH

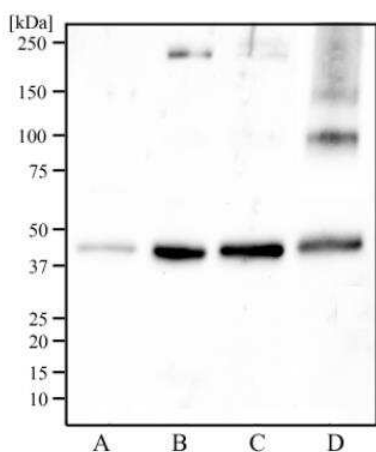
Note: This IDH2 antibody is useful for Western blot, Immunohistochemistry paraffin embedded sections and Immunocytochemistry/Immunofluorescence. In Western blot a band was observed ~48 kDa. In ICC/IF mitochondrial staining was observed in U2Os cells. Prior to immunostaining paraffin tissues, antigen retrieval with sodium citrate buffer (pH 6.0) is recommended.

Protein Pathways: Citrate cycle (TCA cycle), Glutathione metabolism, Metabolic pathways

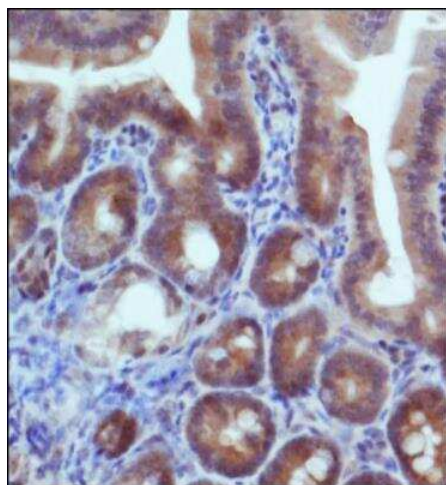
Product images:



Immunocytochemistry/Immunofluorescence: IDH2 Antibody TA336931 - IDH2 antibody was tested in U2OS cells with DyLight (green). Nuclei and alpha-tubulin were counterstained with DAPI (blue) and DyLight 550 (red).



Western Blot: IDH2 Antibody TA336931 - Analysis of Caki-1 cell lysate (A), human skeletal muscle tissue (B), mouse skeletal muscle tissue (C), and rat skeletal muscle tissue (D) using IDH2 antibody at a concentration of 2 ug/mL.



Immunohistochemistry: IDH2 Antibody TA336931
- Staining of IDH2 in mouse intestine.