

## Product datasheet for **TA336925**

### DNA PKcs (PRKDC) Mouse Monoclonal Antibody [Clone ID: 3H6]

#### Product data:

Product Type:	Primary Antibodies
Clone Name:	3H6
Applications:	ELISA, ICC/IF, IHC, WB
Recommended Dilution:	ELISA: 1:10000, Immunocytochemistry/ Immunofluorescence: 1:200-1:1000, Immunohistochemistry-Paraffin: 1:200-1:1000, Western Blot: 1:500-1:2000, Immunohistochemistry
Reactivity:	Human
Host:	Mouse
Isotype:	IgG1
Clonality:	Monoclonal
Immunogen:	Purified recombinant fragment of human DNA PKcs expressed in E. coli. [UniProt# P78527]
Formulation:	Preservative: 0.05% Sodium Azide. Aliquot and store at -20C or -80C. Avoid freeze-thaw cycles.
Concentration:	lot specific
Purification:	Ascites
Conjugation:	Unconjugated
Storage:	Store at -20°C as received.
Stability:	Stable for 12 months from date of receipt.
Predicted Protein Size:	460 kDa
Gene Name:	protein kinase, DNA-activated, catalytic polypeptide
Database Link:	<a href="#">NP_001075109</a> <a href="#">Entrez Gene 5591 Human P78527</a>
Background:	The PRKDC gene encodes the catalytic subunit of a nuclear DNA-dependent serine/threonine protein kinase (DNA-PK). The second component is the autoimmune antigen Ku (MIM 152690), which is encoded by the G22P1 gene on chromosome 22q. On its own, the catalytic subunit of DNA-PK is inactive and relies on the G22P1 component to direct it to the DNA and trigger its kinase activity; PRKDC must be bound to DNA to express its catalytic properties.



[View online »](#)

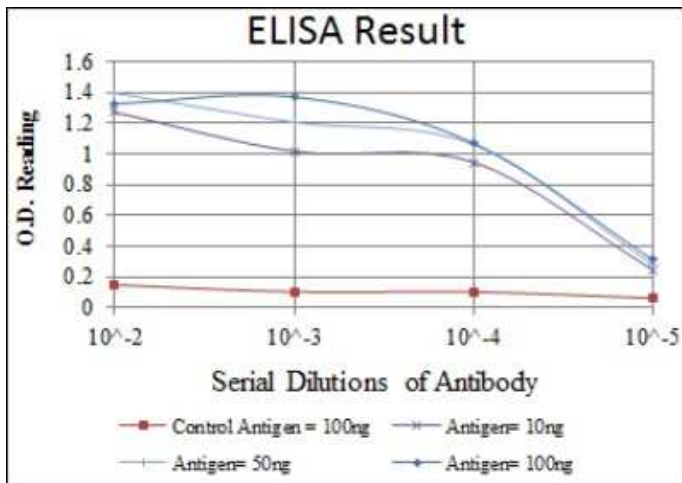
**Synonyms:** DNA-PKcs; DNAPK; DNPk1; HYRC; HYRC1; IMD26; p350; XRCC7

**Note:** This DNA PKcs (3H6) antibody is useful for Western blot, Immunohistochemistry on paraffin-embedded sections, Immunocytochemistry/Immunofluorescence and ELISA. In WB, a band can be seen at 460-470 kDa representing DNA PKcs.

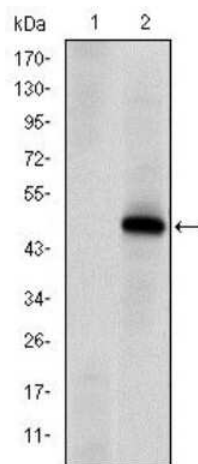
**Protein Families:** Druggable Genome, Protein Kinase

**Protein Pathways:** Cell cycle, Non-homologous end-joining

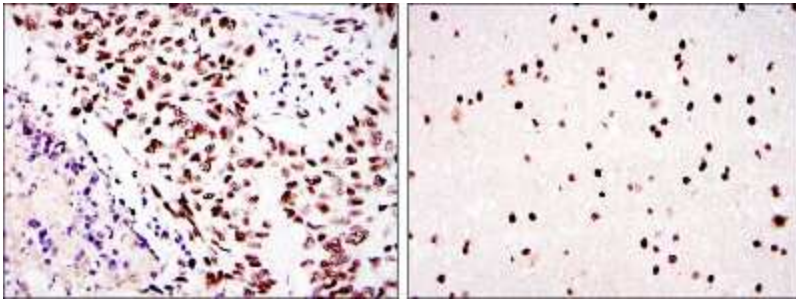
**Product images:**



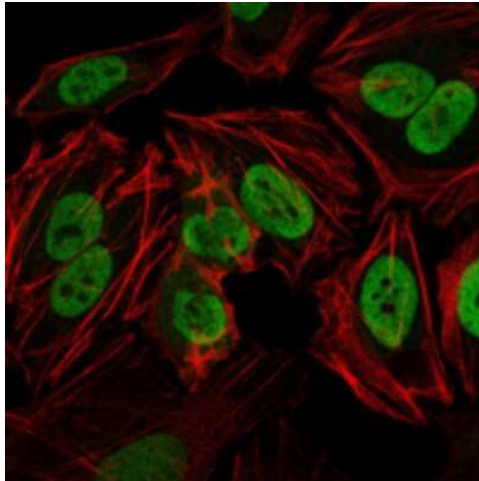
ELISA: DNA-PKcs Antibody (3H6) TA336925 - Red: Control Antigen (100ng), Purple: Antigen (10ng), Green: Antigen (50ng), Blue: Antigen (100ng).



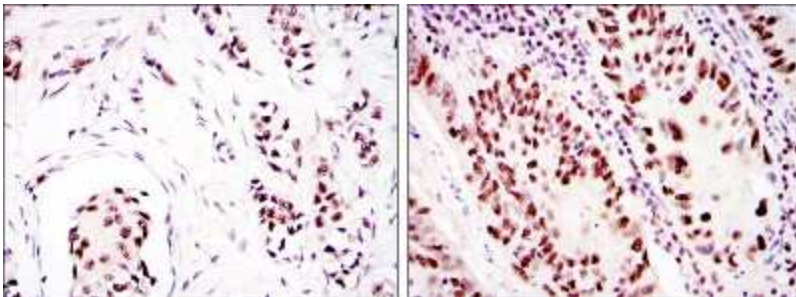
Western Blot: DNA-PKcs Antibody (3H6) TA336925 - Analysis using DNA PKcs mAb against HEK293 (1) and DNA PKcs(AA: 2638-2971)-hlgGfC transfected HEK293 (2) cell lysates.



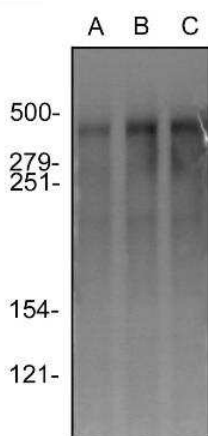
Immunohistochemistry-Paraffin: DNA-PKcs Antibody (3H6) TA336925 - Analysis of paraffin-embedded lung cancer (left) and brain tissues (right) using DNA PKcs mouse mAb with DAB staining.



Immunocytochemistry/Immunofluorescence: DNA-PKcs Antibody (3H6) TA336925 - Analysis of HeLa cells using DNA PKcs mouse mAb (green). Actin filaments have been labeled with Alexa Fluor-555 phalloidin (red).



Immunohistochemistry-Paraffin: DNA-PKcs Antibody (3H6) TA336925 - Analysis of paraffin-embedded breast cancer (left) and colon cancer (right) using DNA PKcs mouse mAb with DAB staining.



Western Blot: DNA-PKcs Antibody (3H6) TA336925 - HeLa (A), MCF7 (B) and HEK293 (C) whole cell protein was separated by SDS-PAGE on 6% gel, transferred to PVDF and probed with TA336925. A single band of DNA PKcs reactivity at approximately 460 kDa was detected in all lysates.