

Product datasheet for **TA336916**

YAP1 Mouse Monoclonal Antibody [Clone ID: 1A12]

Product data:

Product Type:	Primary Antibodies
Clone Name:	1A12
Applications:	ELISA, FC, ICC/IF, IHC, IP, WB
Recommended Dilution:	Knockdown Validated, Immunoprecipitation, Immunocytochemistry/ Immunofluorescence: 1-5 ug/mL, Simple Western: 20 ug/mL, ELISA: 1:10000, Immunohistochemistry, Knockout Validated, Western Blot: 1:500-1:2000, Flow Cytometry: 1:200-1:400, Immunohistochemistry-Paraffin: 1:200-1:1000
Reactivity:	Human
Host:	Mouse
Isotype:	IgG1
Clonality:	Monoclonal
Immunogen:	Purified recombinant fragment of human YAP1 expressed in E. coli. [UniProt# P46937]
Formulation:	PBS, 0.03% Sodium Azide. Store at 4C short term. Aliquot and store at -20C long term. Avoid freeze-thaw cycles.
Concentration:	lot specific
Purification:	Ammonium sulfate precipitation
Conjugation:	Unconjugated
Storage:	Store at -20°C as received.
Stability:	Stable for 12 months from date of receipt.
Gene Name:	Yes associated protein 1
Database Link:	NP_006097 Entrez Gene 10413 Human P46937
Background:	This gene encodes the human ortholog of chicken YAP protein which binds to the SH3 domain of the Yes proto-oncogene product. This protein contains a WW domain that is found in various structural, regulatory and signaling molecules in yeast, nematode, and mammals, and may be involved in protein-protein interaction.
Synonyms:	COB1; YAP; YAP2; YAP65; YKI

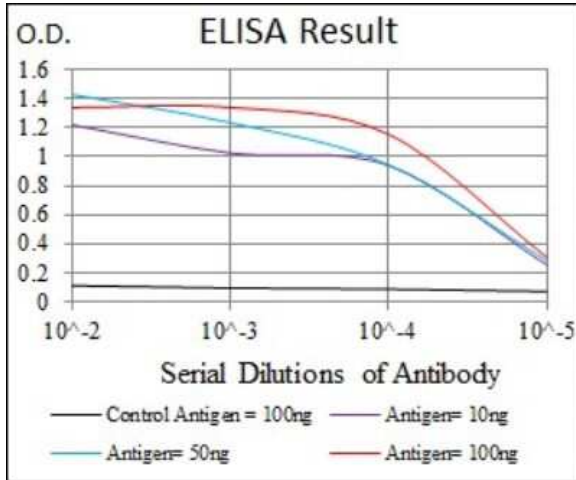


[View online »](#)

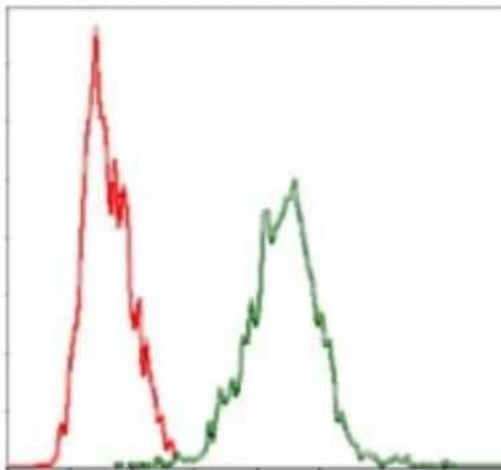
Note: This YAP1 (1A12) antibody is useful for Western blot, Immunohistochemistry on paraffin-embedded sections, Flow Cytometry and ELISA.

Protein Families: Druggable Genome

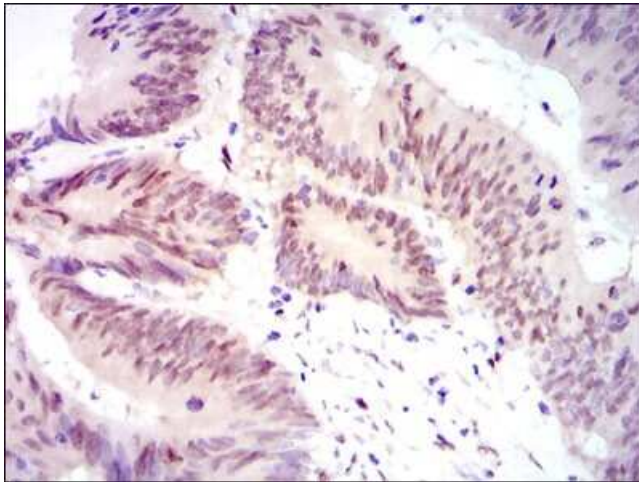
Product images:



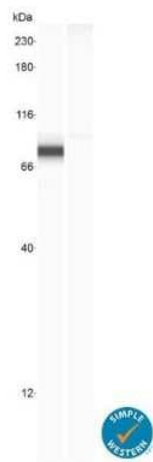
ELISA: YAP1 Antibody (1A12) TA336916 - Red: Control Antigen (100 ng); Purple: Antigen (10 ng); Green: Antigen (50 ng); Blue: Antigen (100 ng). Dilution 1:10000.



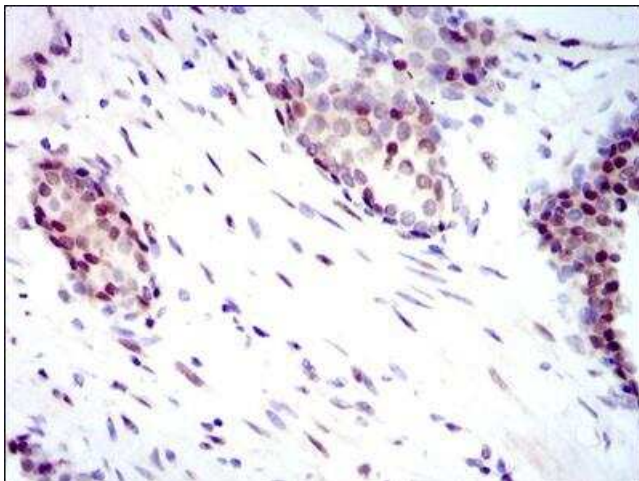
Flow Cytometry: YAP1 Antibody (1A12) TA336916 - Analysis of HeLa cells using YAP1 mouse mAb (green) and negative control (red). Dilution 1:200 - 1:400.



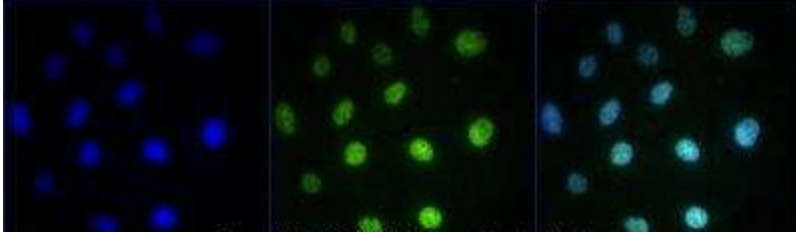
Immunohistochemistry-Paraffin: YAP1 Antibody (1A12) TA336916 - Analysis of paraffin-embedded rectum cancer tissues using YAP1 mouse mAb with DAB staining. 1:200 - 1:1000



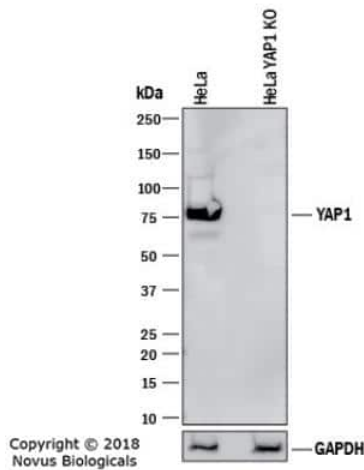
Knockout Validated: YAP1 Antibody (1A12) TA336916 - Lysates of HeLa human cervical epithelial carcinoma parental cell line and YAP1 knockout (KO) HeLa cell line. A specific band was detected for YAP1 at approximately 81 kDa (as indicated) using 20 ug/mL of mouse Anti-YAP1 Monoclonal Antibody (Catalog # TA336916). This experiment was conducted under reducing conditions and using the 12-230 kDa separation system.



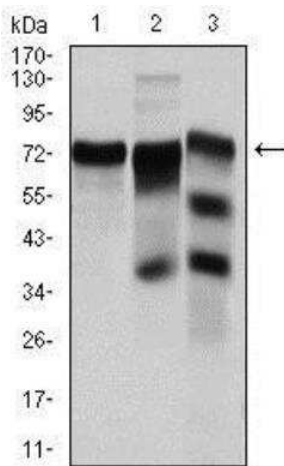
Immunohistochemistry-Paraffin: YAP1 Antibody (1A12) TA336916 - Analysis of paraffin-embedded prostate cancer tissues using YAP1 mouse mAb with DAB staining. 1:200 - 1:1000



Immunocytochemistry/Immunofluorescence: YAP1 Antibody (1A12) - BSA Free TA336916 - Caco-2 cells were fixed in 4% paraformaldehyde for 10 minutes and permeabilized in 0.5% Triton X-100 in PBS for 5 minutes. The cells were incubated with YAP1 Antibody [1A12] (TA336916) at 1 ug/ml overnight at 4C and detected with an anti-mouse DyLight 488 (Green) at a 1:1000 dilution for 60 minutes. Nuclei were counterstained with DAPI (Blue). Cells were imaged using a 40X objective.



Knockout Validated: YAP1 Antibody (1A12) TA336916 - Lysates of HeLa human cervical epithelial carcinoma parental cell line and YAP1 knockout (KO) HeLa cell line. PVDF membrane was probed with 1:500 of Mouse Anti-Human YAP1 Monoclonal Antibody (Catalog # TA336916) followed by HRP-conjugated Anti-Mouse IgG Secondary Antibody (Catalog # HAF018). Specific band was detected for YAP1 at approximately 75 kDa (as indicated) in the parental HeLa cell line, but is not detectable in the knockout HeLa cell line. This experiment was conducted under reducing conditions.



Western Blot: YAP1 Antibody (1A12) TA336916 - Analysis using YAP1 mouse mAb against HeLa (1), C6 (2) and Cos7 (3) cell lysate. Dilution 1:500 - 1:2000.