

## Product datasheet for **TA336909**

### TCCR (IL27RA) Mouse Monoclonal Antibody [Clone ID: 34N4G11]

#### Product data:

Product Type:	Primary Antibodies
Clone Name:	34N4G11
Applications:	CyTOF-ready, FC, IHC
Recommended Dilution:	Flow (Cell Surface): 1 ug/ml, Immunohistochemistry: 1:10-1:500, Flow Cytometry: 1 ug/ml, Immunohistochemistry-Paraffin: 5 ug/ml, CyTOF-ready
Reactivity:	Human
Host:	Mouse
Isotype:	IgG2b, kappa
Clonality:	Monoclonal
Immunogen:	A portion of amino acids 200-250 of human IL-27R (WSX-1) was used as the immunogen for this antibody.
Formulation:	PBS containing 0.05% BSA, 0.05% Sodium Azide. Store at 4C short term. Aliquot and store at -20C long term. Avoid freeze-thaw cycles.
Concentration:	lot specific
Purification:	Protein G purified
Conjugation:	Unconjugated
Storage:	Store at -20°C as received.
Stability:	Stable for 12 months from date of receipt.
Gene Name:	interleukin 27 receptor subunit alpha
Database Link:	<a href="#">NP_004834</a> <a href="#">Entrez Gene 9466 Human</a> <a href="#">Q6UWB1</a>



[View online »](#)

**Background:**

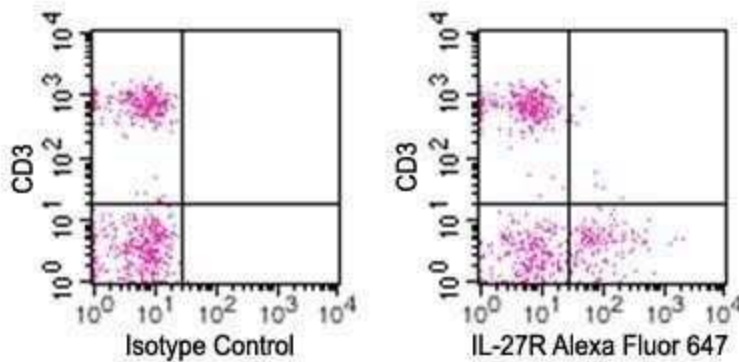
The IL-27 Receptor complex includes WSX-1 and gp130. IL-27R (WSX-1) is 65-70 kDa protein and is highly expressed in lymphoid tissues such as spleen, lymph nodes and peripheral blood leukocytes including CD4+ and CD8+ T cells, monocytes, DCs and NK cells (1-3). IL-27R activation includes STAT1, STAT3, STAT4 and STAT5, leading to differing pathway dependent effector activities. Like the IL12/IL-12R complex, the IL-27/IL-27R complex also has Th1 enhancing activity especially enhancement of IFN $\gamma$  production by naive T cells and NK cells (1). IL-27R mediates downregulation of Th2 activity by findings that IL-27R deficiencies mitigate inflammatory pathology in helminthic infections in mice (1, 4, 5). The possibility of utilizing IL-27R as a target for autoimmune inflammatory diseases, especially of mucosal surfaces as in human IBD, is under investigation, measured by Th2 type cytokines and bolstered through Th2

**Synonyms:**

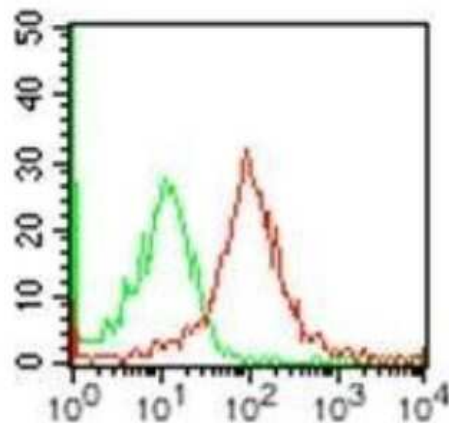
CRL1; IL-27RA; IL27R; TCCR; WSX1; zcytor1

**Protein Families:**

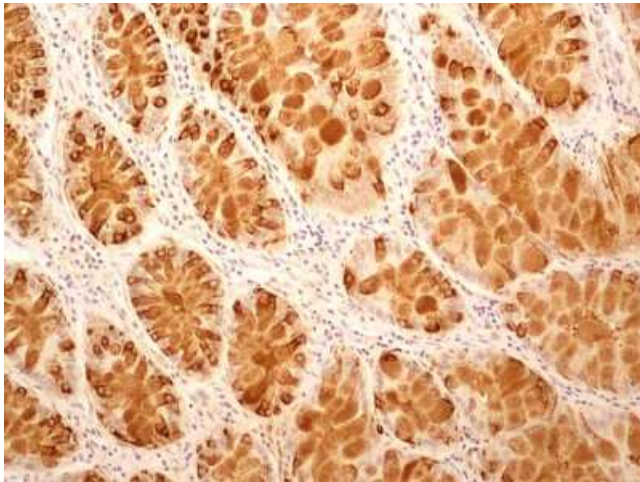
Druggable Genome, Transmembrane

**Product images:**


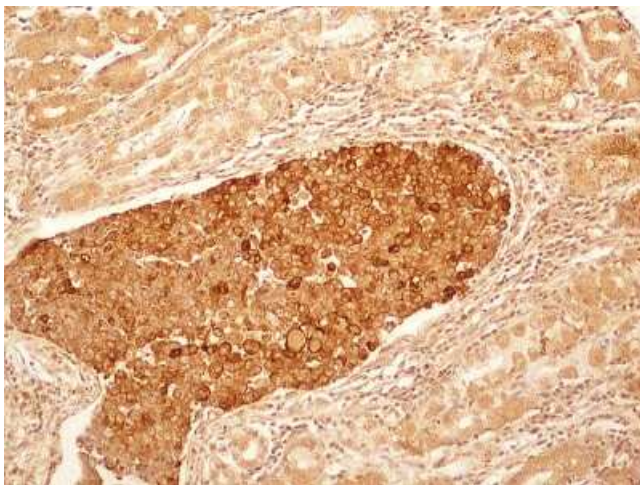
Flow (Cell Surface): IL-27 R alpha/WSX-1/TCCR Antibody (34N4G11) TA336909 - Analysis using the Alexa Fluor (R) 647 conjugate of TA336909. Surface staining of IL27R on freshly isolated (PPI negative) human PBMCs using IL-27R antibody and CD3 antibody at 10 ul/10<sup>6</sup> cells. Flow kit, mouse IgG2b isotype control antibody, and RBC lysis buffer were used for this test.



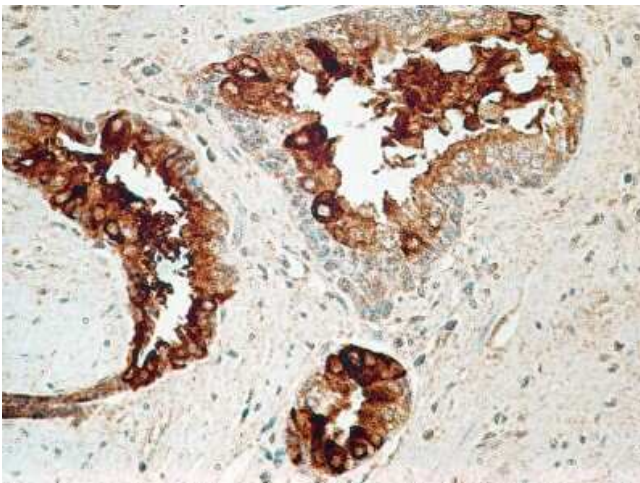
Flow Cytometry: IL-27 R alpha/WSX-1/TCCR Antibody (34N4G11) TA336909 - Surface staining on human peripheral blood monocytes using IL-27R antibody at 1 ug/10<sup>6</sup> cells (red represents specific antibody and green represents isotype control). APC-conjugated goat anti-mouse Ig F(ab')<sub>2</sub> secondary antibody, CS flow kit and an FcR block were used for this test.



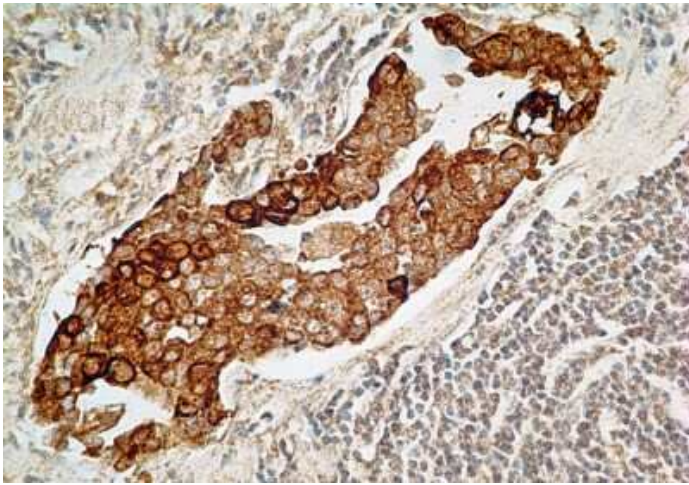
Immunohistochemistry-Paraffin: IL-27 R alpha/WSX-1/TCCR Antibody (34N4G11) TA336909 - IHC-P detection of IL27RA protein in a section of human colo-rectal cancer tissue using IL27RA antibody (34N4G11) at a concentration of 5ug/ml. The cancer cells showed specific positivity for IL27RA and the staining intensity was more towards the cellular membranes. The tumor stroma was largely negative for staining.



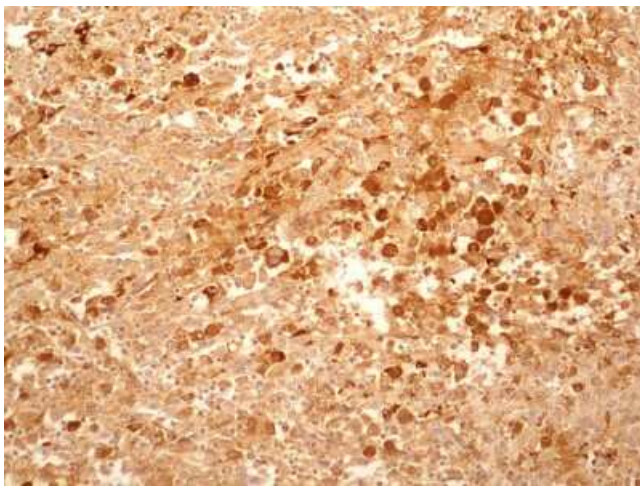
Immunohistochemistry-Paraffin: IL-27 R alpha/WSX-1/TCCR Antibody (34N4G11) TA336909 - IHC-P detection of IL27RA protein in a section of human stomach cancer tissue using IL27RA antibody (34N4G11) at a concentration of 5ug/ml. The cancer cells showed intense membrane-cytoplasmic positivity for IL27RA protein, whereas, the glands in adjacent area and the associated stroma developed distinctly weak staining.



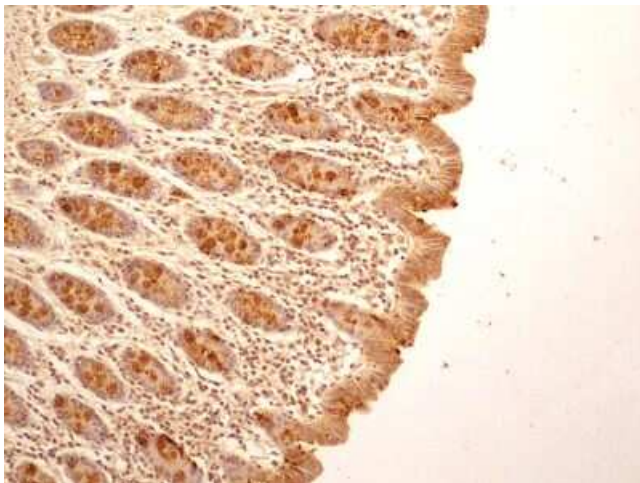
Immunohistochemistry-Paraffin: IL-27 R alpha/WSX-1/TCCR Antibody (34N4G11) TA336909 - FFPE human prostate probed with IL-27R antibody at 5 ug/ml.



Immunohistochemistry-Paraffin: IL-27 R alpha/WSX-1/TCCR Antibody (34N4G11) TA336909 - Adenocarcinoma of the stomach probed with IL-27R antibody at 5 ug/ml.



Immunohistochemistry-Paraffin: IL-27 R alpha/WSX-1/TCCR Antibody (34N4G11) TA336909 - IHC-P detection of IL27RA protein in a section of human renal/kidney cancer tissue using IL27RA antibody (34N4G11) at a concentration of 5ug/ml. The representative image shows membrane-cytoplasmic positivity for IL27RA protein in the cancer cells.



Immunohistochemistry-Paraffin: IL-27 R alpha/WSX-1/TCCR Antibody (34N4G11) TA336909 - IHC-P detection of IL27RA protein in a section of normal human colon tissue using IL27RA antibody (34N4G11) at a concentration of 5ug/ml. Intense membrane with cytoplasmic staining was observed in the cells of crypts and the absorptive columnar epithelium.