

Product datasheet for **TA336907**

CD161 (KLRB1) Mouse Monoclonal Antibody [Clone ID: 14F1F11]

Product data:

Product Type:	Primary Antibodies
Clone Name:	14F1F11
Applications:	IHC, WB
Recommended Dilution:	Immunohistochemistry-Paraffin: 5 ug/ml, Immunohistochemistry, Western Blot: 1-5 ug/ml
Reactivity:	Human
Host:	Mouse
Isotype:	IgG1, kappa
Clonality:	Monoclonal
Immunogen:	Amino acids 68-225 of human CD161 were used as the immunogen for this antibody.
Formulation:	PBS containing 0.05% BSA, 0.05% Sodium Azide. Store at 4C short term. Aliquot and store at -20C long term. Avoid freeze-thaw cycles.
Concentration:	lot specific
Purification:	Protein G purified
Conjugation:	Unconjugated
Storage:	Store at -20°C as received.
Stability:	Stable for 12 months from date of receipt.
Gene Name:	killer cell lectin like receptor B1
Database Link:	NP_002249 Entrez Gene 3820 Human Q12918



[View online »](#)

Background:

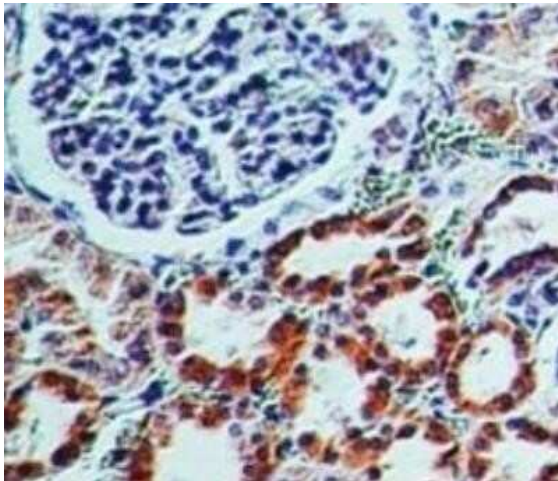
CD161 is a C-Type Lectin Receptor, also known as NKR-P1A, previously found on NKT cells and subsets of T-cells. Phenotyping of cells that are functionally producing IL-17 has shown the one constant marker is CD161. While it had been shown previously that human CD4+ cells that produce both IL-17 and IFN γ give rise to Th17/Th1 cells, indicating common etiology of these two T cell subsets, a clear marker for cells producing IL-17 is CD161. In fact, all cells characterized as the following subsets CD4+TCRab+, CD8+TCRab+, CD4-CD8-TCRab+, and CD4-CD8-TCRgd+ bearing CD161 also produce IL-17 but cells of these same phenotypes and functional marker which do not bear CD161 also do not produce IL-17. Induction of CD161 expression by transduction with RORC also induces IL-1R and IL-23R as well as the ability to produce IL-17. The ability to produce IL-17 and the induction of CD161 shows a strong dependency for RORC. Antibody to CD161 provides a probe for identifying IL-17 producing cells and offers a finer delineation of additional subsets derived from Th17 and their functional characteristics through cytokine mRNA expression or production.

Synonyms:

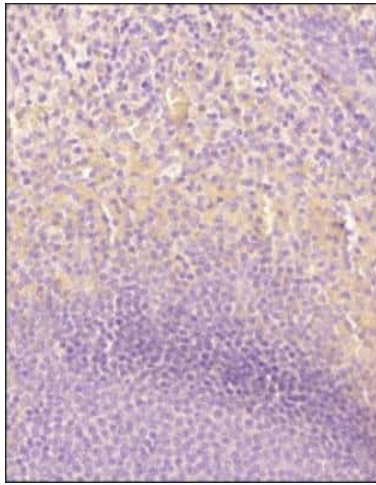
CD161; CLEC5B; hNKR-P1A; NKR; NKR-P1; NKR-P1A; NKRP1A

Protein Families:

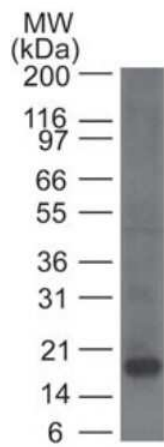
Transmembrane

Product images:

Immunohistochemistry-Paraffin: CD161 Antibody (14F1F11) TA336907 - Analysis using Azide Free version of TA336907. CD161 in human kidney using CD161 antibody at 5 ug/ml.



Immunohistochemistry-Paraffin: CD161 Antibody (14F1F11) - BSA Free TA336907 - Analysis of a FFPE tissue section of human spleen using 1:200 dilution of CD161 [14F1F11] antibody. The staining was developed using HRP labeled anti-rabbit secondary antibody and DAB reagent, and nuclei of cells were counter-stained with hematoxylin.



Western Blot: CD161 Antibody (14F1F11) TA336907 - Analysis of a partial CD161 recombinant protein using CD161 antibody at 1 ug/ml.