

Product datasheet for **TA336894**

CDR2 Mouse Monoclonal Antibody [Clone ID: 33]

Product data:

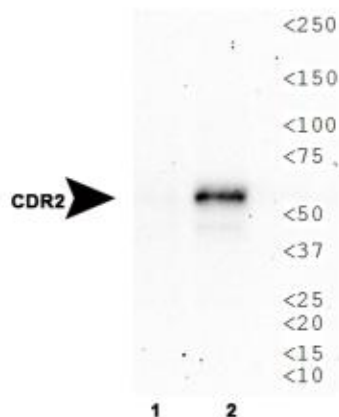
Product Type:	Primary Antibodies
Clone Name:	33
Applications:	IHC, WB
Recommended Dilution:	WB: 1:500-1:1000, ELISA: 1:100-1:2000, IHC: 1:50-1:100, IHC-P: 1:50-1:100, IP: 1:10-1:100
Reactivity:	Human (Does not react with: Mouse)
Host:	Mouse
Isotype:	IgG1
Clonality:	Monoclonal
Immunogen:	N-terminal MBP-tagged full length human CDR2 [Swiss-Prot # Q01850]
Formulation:	PBS containing 0.05% BSA, 0.05% Sodium Azide. Store at 4C short term. Aliquot and store at -20C long term. Avoid freeze-thaw cycles.
Concentration:	lot specific
Purification:	Protein G purified
Conjugation:	Unconjugated
Storage:	Store at -20°C as received.
Stability:	Stable for 12 months from date of receipt.
Gene Name:	cerebellar degeneration related protein 2
Database Link:	NP_001793 Entrez Gene 12585 Mouse Entrez Gene 1039 Human Q01850
Background:	CDR2, also known as cerebellar degeneration-related protein 2 and Yo, is a tumor antigen which has been linked to a rare disorder known as Paraneoplastic cerebellar degeneration (PCD). CDR2 is expressed in a high percentage of ovary and breast tumors and has been shown as the target antigen of a naturally occurring tumor immune response in PCD patients. Additionally, a connection has been reported between CDR2 and attenuation of tumor hypoxia signaling in the papillary subtype of renal cell carcinoma (Balamurugan K et al., 2009).
Synonyms:	CDR62; Yo



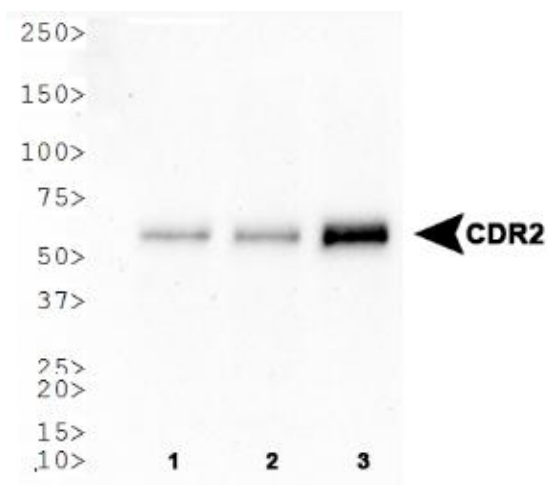
[View online »](#)

Note: This CDR2 Antibody (33) is useful for Western blot, Immunoprecipitation, Immunohistochemistry on paraffin-embedded sections and ELISA. In Western blot, a single or double band can be seen around 55 kDa representing CDR2. In IHC-P, heavy nuclear staining was observed with some cytoplasmic signal in human breast cancer. Prior to immunostaining paraffin tissues, antigen retrieval with sodium citrate buffer (pH 6.0) is recommended.

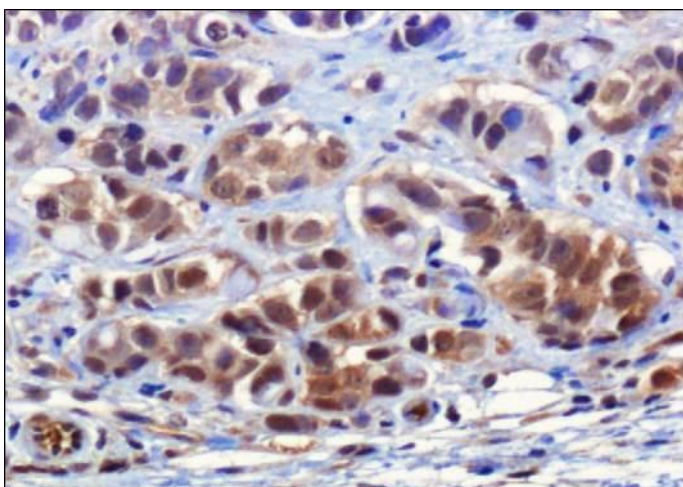
Product images:



Western Blot: CDR2 Antibody (33) TA336894 - Western blot analysis of CDR2 expression in 1) HeLa control cell lysate and 2) HeLa cell lysate overexpressing CDR2.



Western Blot: CDR2 Antibody (33) TA336894 - Western blot analysis of CDR2 expression in 1) HeLa, 2) NTERA-2 and 3) HepG2 whole cell lysates.



Immunohistochemistry: CDR2 Antibody (33)
TA336894 - IHC staining of CDR2 in human breast
cancer using DAB with hematoxylin counterstain.