

Product datasheet for **TA336891**

DNMT3A Rabbit Polyclonal Antibody

Product data:

Product Type:	Primary Antibodies
Applications:	WB
Recommended Dilution:	WB: 3 - 5ug/ml
Reactivity:	Human
Host:	Rabbit
Clonality:	Polyclonal
Immunogen:	This antibody was developed against synthetic peptides corresponding to areas around amino acids 125-175 and another around 175-225 of Dnmt3a.
Formulation:	PBS containing 0.05% BSA, 0.05% Sodium Azide. Store at 4C short term. Aliquot and store at -20C long term. Avoid freeze-thaw cycles.
Concentration:	lot specific
Purification:	Protein G purified
Conjugation:	Unconjugated
Storage:	Store at -20°C as received.
Stability:	Stable for 12 months from date of receipt.
Gene Name:	DNA (cytosine-5-)-methyltransferase 3 alpha
Database Link:	NP_783328 Entrez Gene 1788 Human Q9Y6K1



[View online »](#)

Background:

Methylation of DNA at cytosine residues plays an important role in regulation of gene expression, genomic imprinting and is essential for mammalian development. Hypermethylation of CpG islands in tumor suppressor genes or hypomethylation of bulk genomic DNA may be linked with development of cancer. To date, 3 families of mammalian DNA methyltransferase genes have been identified which include Dnmt1, Dnmt2 and Dnmt3. Dnmt1 is constitutively expressed in proliferating cells and inactivation of this gene causes global demethylation of genomic DNA and embryonic lethality. Dnmt2 is expressed at low levels in adult tissues and its inactivation does not affect DNA methylation or maintenance of methylation. The Dnmt3 family members, Dnmt3a and Dnmt3b, are strongly expressed in ES cells but their expression is down regulated in differentiating ES cells and is low in adult somatic tissue. Recently, it has been shown that naturally occurring mutations of Dnmt3b gene occurs in patients with a rare autosomal recessive disorder, termed ICF (immunodeficiency, centromeric instability, and facial anomalies) syndrome.

Synonyms:

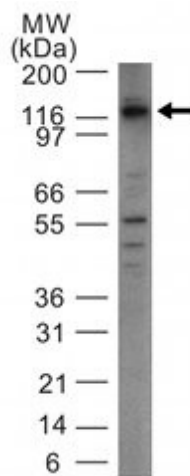
DNMT3A2; M.HsaIIIA; TBRS

Protein Families:

Druggable Genome

Protein Pathways:

Cysteine and methionine metabolism, Metabolic pathways

Product images:

Western Blot: Dnmt3a Antibody TA336891 - analysis using Dnmt3a antibody at 5 ug/ml with Dnmt3a transfected 293 cell lysate.