

Product datasheet for **TA336875**

MMP7 Rabbit Polyclonal Antibody

Product data:

Product Type:	Primary Antibodies
Applications:	IHC
Recommended Dilution:	Immunohistochemistry: 1:300, Immunohistochemistry-Paraffin: 1:300
Reactivity:	Human, Mouse
Host:	Rabbit
Clonality:	Polyclonal
Immunogen:	A synthetic peptide made to an internal portion of the human MMP7 protein (between residues 250-300) [UniProt P09237]
Formulation:	Store at 4C short term. Aliquot and store at -20C long term. Avoid freeze-thaw cycles.
Concentration:	lot specific
Purification:	Affinity purified
Conjugation:	Unconjugated
Storage:	Store at -20°C as received.
Stability:	Stable for 12 months from date of receipt.
Gene Name:	matrix metalloproteinase 7
Database Link:	NP_002414 Entrez Gene 17393 Mouse Entrez Gene 4316 Human P09237

Background: Matrix Metalloproteinases (MMPs) belong to a family of proteases that are essential for the breakdown of extracellular matrix (ECM). They are important in tumor cell growth, invasion, and metastasis, as well as angiogenesis, wound healing, and apoptosis. Most MMPs contain common domain structures that include a signal sequence, a propeptide, a catalytic domain, and a hemopexin like (Hpx) domain. Matrix metalloproteinase-7 (MMP7), also known as Matrilysin, belongs to the peptidase M10A family, and is responsible for hydrolyzing proteoglycans and ECM glycoproteins. MMP7 will activate procollagenase while degrading gelatin types I, III, IV, and V, and casein. In addition, MMP7 is expressed in normal and cancer cells, specifically glandular epithelial cells and pancreatic carcinoma. Research suggests that MMP7 may play an important role in the early stages of tumor progression.



[View online »](#)

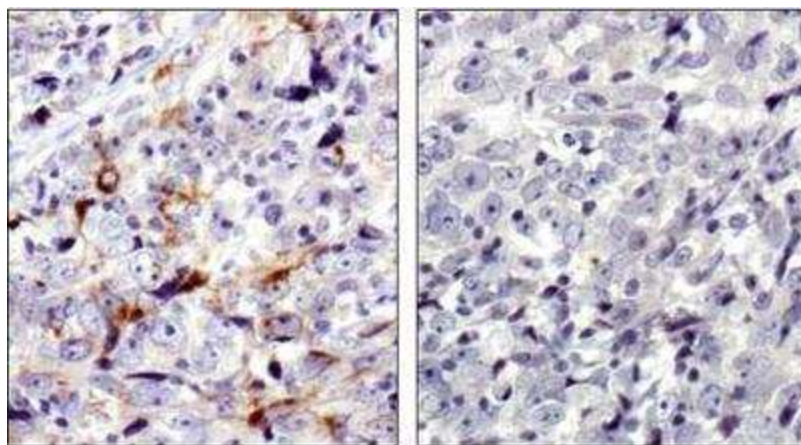
Synonyms: MMP-7; MPSL1; PUMP-1

Note: This MMP7 antibody is useful for Immunohistochemistry-paraffin embedded sections, where staining is seen in the extracellular matrix of human breast cancer. Prior to immunostaining paraffin tissues, antigen retrieval with sodium citrate buffer (pH 6.0) is recommended.

Protein Families: Druggable Genome, Protease

Protein Pathways: Wnt signaling pathway

Product images:



Immunohistochemistry: MMP-7 Antibody TA336875 - MMP7 antibody was tested in human breast cancer using DAB with hematoxylin counterstain. The image on the right had the antibody blocked by preincubation with immunizing peptide.