

Product datasheet for **TA336874**

PIF1 Rabbit Polyclonal Antibody

Product data:

Product Type:	Primary Antibodies
Applications:	IF, IHC, WB
Recommended Dilution:	Immunohistochemistry: 1:300, Immunohistochemistry-Paraffin: 1:300, Western Blot (Negative), ICC/IF (Negative)
Reactivity:	Mouse
Host:	Rabbit
Clonality:	Polyclonal
Immunogen:	A synthetic peptide made to an internal portion of the human PIF1 protein (between residues 400-500) [UniProt Q9H611]
Formulation:	PBS with 30% Glycerol, 0.05% Sodium Azide. Store at 4C short term. Aliquot and store at -20C long term. Avoid freeze-thaw cycles.
Concentration:	lot specific
Purification:	Affinity purified
Conjugation:	Unconjugated
Storage:	Store at -20°C as received.
Stability:	Stable for 12 months from date of receipt.
Gene Name:	PIF1 5'-to-3' DNA helicase
Database Link:	NP_079325 Entrez Gene 208084 Mouse Q9H611

Background: PIF1 (pre-implantation factor, PIF1 5'-to-3' DNA helicase homolog, PIF, PIF1/RRM3 DNA helicase-like protein, C15orf20) is a member of the helicase family associated with embryo association with the uterus. PIF1 is also a DNA dependent ATPase that negatively regulates telomerase, the reverse transcriptase that affects telomere length (PMID 16522649). PIF1 is expressed in the nucleus in the late S/G2 phase and is carefully regulated by the cell cycle. In human tumor cells, the deletion of the PIF1 gene reduces the survival of both the p53-deficient and p53-proficient cells by initiating apoptosis by blocking S-phase entry and progression (PMID 21616935). Acting as a G4 resolvase, PIF1 prevents the formation of G4 (G-quadruplex) structures by stabilizing DNA sequences (PMID 20524933).

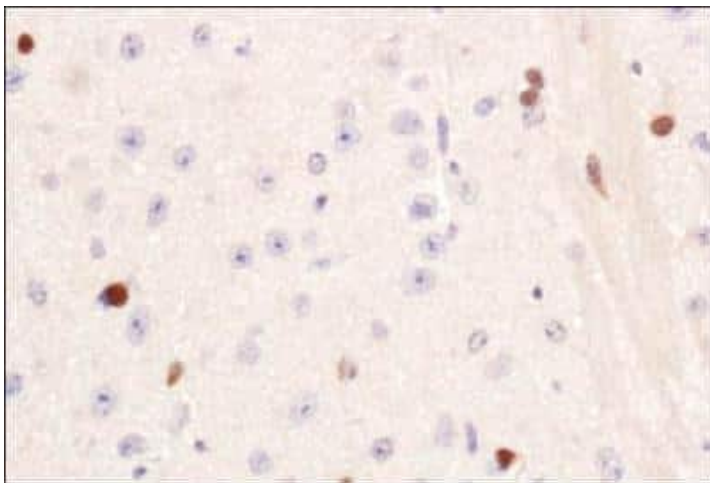


[View online »](#)

Synonyms: C15orf20; PIF

Note: This PIF1 antibody is useful for IHC-paraffin embedded sections, staining was observed in the nucleus of mouse brain tissue. Prior to immunostaining paraffin tissues, antigen retrieval with sodium citrate buffer (pH 6.0) is recommended. This antibody is not applicable for Western Blot or ICC/IF.

Product images:



Immunohistochemistry: PIF1 Antibody TA336874
- IHC analysis of PIF1 in mouse brain using DAB
with hematoxylin counterstain.