

## Product datasheet for **TA336869**

### SUV420h1 (KMT5B) Rabbit Polyclonal Antibody

#### Product data:

Product Type:	Primary Antibodies
Applications:	FC, ICC/IF, IHC, WB
Recommended Dilution:	Immunohistochemistry: 1:200, Immunocytochemistry/ Immunofluorescence: 1:100, Immunohistochemistry-Paraffin: 1:200, Western Blot (Negative), Flow Cytometry: 2-5 ug/ml
Reactivity:	Human, Mouse
Host:	Rabbit
Clonality:	Polyclonal
Immunogen:	A synthetic peptide made to an internal portion of the human SUV420h1 protein (between residues 450-500) [UniProt Q4FZB7]
Formulation:	PBS with 30% Glycerol, 0.05% Sodium Azide. Store at 4C short term. Aliquot and store at -20C long term. Avoid freeze-thaw cycles.
Concentration:	lot specific
Purification:	Affinity purified
Conjugation:	Unconjugated
Storage:	Store at -20°C as received.
Stability:	Stable for 12 months from date of receipt.
Gene Name:	lysine methyltransferase 5B
Database Link:	<a href="#">NP_060105</a> <a href="#">Entrez Gene 225888 Mouse</a> <a href="#">Entrez Gene 51111 Human</a> <a href="#">Q4FZB7</a>

**Background:** SUV420H1 (Histone-lysine N-methyltransferase 5B, KMT5B) is a histone methyltransferase that specifically di- and trimethylates lysine 20 of H4 (H4 K20Me3), an epigenetic mark of transcriptional repression. This mark, along with trimethylation of histone 3 lysine 9 (H3 K9me3) and monomethylation of H3 lysine 27 (H3 K27me1), define genomic regions of constitutive heterochromatin that are poor in activated genes. This enzyme is essential for development, with Suv420h1 knockout mice proving lethal perinatally and showing overall growth retardation. The RB1 family of proteins have been shown to interact with, and target, KMT5B to histones, enabling the enzyme to function.



[View online »](#)

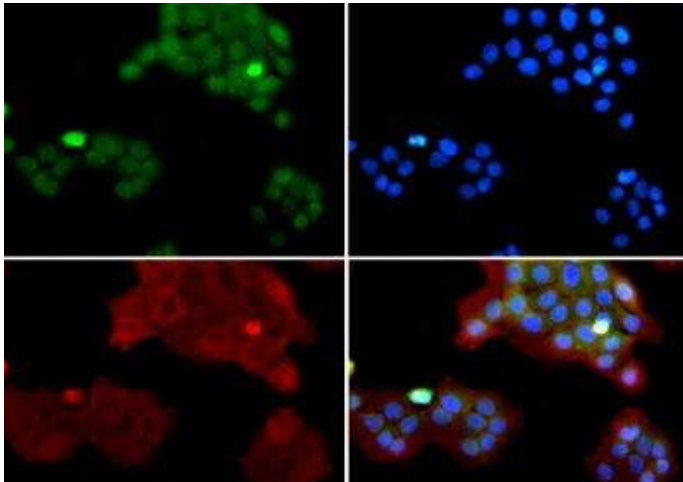
**Synonyms:** CGI-85; CGI85; SUV420H1

**Note:** This SUV420h1 antibody is useful for Immunocytochemistry/Immunofluorescence and IHC-paraffin embedded sections. In ICC/IF, nuclear staining was observed in A431 cells. In IHC-P, staining was observed in the nucleus of mouse epidermis tissue. Prior to immunostaining paraffin tissues, antigen retrieval with sodium citrate buffer (pH 6.0) is recommended. This antibody is not recommended for Western Blot.

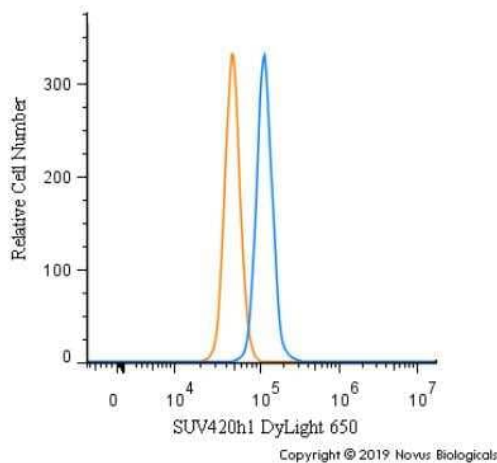
**Protein Families:** Druggable Genome

**Protein Pathways:** Lysine degradation

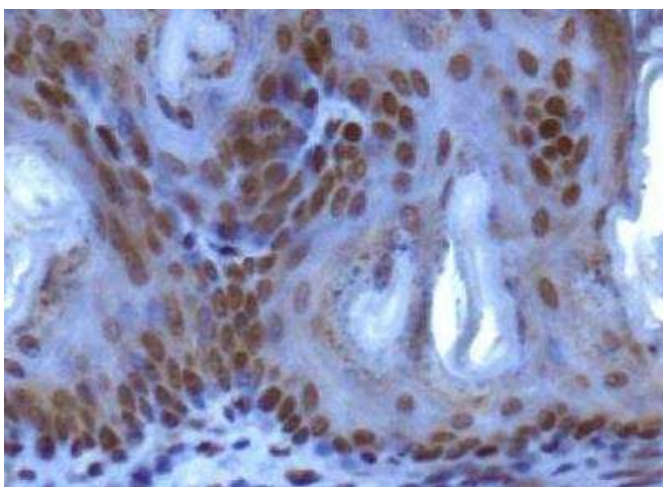
**Product images:**



Immunocytochemistry/Immunofluorescence: SUV420h1 Antibody TA336869 - SUV420h1 antibody was tested in A431 cells with FITC (green). Nuclei and alpha-tubulin were counterstained with DAPI (blue) and DyLight 550 (red).



Flow Cytometry: SUV420h1 Antibody TA336869 - An intracellular stain was performed on SK-MEL-28 cells with SUV420h1 Antibody [TA336869C] (blue) and a matched isotype control (orange). Cells were fixed with 4% PFA and then permeabilized with 0.1% saponin. Cells were incubated in an antibody dilution of 5 ug/mL for 30 minutes at room temperature. Both antibodies were conjugated to DyLight 650.



Immunohistochemistry: SUV420h1 Antibody TA336869 - IHC analysis of SUV420h1 in mouse epidermis using DAB with hematoxylin counterstain.