

Product datasheet for **TA336864**

GLP1R Rabbit Polyclonal Antibody

Product data:

Product Type:	Primary Antibodies
Applications:	Dot, ICC/IF, IHC, Simple Western, WB
Recommended Dilution:	Dot Blot, Knockdown Validated, Immunocytochemistry/ Immunofluorescence: 1:100, Western Blot: 1:1000, Simple Western: 1:100, Immunohistochemistry-Paraffin: 1:200 - 1:400, Immunohistochemistry: 1:200
Reactivity:	Human, Mouse
Host:	Rabbit
Clonality:	Polyclonal
Immunogen:	A synthetic peptide made to an internal portion of the human GLP1R protein (between residues 250-350) [UniProt P43220]
Formulation:	PBS with 30% Glycerol, 0.05% Sodium Azide. Store at 4C short term. Aliquot and store at -20C long term. Avoid freeze-thaw cycles.
Concentration:	lot specific
Purification:	Affinity purified
Conjugation:	Unconjugated
Storage:	Store at -20°C as received.
Stability:	Stable for 12 months from date of receipt.
Gene Name:	glucagon like peptide 1 receptor
Database Link:	NP_002053 Entrez Gene 14652 Mouse Entrez Gene 2740 Human P43220
Background:	GLP1R (Glucagon-like peptide 1 receptor) is an incretin hormone produced in the intestine that is released in response to food intake. GLP1R plays an important role in maintaining blood glucose homeostasis and has been suggested to affect the feelings of satiety or hunger, sensation of glucose levels and control of glucagon sensitivity of islets. In addition, desensitization of GLP1R on pancreatic beta-cells is one of the causes of non insulin-dependent diabetes mellitus (NIDDM), and GLP1R is starting to play an increasingly important role in endocrine gastrointestinal tumor management.



[View online »](#)

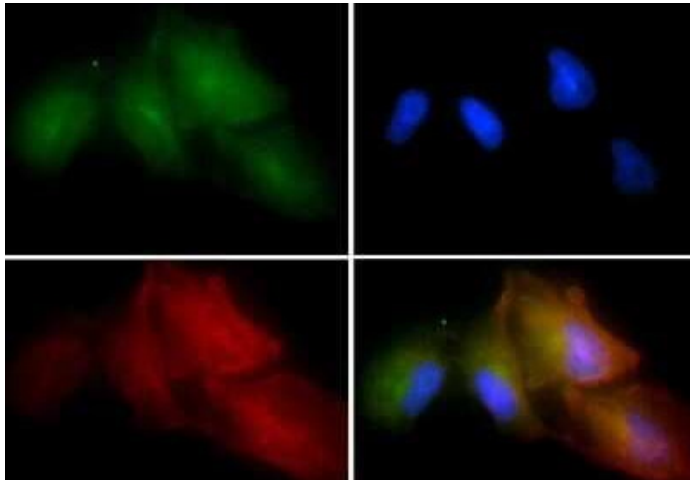
Synonyms: MGC138331

Note: This GLP1R antibody is useful for Western Blot, Immunocytochemistry/Immunofluorescence, and IHC-paraffin embedded sections. In Western Blot, a band is seen ~53kDa representing GLP1R. In ICC/IF, membrane staining was observed in HeLa cells. In IHC-P, strong membrane staining was observed in mouse pancreas tissue. Prior to immunostaining paraffin tissues, antigen retrieval with sodium citrate buffer (pH 6.0) is recommended.

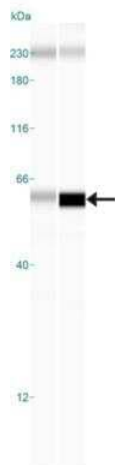
Protein Families: Druggable Genome, ES Cell Differentiation/IPS, GPCR, Transmembrane

Protein Pathways: Neuroactive ligand-receptor interaction

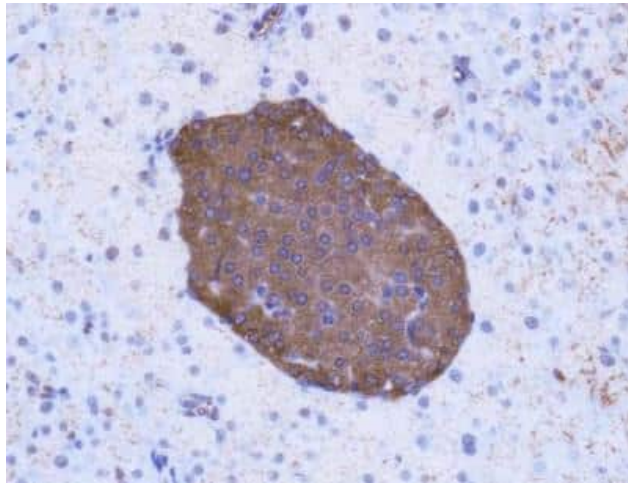
Product images:



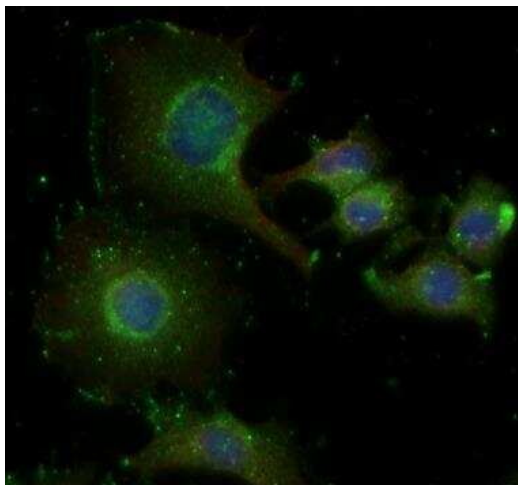
Immunocytochemistry/Immunofluorescence: GLP-1R Antibody TA336864 - GLP1R-1 antibody was tested in HeLa cells with FITC (green). Nuclei and alpha-tubulin were counterstained with DAPI (blue) and Dylight 550 (red).



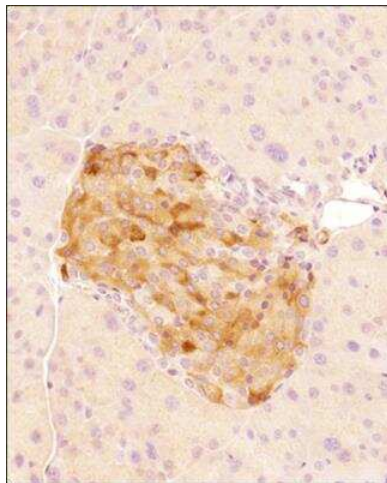
Simple Western: GLP-1R Antibody TA336864 - Simple Western lane view shows a specific band for GLP-1R in 0.5 mg/ml of Human Pancreas (left) and Mouse Pancreas (right) lysate. This experiment was performed under reducing conditions using the 12-230 kDa separation system. * Non-specific interaction with the 230 kDa Simple Western standard may be seen with this antibody



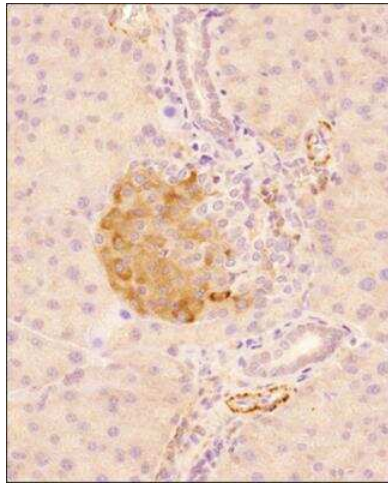
Immunohistochemistry: GLP-1R Antibody TA336864 - Analysis of GLP1R in mouse pancreas using DAB with hematoxylin counterstain.



Immunocytochemistry/Immunofluorescence: GLP-1R Antibody TA336864 - Neuro2a cells were fixed for 10 minutes using 10% formalin and then permeabilized for 5 minutes using 1X PBS + 0.05% Triton-X100. The cells were incubated with anti-GLP-1R at 5 ug/ml overnight at 4C and detected with an anti-rabbit Dylight 488 (Green) at a 1:500 dilution. Alpha tubulin (DM1A) NB100-690 was used as a co-stain at a 1:1000 dilution and detected with an anti-mouse Dylight 550 (Red) at a 1:500 dilution. Nuclei were counterstained with DAPI (Blue). Cells were imaged using a 40X objective.



Immunohistochemistry-Paraffin: GLP-1R Antibody TA336864 - Tissue section of mouse pancreas using 1:200 dilution of rabbit anti-GLP1R antibody. The staining was developed with HRP labeled anti-rabbit IgG secondary antibody and DAB reagent, and nuclei of cells were counter-stained with hematoxylin. This GLP1R antibody primarily generated a specific membrane cytoplasmic staining of apparently beta cells in the Islets of Langerhans.

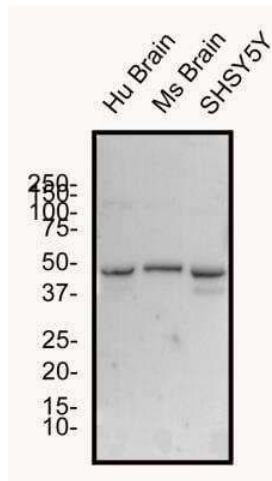


Immunohistochemistry-Paraffin: GLP-1R Antibody TA336864 - Tissue section of mouse pancreas using 1:200 dilution of rabbit anti-GLP1R antibody. The staining was developed with HRP labeled anti-rabbit IgG secondary antibody and DAB reagent, and nuclei of cells were counter-stained with hematoxylin. This GLP1R antibody primarily generated a specific membrane cytoplasmic staining of apparently beta cells in the Islets of Langerhans. The cells of lobular/inter-lobular ducts and the acinar cells were largely negative for GLP1R.

250>
150>
100>
75>
50>
37>
25>
20>
15>
10>



Western Blot: GLP-1R Antibody TA336864 - Analysis of GLP1R in human pancreas cell lysate.



Western Blot: GLP-1R Antibody TA336864 - Total protein from Human and Mouse brain and SHSY-5Y cells was separated on a 12% gel by SDS-PAGE, transferred to PVDF membrane and blocked in 5% non-fat milk in TBST. The membrane was probed with 2.0 ug/ml anti-GLP1R in 1% non-fat milk in TBST and detected with an anti-rabbit HRP secondary antibody using chemiluminescence.