

## Product datasheet for **TA336859**

### Alpha Fodrin (SPTAN1) Rabbit Polyclonal Antibody

#### Product data:

|                         |  |
|-------------------------|--|
| Product Type:           | Primary Antibodies   |
| Applications:           | IF, WB   |
| Recommended Dilution:   | WB: 1:5000-1:10000, IF: 1:500-1:1000   |
| Reactivity:             | Human, Mouse   |
| Host:                   | Rabbit   |
| Clonality:              | Polyclonal   |
| Immunogen:              | Recombinant construct containing the 7th, 8th and 9th spectrin repeats of human Alpha Fodrin (amino acids 676-1043). [UniProt# Q13813]   |
| Formulation:            | Store at 4C short term. Aliquot and store at -20C long term. Avoid freeze-thaw cycles.   |
| Concentration:          | lot specific   |
| Purification:           | Whole antisera   |
| Conjugation:            | Unconjugated   |
| Storage:                | Store at -20°C as received.  |
| Stability:              | Stable for 12 months from date of receipt.   |
| Predicted Protein Size: | 240 kDa  |
| Gene Name:              | spectrin alpha, non-erythrocytic 1   |
| Database Link:          | <a href="#">NP_001123910</a><br><a href="#">Entrez Gene 20740 Mouse</a> <a href="#">Entrez Gene 6709 Human</a><br><a href="#">Q13813</a> |



[View online »](#)

**Background:** Alpha Fodrin (SPTAN1; also called non-erythroid alpha spectrin) belongs to spectrin family of proteins which are widely distributed filamentous proteins implicated in generating a supporting/organizing scaffold for cell membranes, and SPTAN1 protein is involved in processes such as secretion, interactions with calmodulin in Ca<sup>2+</sup> dependent manner and Ca<sup>2+</sup> dependent cytoskeletal movements at the membranes. SPTAN1 interacts with several proteins including ACP1, CALM, EMD, TRPC4 etc. and forms a component of a complex that contains several other proteins such as ACTN4, CASK, IQGAP1, MAGI2, NPHS1 and SPTBN1. SPTAN1 cleavage accompanies apoptosis, induced by activation via CD3/TCR complex, Fas/CD95 ligation and other Fas-expressing cells or through cellular exposure to staurosporine, dexamethasone, synthetic ceramide etc. Major products of SPTAN1 cleavage are N-terminal/C-terminal fragments, and phosphorylation of Tyr-1176 has been shown to decrease its sensitivity to cleavage by calpain in vitro. Defects in SPTAN1 have been linked to EIEE5 (epileptic encephalopathy early infantile type 5).

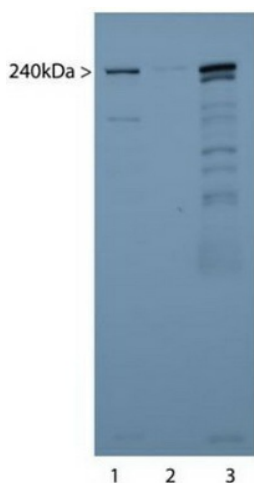
**Synonyms:** EIEE5; NEAS; SPTA2

**Note:** This Alpha Fodrin antibody is useful for Immunocytochemistry/Immunofluorescence and Western blot, where a band can be seen at approximately 240 kDa.

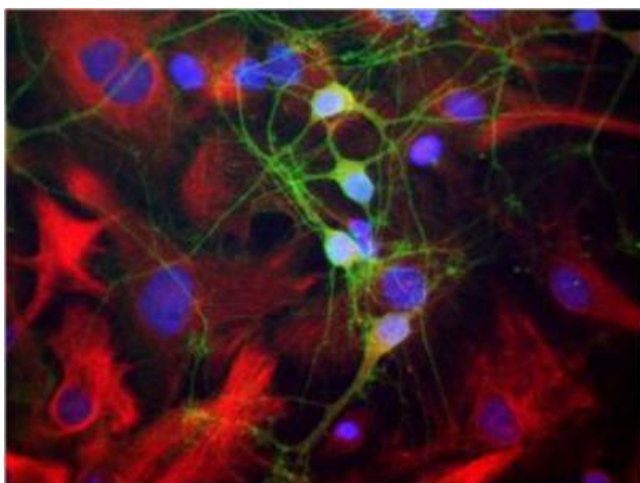
**Protein Families:** Druggable Genome

**Protein Pathways:** Tight junction

### Product images:



Western Blot: Alpha Fodrin Antibody TA336859 - Western blot of mouse sciatic nerve extract (lanes 1 and 2) and brain homogenate (3). A prominent band running at 240kDa represents the intact Alpha Fodrin heavy chain. More minor bands below this likely re



Immunocytochemistry/Immunofluorescence:  
Alpha Fodrin Antibody TA336859 - Mixed neuronal-glia cultures stained with rabbit antibody to Alpha Fodrin (TA336859, green) and mouse polyclonal antibody to Nestin (red). The Alpha Fodrin antibody stains numerous