

Product datasheet for **TA336851**

TMS1 (PYCARD) Rabbit Polyclonal Antibody

Product data:

Product Type:	Primary Antibodies
Applications:	ICC/IF, IHC, WB
Recommended Dilution:	Immunohistochemistry: 1:200, Immunocytochemistry/ Immunofluorescence: 1:40-1:100, Immunohistochemistry-Paraffin: 1:200, Western Blot (Negative)
Reactivity:	Human, Mouse
Host:	Rabbit
Clonality:	Polyclonal
Immunogen:	A synthetic peptide made to a C-terminal portion of the human ASC/TMS1 protein (between residues 145-195) [UniProt Q9ULZ3]
Formulation:	PBS with 30% Glycerol, 0.05% Sodium Azide. Store at 4C short term. Aliquot and store at -20C long term. Avoid freeze-thaw cycles.
Concentration:	lot specific
Purification:	Affinity purified
Conjugation:	Unconjugated
Storage:	Store at -20°C as received.
Stability:	Stable for 12 months from date of receipt.
Gene Name:	PYD and CARD domain containing
Database Link:	NP_037390 Entrez Gene 66824 Mouse Entrez Gene 29108 Human Q9ULZ3
Background:	Target of methylation-induced silencing 1 protein, TMS1 (ASC, Pycard) is a 21 kDa cytoplasmic adaptor protein containing 2 protein-protein interaction domains: an N-terminal PYRIN-PAAD-DAPIN domain (PYD) and a C-terminal caspase-recruitment domain (CARD). Both domains are members of the six-helix bundle death domain superfamily. These domains, via caspase activation, mediate the assembly of large signaling complexes that are involved in the apoptotic and inflammatory signaling pathways. During apoptosis TMS1 aggregates near the nuclear periphery as ball-like structures. Recent research suggests that it can modulate MAPK expression by suppressing the DUSP10/MKP5 phosphatase thus allowing the phosphorylation of MAPK by pathogens and toll-like receptor agonists. PMID: 2148701.



[View online »](#)

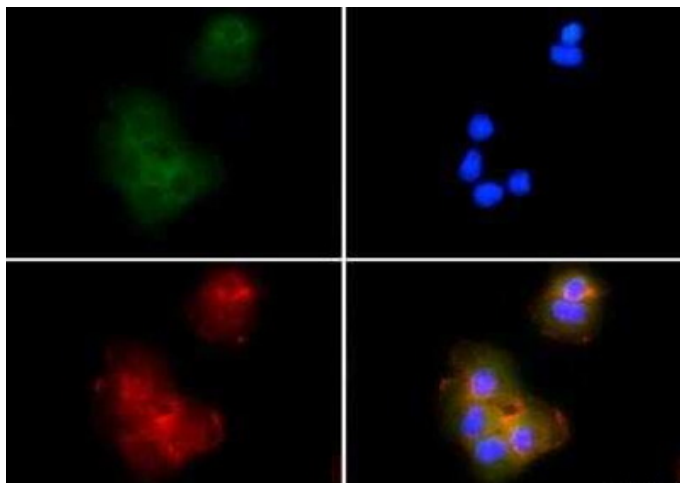
Synonyms: ASC; CARD5; TMS; TMS-1; TMS1

Note: This ASC/TMS1 antibody is useful for Immunocytochemistry/Immunofluorescence and IHC-paraffin embedded sections. Prior to immunostaining paraffin tissues, antigen retrieval with sodium citrate buffer (pH 6.0) is recommended. This antibody is not recommended for Western Blot.

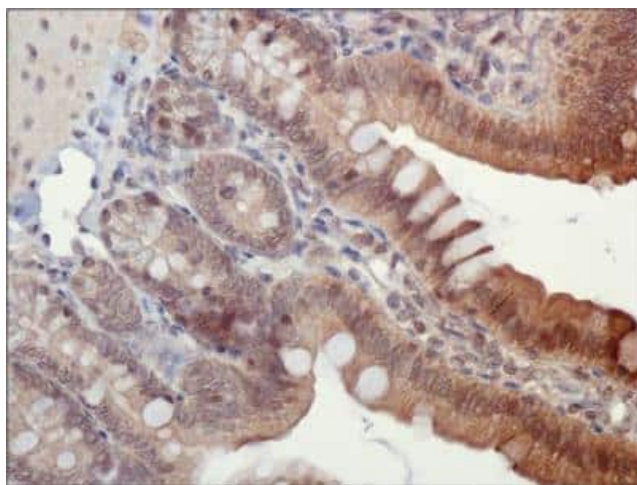
Protein Families: Druggable Genome

Protein Pathways: Cytosolic DNA-sensing pathway, NOD-like receptor signaling pathway

Product images:



Immunocytochemistry/Immunofluorescence: ASC/TMS1 Antibody TA336851 - Tested in A431 cells with FITC (green). Nuclei and alpha-tubulin were counterstained with DAPI (blue) and DyLight 550 (red).



Immunohistochemistry: ASC/TMS1 Antibody TA336851 - Analysis of ASC/TMS1 in mouse intestine using DAB with hematoxylin counterstain.