

Product datasheet for **TA336847**

CHORDC1 Rabbit Polyclonal Antibody

Product data:

Product Type:	Primary Antibodies
Applications:	ICC/IF, IHC, WB
Recommended Dilution:	Immunohistochemistry: 1:150, Immunocytochemistry/ Immunofluorescence: 1:100-1:400, Western Blot: 1:2500, Immunohistochemistry-Paraffin: 1:150
Reactivity:	Human, Mouse
Host:	Rabbit
Clonality:	Polyclonal
Immunogen:	A synthetic peptide made to an internal portion of the human CHORDC1 protein (between residues 100-250) [UniProt Q9UHD1]
Formulation:	PBS with 30% Glycerol, 0.05% Sodium Azide. Store at 4C short term. Aliquot and store at -20C long term. Avoid freeze-thaw cycles.
Concentration:	lot specific
Purification:	Affinity purified
Conjugation:	Unconjugated
Storage:	Store at -20°C as received.
Stability:	Stable for 12 months from date of receipt.
Gene Name:	cysteine and histidine rich domain containing 1
Database Link:	NP_001137545 Entrez Gene 66917 Mouse Entrez Gene 26973 Human Q9UHD1

Background: Cysteine and histidine-rich domain containing 1 (CHORDC1; CHP1) is a member of a novel family of highly conserved proteins. These proteins are factors in plant disease resistance, as well as animal development. Mammalian Chp-1 is a novel Hsp90-interacting protein that contains two CHORD domains and one CS domain. CHP-1 binds to the ATPase domain of Hsp90, but this interaction does not utilize ATP and ATPase- coupled conformational change of Hsp90 (PMID: 15642353). High ADP:ATP ratios in cell lysates appears to promote the interaction between CHP1 and Hsp90 (PMID: 19875381). Additionally, CHP-1 has been shown to be 63% homologous to Melusin; a muscle specific protein necessary for heart hypertrophy caused by mechanical burden (PMID12965203).

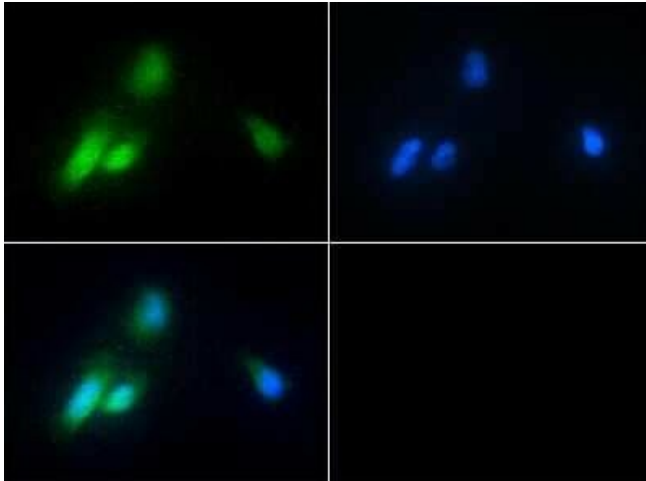


[View online »](#)

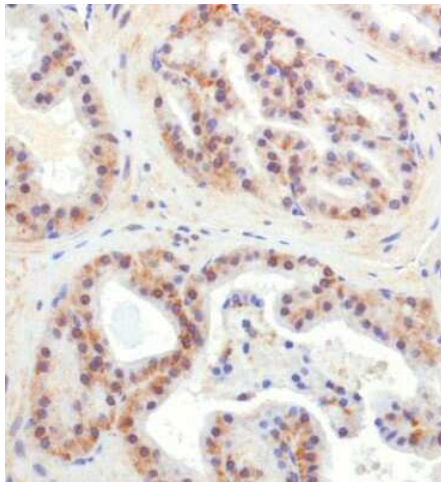
Synonyms: CHP1

Note: This CHORDC1 antibody is useful for Western Blot where a band is observed ~37kDa, Immunocytochemistry/Immunofluorescence, and IHC-paraffin embedded sections. Prior to immunostaining paraffin tissues, antigen retrieval with sodium citrate buffer (pH 6.0) is recommended.

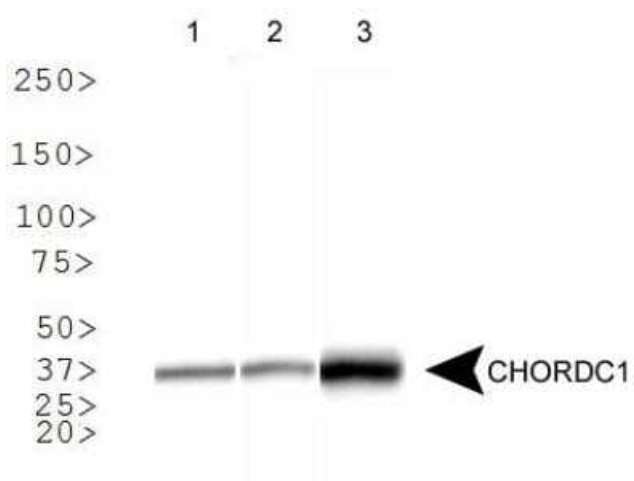
Product images:



Immunocytochemistry/Immunofluorescence: CHORDC1 Antibody TA336847 - Antibody was tested in HeLa cells with FITC (green). Nuclei were counterstained with DAPI (blue).



Immunohistochemistry: CHORDC1 Antibody TA336847 - Analysis of CHORDC1 in mouse prostate using DAB with hematoxylin counterstain.



Western Blot: CHORDC1 Antibody TA336847 - Analysis of CHORDC1 in 1. human brain, 2. human heart and 3. mouse liver.