

Product datasheet for **TA336843**

HSP90AA1 Rabbit Polyclonal Antibody

Product data:

Product Type:	Primary Antibodies
Applications:	ICC/IF, IHC, Simple Western, WB
Recommended Dilution:	Western Blot: 2 ug/mL, Simple Western: 1:500, Immunohistochemistry: 1:200, Immunocytochemistry/ Immunofluorescence: 1:100, Immunohistochemistry-Paraffin: 1:200
Reactivity:	Human, Mouse, Rat, Primate
Host:	Rabbit
Clonality:	Polyclonal
Immunogen:	A synthetic peptide made to a C-terminal portion of the human Hsp90A protein (between residues 650-732) [UniProt P07900]
Formulation:	PBS, 0.05% Sodium Azide. Store at 4C short term. Aliquot and store at -20C long term. Avoid freeze-thaw cycles.
Concentration:	lot specific
Purification:	Immunogen affinity purified
Conjugation:	Unconjugated
Storage:	Store at -20°C as received.
Stability:	Stable for 12 months from date of receipt.
Gene Name:	heat shock protein 90kDa alpha family class A member 1
Database Link:	NP_001017963 Entrez Gene 15519 Mouse Entrez Gene 299331 Rat Entrez Gene 3320 Human P07900
Background:	Heat shock protein 90-1a (HSP90-1a) is a myosin chaperone involved in heat shock responses, as well as in myofibrillogenesis. It is known to interact with histone methyltransferases, influencing epigenetic changes in certain pathways. It interacts with TERT to assemble the telomerase holoenzyme complex, which is critical for addition of DNA to telomeric ends. It also is important in thick and thin filament organization, influencing the formation and maintenance of sarcomere characteristics. It is highly expressed in skeletal and cardiac muscles.



[View online »](#)

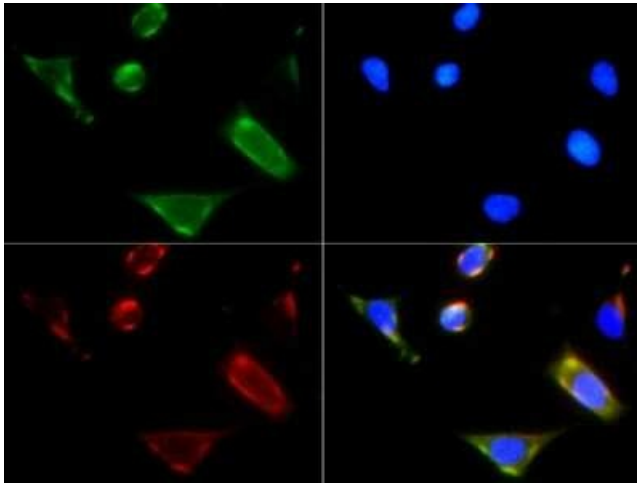
Synonyms: EL52; HSP86; Hsp89; HSP89A; Hsp90; HSP90A; HSP90N; HSPC1; HSPCA; HSPCAL1; HSPCAL4; HSPN; LAP-2; LAP2

Note: This HSP90-1A antibody is useful for Immunocytochemistry/Immunofluorescence, IHC-paraffin embedded sections and Western blot where a band is seen ~84 kDa. Prior to immunostaining paraffin tissues, antigen retrieval with sodium citrate buffer (pH 6.0) is recommended.

Protein Families: Druggable Genome

Protein Pathways: Antigen processing and presentation, NOD-like receptor signaling pathway, Pathways in cancer, Progesterone-mediated oocyte maturation, Prostate cancer

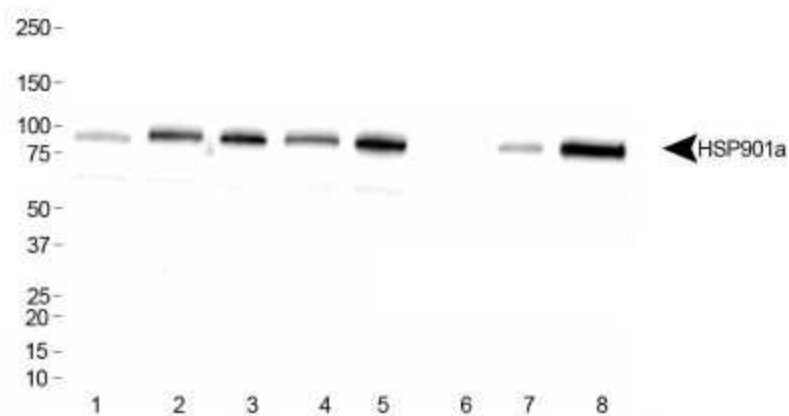
Product images:



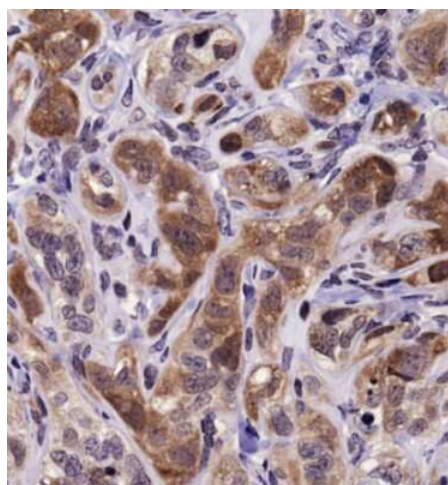
Immunocytochemistry/Immunofluorescence: HSP90 alpha Antibody TA336843 - HSP901a antibody was tested in MCF-7 cells with FITC (green). Nuclei and actin were counterstained with DAPI (blue) and Phalloidin (red).



Simple Western: HSP90 alpha Antibody TA336843 - Image shows a specific band for Hsp90A in 0.5 mg/mL of HepG2 lysate. This experiment was performed under reducing conditions using the 12-230 kDa separation system.



Western Blot: HSP90 alpha Antibody TA336843 - Analysis of HSP901a in 1: HeLa. 2: Ntera2. 3: A431. 4: HepG2. 5: MCF7. 6: NIH/3T3. 7: PC12. 8: COS7.



Immunohistochemistry: HSP90 alpha Antibody TA336843 - Staining of human kidney carcinoma in HSP901A using DAB with hematoxylin counterstain.