

## Product datasheet for **TA336839**

### **HSP90AB1 Rabbit Polyclonal Antibody**

#### **Product data:**

<b>Product Type:</b>	Primary Antibodies
<b>Applications:</b>	ICC/IF, IHC, Simple Western, WB
<b>Recommended Dilution:</b>	Knockdown Validated, Simple Western: 1:1000, Immunohistochemistry: 1:200, Immunocytochemistry/ Immunofluorescence: 1:100, Western Blot: 1 ug/ml, Immunohistochemistry-Paraffin: 1:200
<b>Reactivity:</b>	Human, Mouse, Rat, Primate
<b>Host:</b>	Rabbit
<b>Clonality:</b>	Polyclonal
<b>Immunogen:</b>	A synthetic peptide made to a C-terminal portion of the human Hsp90B protein (between residues 650-724) [UniProt P08238]
<b>Formulation:</b>	PBS, 0.05% Sodium Azide. Store at 4C short term. Aliquot and store at -20C long term. Avoid freeze-thaw cycles.
<b>Concentration:</b>	lot specific
<b>Purification:</b>	Immunogen affinity purified
<b>Conjugation:</b>	Unconjugated
<b>Storage:</b>	Store at -20°C as received.
<b>Stability:</b>	Stable for 12 months from date of receipt.
<b>Gene Name:</b>	heat shock protein 90kDa alpha family class B member 1
<b>Database Link:</b>	<a href="#">NP_031381</a> <a href="#">Entrez Gene 15516 Mouse</a> <a href="#">Entrez Gene 301252 Rat</a> <a href="#">Entrez Gene 3326 Human</a> <a href="#">P08238</a>



[View online »](#)

**Background:** HSP90AB1 heat shock protein 90kDa alpha (cytosolic), class B member 1 (HSP90AB1), also known as HSPC2, HSPCB and HSP90B, is a chaperone that plays an integral part in signal transduction, protein folding and degradation, cell cycle regulation, and protein maturation. Specifically, HSP90AB1 is a highly conserved chaperone which interacts with other cochaperones to assist in either the folding or refolding of proteins. HSP90AB1 is a constitutive form of the two major HSP90 proteins and is found primarily in the cytosol along with the inducible form, HSP90AA1. HSP90B is a target molecule for treatment of Helicobacter pylori (H. pylori)-induced gastric injury due to an interaction of HSP90B1 with Rac1 ultimately leading to increased production in reactive oxygen species (ROS) in gastric epithelial cells (PMID: 20451655). HSP90B in conjunction with HSP70 also plays a role in HIF-1alpha stability via ubiquitin and O(2)-independent regulation (PMID: 19802386). HSP90 antibodies are useful tools for studying cancer or other diseases brought on by cellular stress.

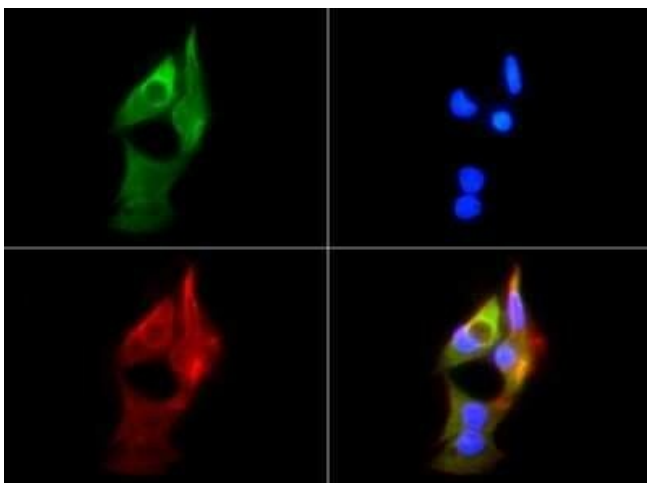
**Synonyms:** D6S182; HSP84; HSP90B; HSPC2; HSPCB

**Note:** This HSP90-1B antibody is useful for Immunocytochemistry/Immunofluorescence, IHC-paraffin embedded sections, and Western blot where a band is seen ~83 kDa. Prior to immunostaining paraffin tissues, antigen retrieval with sodium citrate buffer (pH 6.0) is recommended.

**Protein Families:** Druggable Genome, Stem cell - Pluripotency

**Protein Pathways:** Antigen processing and presentation, NOD-like receptor signaling pathway, Pathways in cancer, Progesterone-mediated oocyte maturation, Prostate cancer

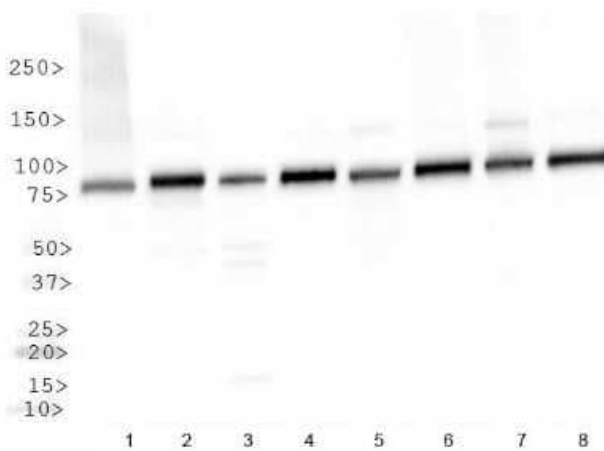
### Product images:



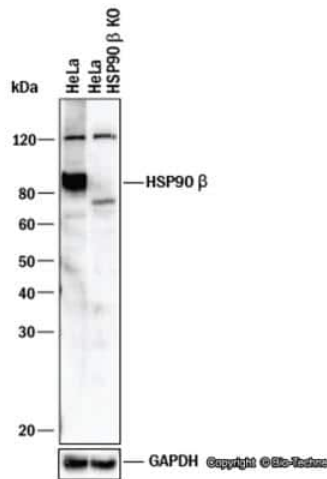
Immunocytochemistry/Immunofluorescence: HSP90 beta Antibody TA336839 - HSP90-1B antibody was tested in HepG2 cells with FITC (green). Nuclei and actin were counterstained with Dapi (blue) and Phalloidin (red).



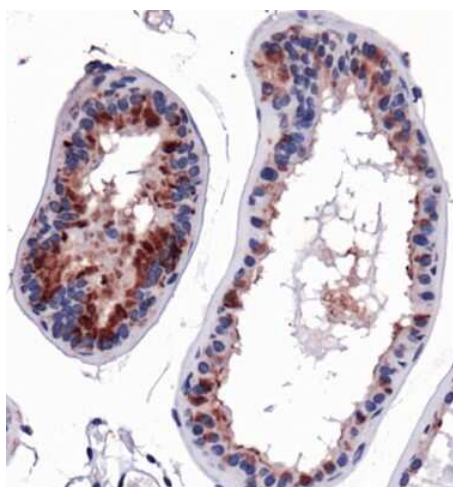
Simple Western: HSP90 beta Antibody TA336839 - Simple Western lane view shows a specific band for Hsp90B in 0.5 mg/ml of HepG2 lysate. This experiment was performed under reducing conditions using the 12-230 kDa separation system.



Western Blot: HSP90 beta Antibody TA336839 - Analysis of HSP901b in: 1. HeLa, 2. Ntera 2, 3. A431, 4. HepG2, 5. MCF7, 6. NIH/3T3, 7. PC12 and 8. COS7.



Knockdown Validated: HSP90 beta Antibody TA336839 - Western blot shows lysates of HeLa human cervical epithelial carcinoma parental cell line and HSP90 beta knockout (KO) HeLa cell line. PVDF membrane was probed with 1 ug/ml of Rabbit Anti-Human HSP90 beta Polyclonal Antibody (Catalog # TA336839) followed by HRP-conjugated Anti-Rabbit IgG Secondary Antibody (Catalog #HAF008). Specific band was detected for HSP90 beta at approximately 95 kDa (as indicated) in the parental HeLa cell line, but is not detectable in the knockout HeLa cell line. This experiment was conducted under reducing conditions.



Immunohistochemistry: HSP90 beta Antibody TA336839 - Staining of HSP901b in mouse prostate using DAB with hematoxylin counterstain.