

## Product datasheet for **TA336835**

### Tryptophan 5 hydroxylase 2 (TPH2) Rabbit Polyclonal Antibody

#### Product data:

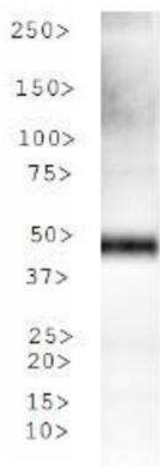
Product Type:	Primary Antibodies
Applications:	WB
Recommended Dilution:	Western Blot: 2 ug/ml
Reactivity:	Human
Host:	Rabbit
Clonality:	Polyclonal
Immunogen:	A synthetic peptide made to an N-terminal portion of the human Tryptophan hydroxylase 2 protein (between residues 1-100) [UniProt Q8IWU9]
Formulation:	PBS, 0.05% Sodium Azide. Store at 4C short term. Aliquot and store at -20C long term. Avoid freeze-thaw cycles.
Concentration:	lot specific
Purification:	Immunogen affinity purified
Conjugation:	Unconjugated
Storage:	Store at -20°C as received.
Stability:	Stable for 12 months from date of receipt.
Gene Name:	tryptophan hydroxylase 2
Database Link:	<a href="#">NP_775489</a> <a href="#">Entrez Gene 121278 Human Q8IWU9</a>
Background:	TPH2 is a protein of the pterin dependent aromatic acid hydroxylase family. It catalyzes the first and rate limiting step in the biosynthesis of serotonin, an important hormone and neurotransmitter. TPH2 is expressed predominantly in the central nervous system. Mutations in TPH2 gene may be associated with psychiatric diseases such as bipolar affective disorder and major depression.
Synonyms:	ADHD7; NTPH
Note:	This Tryptophan hydroxylase 2 antibody is useful in Western blot, where a band is seen ~50 kDa.
Protein Families:	Druggable Genome



[View online »](#)

Protein Pathways: Metabolic pathways, Tryptophan metabolism

### Product images:



Western Blot: Tryptophan hydroxylase 2  
Antibody TA336835 - Analysis of TPH2 in human  
stomach lysate.