

Product datasheet for **TA336831**

Collagen I (COL1A1) Rabbit Polyclonal Antibody

Product data:

Product Type:	Primary Antibodies
Applications:	ICC/IF, IHC, WB
Recommended Dilution:	Western Blot (Negative), Immunohistochemistry-Paraffin: 1:200, Immunohistochemistry: 1:200, Immunocytochemistry/ Immunofluorescence: 10 - 20 ug/mL
Reactivity:	Human, Mouse
Host:	Rabbit
Clonality:	Polyclonal
Immunogen:	A synthetic peptide made to the C-terminal portion of the human Collagen I protein (between residues 1300-1350) [UniProt P02452]
Formulation:	PBS, 0.05% Sodium Azide. Store at 4C short term. Aliquot and store at -20C long term. Avoid freeze-thaw cycles.
Concentration:	lot specific
Purification:	Immunogen affinity purified
Conjugation:	Unconjugated
Storage:	Store at -20°C as received.
Stability:	Stable for 12 months from date of receipt.
Gene Name:	collagen type I alpha 1
Database Link:	NP_000079 Entrez Gene 12842 Mouse Entrez Gene 1277 Human P02452
Background:	Collagen-1 (also known as collagen alpha, COL1A1, and alpha-1 type I collagen) is the largest component of fibrillar collagen found in cartilage and connective tissues, and synthesizes by fibroblasts, osteoblasts, and odontoblasts. Trimers are formed by combing two alpha one chains and one alpha 2 chain. Mutations of the gene are found in Ehlers-Danlos syndrome, as well as osteogenesis imperfecta. Over 50 mutations have been found in these diseases, including deletions, insertions, splice variants, and substitutions.
Synonyms:	EDSC; OI1; OI2; OI3; OI4
Note:	This Collagen 1 antibody is useful for IHC-paraffin embedded sections.

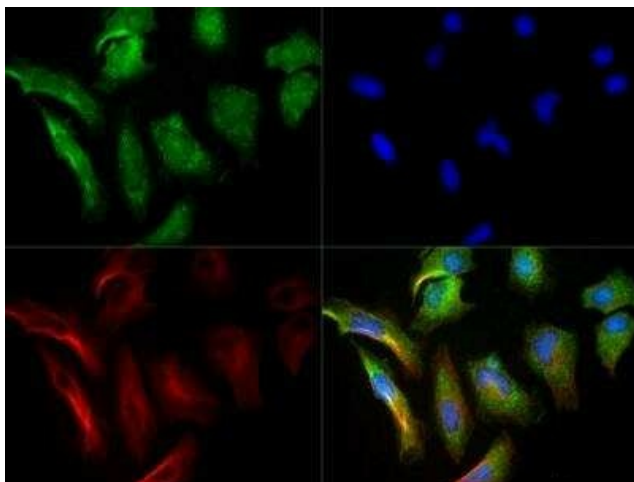


[View online »](#)

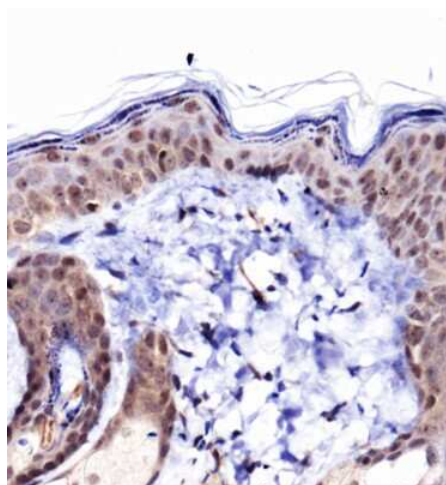
Protein Families: Druggable Genome

Protein Pathways: ECM-receptor interaction, Focal adhesion

Product images:



Immunocytochemistry/Immunofluorescence: Collagen I alpha 1 Antibody TA336831 - Collagen 1 antibody was tested in HeLa cells with DyLight 488 (green). Nuclei and alpha-tubulin were counterstained with DAPI (blue) and Dylight 550 (red).



Immunohistochemistry: Collagen I alpha 1 Antibody TA336831 - Analysis of Collagen 1 in mouse epidermis using DAB with hematoxylin counterstain.