

## Product datasheet for **TA336829**

### HSP70-1A (HSPA1A) Rabbit Polyclonal Antibody

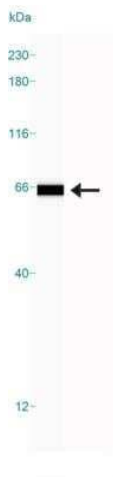
#### Product data:

Product Type:	Primary Antibodies
Applications:	Block/Neutralize, Electron Microscopy, FC, IHC, Simple Western, WB
Recommended Dilution:	Block/Neutralize, Flow Cytometry, Electron Microscopy, Western Blot: 1:1000, Immunohistochemistry-Paraffin: 1:400, Simple Western: 1:50, Immunohistochemistry: 1:400
Reactivity:	Human
Host:	Rabbit
Clonality:	Polyclonal
Immunogen:	A synthetic peptide made to a C-terminus portion of the human Hsp70 protein (between residues 600-641) [UniProt P08107]
Formulation:	PBS, 0.05% Sodium Azide. Store at 4C short term. Aliquot and store at -20C long term. Avoid freeze-thaw cycles.
Concentration:	lot specific
Purification:	Immunogen affinity purified
Conjugation:	Unconjugated
Storage:	Store at -20°C as received.
Stability:	Stable for 12 months from date of receipt.
Gene Name:	heat shock protein family A (Hsp70) member 1A
Database Link:	<a href="#">NP_005336</a> <a href="#">Entrez Gene 3303 Human</a> <a href="#">P0DMV8</a>
Synonyms:	HEL-S-103; HSP70-1; HSP70-1A; HSP70.1; HSP70I; HSP72; HSPA1
Note:	This Hsp70 antibody is useful for Western blot and IHC-paraffin embedded sections.
Protein Pathways:	Antigen processing and presentation, Endocytosis, MAPK signaling pathway, Prion diseases, Spliceosome

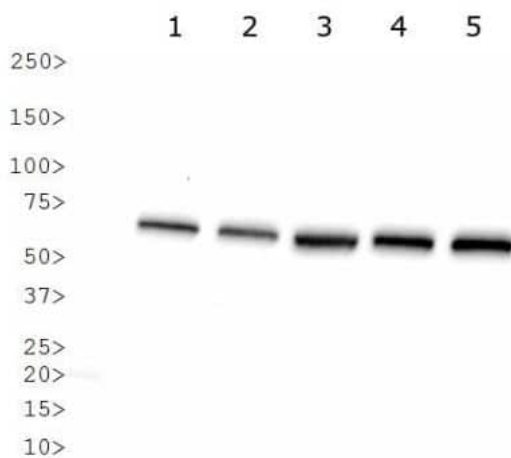


[View online »](#)

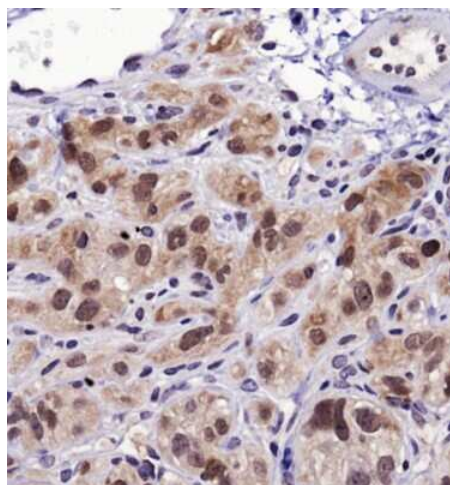
Product images:



Simple Western: HSP70/HSPA1A Antibody TA336829 - Lane view shows a specific band for Hsp70 in 1.0 mg/ml of HeLa lysate. This experiment was performed under reducing conditions using the 12-230kDa separation system.



Western Blot: HSP70/HSPA1A Antibody TA336829 - Analysis of HSP70 in (1) human brain, (2) human liver, (3) human testes, (4) human skeletal muscle, and (5) human heart.



Immunohistochemistry: HSP70/HSPA1A Antibody TA336829 - Analysis of Hsp70 in human xenograft kidney cancer using DAB with hematoxylin counterstain.