

## Product datasheet for **TA336828**

### HSP70-1A (HSPA1A) Rabbit Polyclonal Antibody

#### Product data:

Product Type:	Primary Antibodies
Applications:	FC, ICC/IF, IHC, Simple Western
Recommended Dilution:	Flow Cytometry: 1 : 200, Immunocytochemistry/ Immunofluorescence: 1:25, Immunohistochemistry: 1:400, Immunohistochemistry-Paraffin: 1:400, Simple Western: 1:50, Immunohistochemistry-Frozen
Reactivity:	Human, Mouse
Host:	Rabbit
Clonality:	Polyclonal
Immunogen:	A synthetic peptide made to an internal portion of the human Hsp70 protein (between residues 550-600) [UniProt P08107]
Formulation:	PBS, 0.05% Sodium Azide. Store at 4C short term. Aliquot and store at -20C long term. Avoid freeze-thaw cycles.
Concentration:	lot specific
Purification:	Immunogen affinity purified
Conjugation:	Unconjugated
Storage:	Store at -20°C as received.
Stability:	Stable for 12 months from date of receipt.
Gene Name:	heat shock protein family A (Hsp70) member 1A
Database Link:	<a href="#">NP_005336</a> <a href="#">Entrez Gene 193740 Mouse</a> <a href="#">Entrez Gene 3303 Human</a> <a href="#">P0DMV8</a>
Background:	Heat shock protein 70 1A/1B (also known as HSP70, HSPA1A, HSPA1B, HSP70 1/2) is a chaperone protein which can stabilize proteins against aggregation and assist in protein folding. It has been shown to play a role in aging, viral replication, lupus, and tumor progression. Accordingly, HSP70 has been used in anti-tumor vaccines, as well as HIV and Parkinson's research.
Synonyms:	HEL-S-103; HSP70-1; HSP70-1A; HSP70.1; HSP70I; HSP72; HSPA1

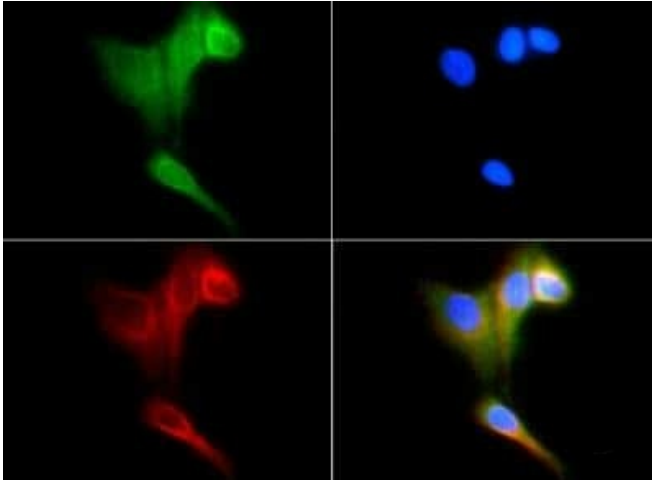


[View online »](#)

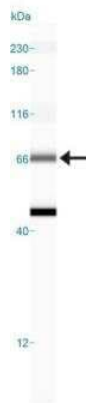
**Note:** This Hsp70 antibody is useful for Immunocytochemistry/Immunofluorescence and IHC-paraffin embedded sections.

**Protein Pathways:** Antigen processing and presentation, Endocytosis, MAPK signaling pathway, Prion diseases, Spliceosome

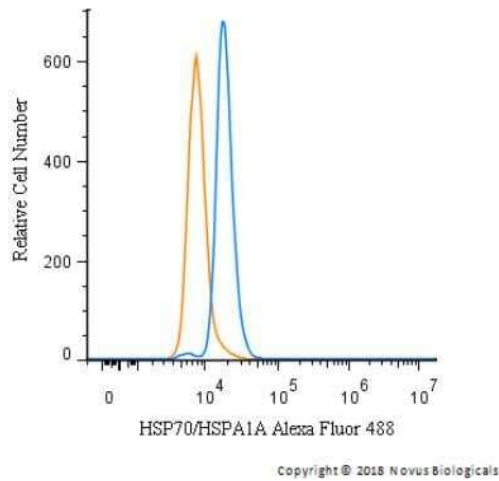
**Product images:**



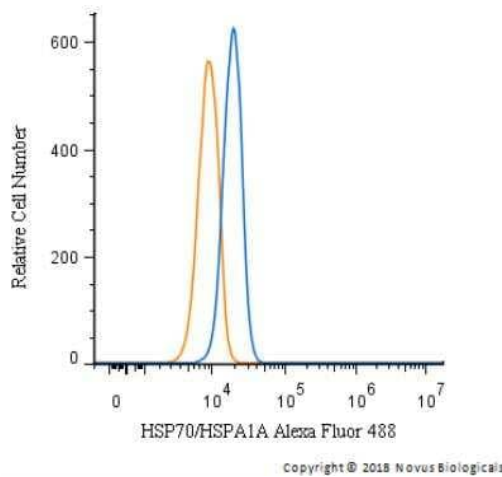
Immunocytochemistry/Immunofluorescence: HSP70/HSPA1A Antibody TA336828 - HSP70 antibody was tested at 1:25 in HeLa cells with FITC (green). Nuclei were counterstained with DAPI (blue).



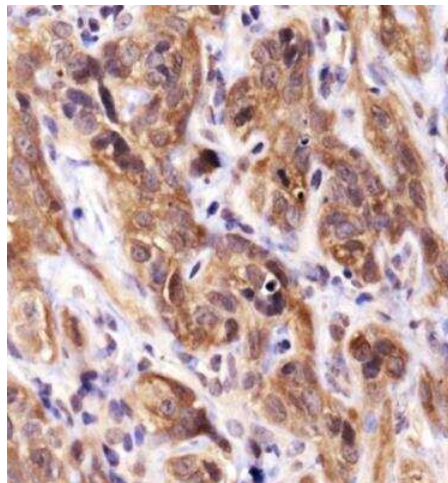
Simple Western: HSP70/HSPA1A Antibody TA336828 - Lane view shows a specific band for Hsp70 in 1.0 mg/ml of HeLa lysate. This experiment was performed under reducing conditions using the 12-230 kDa separation system.



Flow Cytometry: HSP70/HSPA1A Antibody TA336828 - An intracellular stain was performed on A549 cells with HSP70/HSPA1A Antibody TA336828AF488 (blue) and a matched isotype control (orange). Cells were fixed with 4% PFA and then permeablized with 0.1% saponin. Cells were incubated in an antibody dilution of 10 ug/mL for 30 minutes at room temperature. Both antibodies were conjugated to Alexa Fluor 488.



Flow Cytometry: HSP70/HSPA1A Antibody TA336828 - An intracellular stain was performed on Jurkat cells with HSP70/HSPA1A Antibody TA336828AF488 (blue) and a matched isotype control (orange). Cells were fixed with 4% PFA and then permeablized with 0.1% saponin. Cells were incubated in an antibody dilution of 10 ug/mL for 30 minutes at room temperature. Both antibodies were conjugated to Alexa Fluor 488.



Immunohistochemistry: HSP70/HSPA1A Antibody TA336828 - Analysis of Hsp70 in human xenograft kidney cancer using DAB with hematoxylin counterstain.